

Seed Handling with Belt Systems



The most gentle seed delivery system on the market today.



Preserve seed quality!
Protect your seed investment from damage
caused by augers and pneumatic systems.

Bulk Seed Delivery System Seed Tenders

- 240 or 160 Bushel total capacity
- 2 Compartment versatility
- 8" Belt in a 6" tube
- Conveyor pivots a full 180°



240 Bulk Seed Delivery with 3-Axle Chassis

**Telescoping Conveyor Option
available on both 160 and 240**

Patent Pending

Standard Features

- 6" Tube with an 8" crescent top PVC belt.
- 3-Piece 12' telescoping downspout on all units.
- 180° Pivot range.
- Can easily be mounted on your truck, trailer or optional chassis.
- Individual compartment control.
- Each compartment has level view windows.
- **100% cleanout (no cross contamination).**
- ACI Roll Tarp.

Options

- 12-Volt electric or gas power drives available.
- Chassis with electric brakes.
- Tri-axle trailer chassis for 240 bushel capacity.
- 1 hp 12-volt DC motor with controls.
- 5½ hp Honda® with wireless control.
- Central Fill Kit.
- Digital scale.
- Dry inoculators available.
- Liquid inoculators available.

The most versatile seed delivery system on the market today that incorporates the most preferred method for bulk seed handling.

All of these advantages allow for the filling of a planter with one stop, using the unique optional telescoping belt conveyor.

Features an ACI Roll Tarp so you don't have to climb onto the tender to open and close heavy metal covers.



Electric Indexer is standard equipment. Locks the fill tube in position during operation.

**100%
Cleanout**

**No Cross Contamination
as opposed to
augers and
cleated belts!**

Fill a 40' Planter with One Stop



Optional telescoping belt conveyor extends from 14' to 22'*



Full 180° pivot range for easy filling and transport*



Compact design for easy towing and storage*

*Shown without wind guards

Standard 160 Bulk Seed Delivery System with optional 2-axle chassis*



ACI Roll Tarp



12-Volt liquid seed inoculator



Easy access foldup ladder



Scales available

Preserve Seed Quality

2-Box Totes

Now available with optional telescoping conveyors

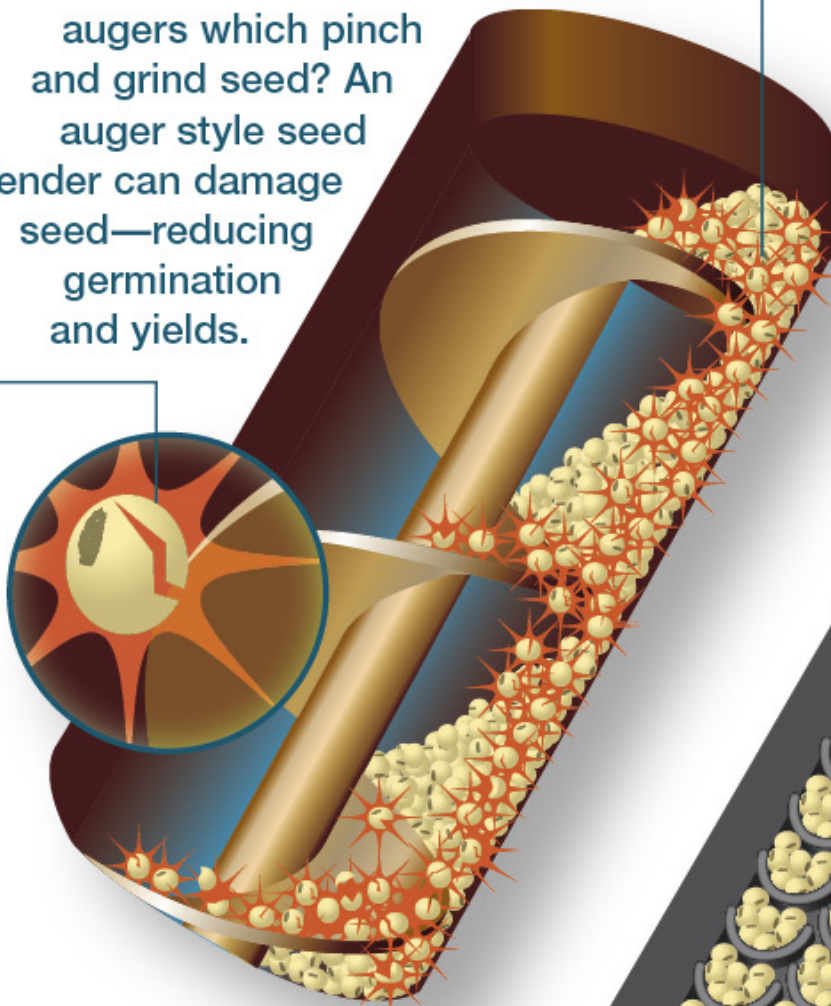
Patent Pending

Maximum Discharge Height Information*

Model	Standard Tube	Telescope Tube Extended	Trailer Height
2-Box Tote on Trailer	9' 5"	11' 7"	20"
160 Seed Tender on Trailer	10' 3"	12' 5"	27"
240 Seed Tender on Trailer	9' 8"	12'	22"
330/411 Seed Tender on Trailer	13' 5" Honey Comb 9' 8" Standard Belt	12'	21"

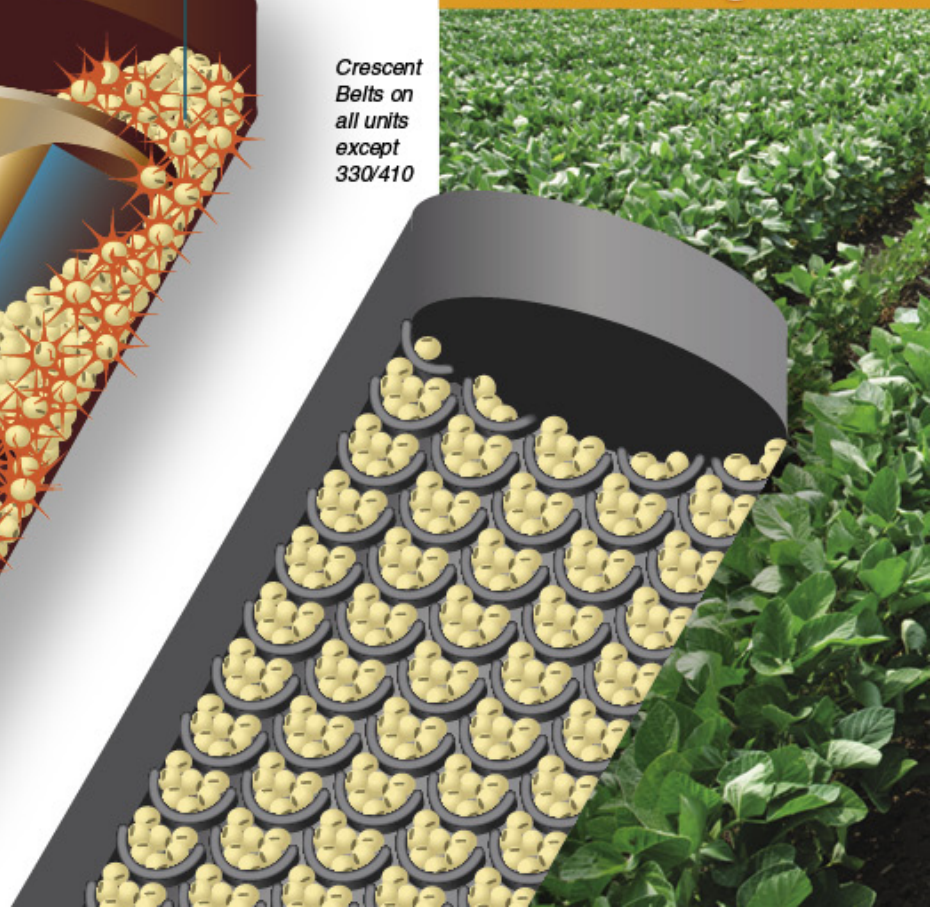
*Scales add 4", 2' Extension adds 11", 4' Extension adds 22"

How much seed is damaged from tenders that use augers which pinch and grind seed? An auger style seed tender can damage seed—reducing germination and yields.



Our belts are gentle with

Crescent Belts on all units except 330/410



We Only Use Belt Conveyors



Loads from rear

Easy access to seed box gates and sliding bar hold downs

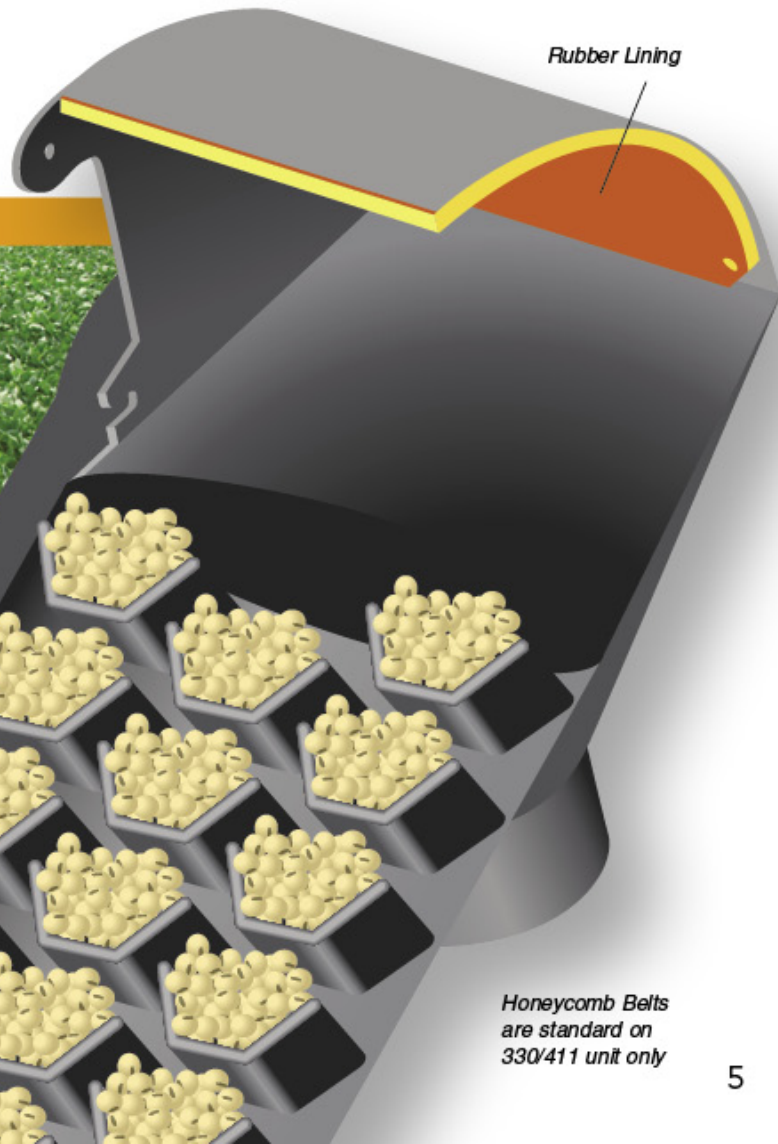


Gentle seed flow. Adjustable stainless steel shut-off



Easy transport

- **Rubber-lined spouts eliminate seed damage.**
- **Belt speeds set to eliminate impact damage.**



Rubber Lining

Honeycomb Belts are standard on 330/411 unit only

your seed!



Seed Box Totes

New 4-Box Seed Tote



Shuttle allows for remote quick changes of seed boxes



Lock downs allow for quick release and lock down of boxes

Remote control of belt, gate, telescopic tube, box rotation and shuttle from one device



The Most Preferred Bulk Seed Delivery System.

Gently move your seed with a Speed King Seed Box Tote belt conveyor system. Seed transported by a belt system has less breakage or cracking damage caused by pneumatic or auger systems.

- The telescoping tube provided with the Seed Box Tote offers a belt system for 100% cleanout of seed varieties with no cross contamination unlike an auger system.
- 180° of horizontal travel with 12' 3-piece telescoping downspout for easy filling of seeding equipment.
- Long tube delivery for one-stop filling of units up to 40' in width.
- Features a spring-loaded seal for on-demand seed delivery without worrying about closing any gates on the center flow container.
- Can start/stop under load.
- Optional liquid inoculator.
- Optional dry inoculator.
- Optional Central Fill Kit.
- Optional digital scales.



New 4-Box Seed Tote

- 8,000 lb axles with 8 bolt HD rims and tires.
- Powered by 5 1/2 hp Honda® gas engine.
- 12' 3-Section telescoping downspout.
- Power discharge and conveyor swing controls are located on the remote.
- Electric shutoff gates are controlled by remote.
- Boxes can be loaded from either side.
- Spring-loaded seal to prevent leakage.
- 100% Cleanout, no cross contamination.
- Will discharge from up to 900 lbs. per minute.
- Gentle handling for minimum damage to seed.
- Heavy-duty construction for years of trouble-free performance.
- Easy transport from dealer to field.
- Optional liquid inoculator.
- Optional dry inoculator



Telescoping tube can easily fill a central fill planter with one stop

Telescoping belt can easily fill a 40' planter



2-Box Seed Tote

- Easy to transport with the tube pivoted to either the front or back—the 2-box tote is only 65" wide (without the chasis).
- Optional 1 hp 12-volt DC motor or 5.5 hp Honda® gas motor with electric start and wireless control.
- 12' 3-Section telescoping downspout.
- Spring-loaded seal to prevent leakage.
- 100% Cleanout, no cross contamination.
- Will discharge from up to 900 lbs. per minute.
- Gentle handling for minimum damage to seed.
- Heavy-duty construction for years of trouble-free performance.
- Easy transport from dealer to field.
- Easy lockdowns located at the base of boxes.
- Flared corners make box placement easy.
- Optional liquid inoculator.
- Optional dry inoculator.

- **Fill your seeding equipment faster**
- **Protect your seed investment from damage**

330/411 Seed Tenders

330/411
BUSHEL CUBIC FT

The Fast, Convenient Seed Handling Machine

Honda® Powered Direct Drive

330/411 Seed Tender has been designed with simplicity and efficiency in mind while maintaining all the capacities that this series delivers.



330/411 Tender in forward transport position

Optional gooseneck chassis shown

330/411 Options

- Gooseneck chassis.
- Bumper-style chassis.
- Scale.
- Liquid inoculator.
- Telescoping 3-piece discharge spout.
- Hydraulic drive/swing/raise and lower.
- Available with telescoping tube with crescent belt.

Standard Features

- 2 Individual compartments.
- ACI Roll Tarp.
- Honeycomb Belt.
- Individual control gates.
- Oversized seed level windows.
- 180° Swing with 9 individual indexing points for precise positioning of conveyor.
- Drop-down side ladder.
- Flex style hopper.

Tender Specifications*

Capacity bushels/cu. ft.	330/411
Height of tank	9' 8"
Length of tank	14'
Width of tank with ladder	8' 2.5"
Width of tank without ladder	7' 10"
Weight (approx.)	5000 lbs.
Length with conveyor forward	26' 8"
Base width	5' 9"
Base length	9' 6"

*Without Trailer

Honeycomb Belt Specifications

Handling capacity* bushels per hour	1,830
Handling capacity* bushels per minute	30.5
Maximum operation angle	34°
Discharge height†	13' 5"

*At maximum operation angle

†At maximum operation angle with tender on Speed King chassis

Speed King's Honeycomb Belt Standard on 330/411 Tender

Less Damage—More Performance!



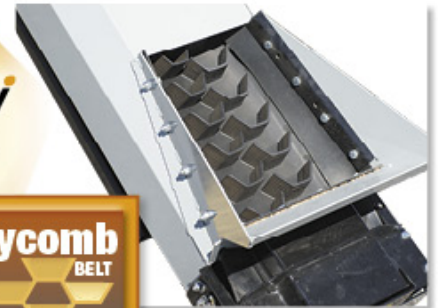
Discharge height adjusts with manual winch



180° Swing with 9 individual indexing points for precise positioning of conveyor



Patent Pending



Up to 30 bushels per minute with Honeycomb Belt at 34° angle

Unmatched Versatility

High Capacity and High Clearance

Conveying Equipment

We've got a handle on handling grain...

BeltVeyor

The Original Belt-In-a-Tube



Portable Seed Conveyor



Multi-Purpose Loader

- 12' PVC belt.
- Capacities up to 6,000 bushels per hour.
- Available in either electric or hydraulic drive.



Tip-Up Conveyor Attachment for 10" BeltVeyor®

- Enhance the versatility of the BeltVeyor and increase capacity at the same time.
- Includes all brackets, sprockets, chain and chain guard.
- Available in painted mild steel.

Tip-Up Conveyor Specifications

Belt width	12"
Hopper width	48"
Hopper length	55"
Hopper height*	12"

*Measured from hopper mid-point

Drive Over Field Loader

Proven Field-Loader portability with drive over features allows for quick unloading and rapid transfer



Belt Conveyor Style Drive-Over Pit

Decades of conveyor manufacturing knowledge and experience can be seen in the Drive-Over Pit Belt Conveyor known for its portability, high volume and durability.

- 4' Wide ramps for easy access.
- 8' Long spring-loaded sidewalls for easy lineup every time.
- 15" Automotive style hubs and wheels for safe towing.
- Electric or hydraulic drive.
- 2 Sizes, 16' or 24' wide, PVC crescent top belting will deliver capacities up to 10,000+ bushels per hour.
- Both styles offer a low 6½' clearance height.
- Power requirement 7½–10 hp electric or hydraulic (14 gpm, 1800 PSI).
- Transport width, 96" with 16' belt.
- Transport width, 104" with 24' belt.
- Transition s-wrap style continuous belt.
- Superior strength with interior trussing in the ramps.
- Bottom is solid sheeted to add strength on uneven ground.



Field Loader

Field Loader Specifications

Overall length	37' 7"	Hopper width	40"
Overall width	8'	Hopper height	6"
Transport height	12'	Hopper length	7'
Discharge height standard	12' 9"	Honda® 13 hp electric start motor	
Discharge height optional	13' 6"	Centrifugal clutch	
Belt width	24"	Max. belt speed	900 fpm
		Min. belt speed	550 fpm



P.O. BOX 526 • SPEARVILLE, KANSAS 67876
620.227.7106 • www.crustbuster.com

