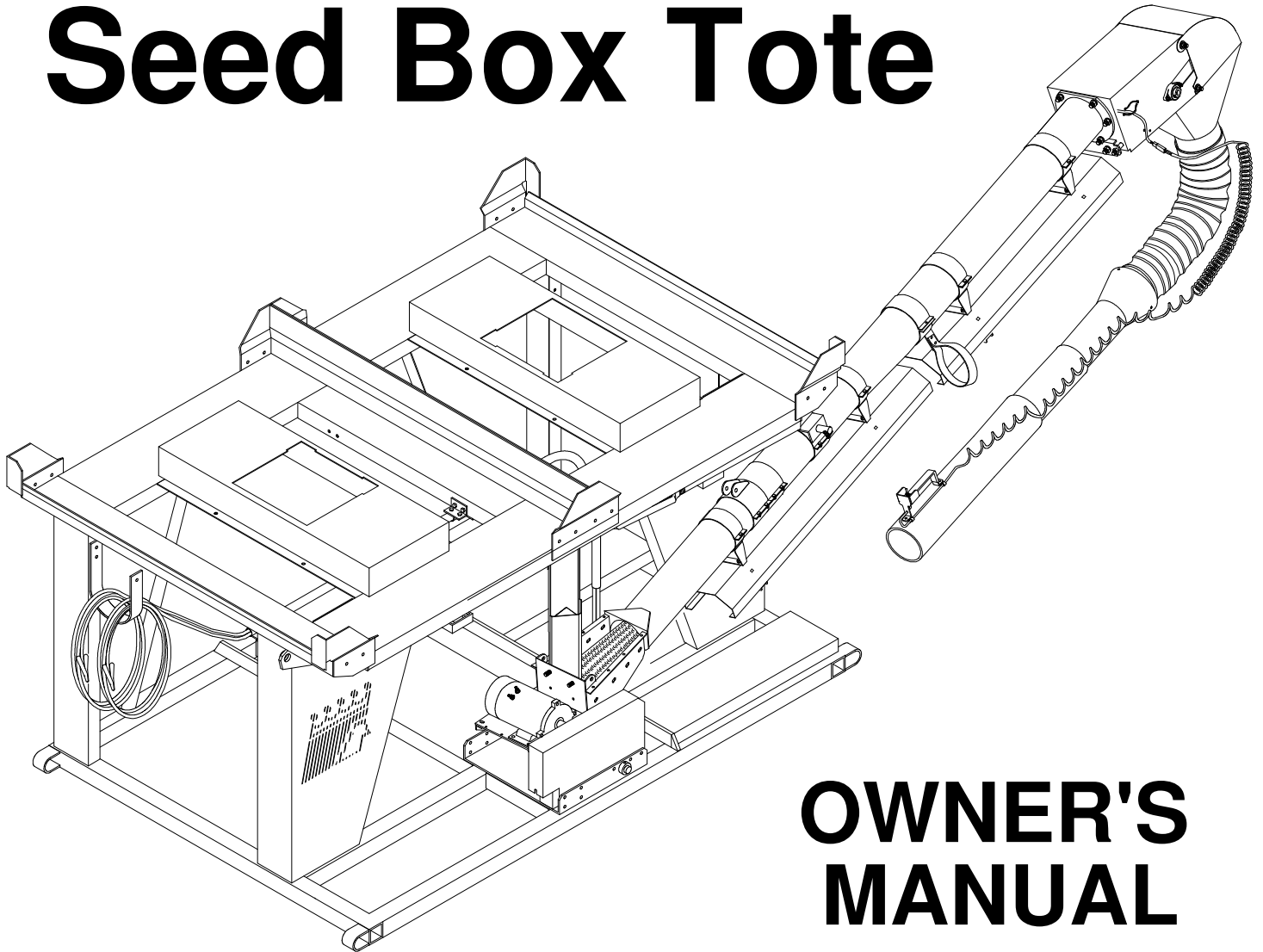




Seed Box Tote



OWNER'S MANUAL

OPERATION • MAINTENANCE • REPAIR PARTS

#17392200 (2007)

Table of Contents

Warranty Information	1	Repair Parts	
Operator Qualifications	2	Stand - Electric	16-17
Safety and Warnings	3-6	Stand - Gas	18-19
Fuel Valve	7	Feed Tube - Electric	20-21
Assembly	7-8	Hopper	21
Loading Seed in Tote Boxes	9	Guard - Electric	21
Wiring Diagram	10	Feed Tube - Gas	22-23
Belt Assembly	11	Hopper	23
Operation, Maintenance, & Belt Training	12-13	Guard - Gas	23
Dimensions	14-15	Spouts	24
		Flexible Tube	25

Identification

Your Seed Tender is identified by a Serial Number and Model Number. Record these numbers in the spaces provided in this manual and refer to them when ordering parts or requesting service.

Serial Number	Model Number
---------------	--------------

Warranty

CrustBuster/Speed King, Inc. of Dodge City, Kansas, warrants consumer products, so far as the same is of our own manufacture, against defects in material and workmanship under normal and reasonable use for a period of one (1) year after date of delivery to the original purchaser. Our obligation under this warranty is limited, however, to furnishing a replacement part for a defective part, or at our option to repair the defective parts without charge, either method F.O.B. our works, provided the consumer gives CrustBuster/Speed King, Inc. written notice within ten (10) days after said part appears to be defective and affords CrustBuster/Speed King, Inc. an opportunity to inspect. Unless otherwise expressly agreed to by CrustBuster/Speed King, Inc., the consumer shall bear the expense of installation.

CrustBuster/Speed King, Inc. will not be liable for consequential damages where the loss is commercial, including but not limited to loss of profit, delays or expenses.

This warranty sets forth the extent of our liability. The foregoing is in lieu of all other warranties, expressed or implied, including any warranties that extend beyond the description of the product.



BE ALERT!

Your Safety is involved.

General Safety Statement



WATCH FOR THIS SYMBOL. IT POINTS OUT IMPORTANT SAFETY PRECAUTIONS. IT MEANS "ATTENTION— BECOME ALERT!"

YOUR SAFETY IS INVOLVED.

It is your responsibility as an owner, operator, or supervisor to know and instruct everyone using this Seed Tender at the time of initial assignment and at least annually thereafter, of the proper operation, precautions, and work hazards which exist in the operation of this Seed Tender in accordance with OSHA Regulations.

Safety Is No Accident

The following safety instructions, combined with common sense, will save your equipment from needless damage and the operator from unnecessary exposure to personal hazard. Pay special attention to the caution notes in the text. Review this manual at least once each year with new and/or experienced operators.



1. Read and understand the operator's manual before operating this Seed Tender. Failure to do so is considered a misuse of the equipment.
2. Make sure Seed Tender is secure before operating.
3. Always keep children away from Seed Tender when operating.
4. Make sure everyone that is not directly involved with the operation is out of the work area before beginning the operation.
5. Make sure all safety devices, shields, and guards are in place and are functional before beginning the operation.
6. Shut off power to adjust, service, or clean.
7. Keep hands, feet, and clothing away from moving parts. It is a good idea to remove all jewelry before starting the operation.
8. Visually inspect the Seed Tender periodically during operation for signs of excessive vibration, loose fasteners, and unusual noises.
9. Before transportation unit, make sure tube assembly is locked into place and safety strap is on and secure.
10. Keep box tote on level surface.

Safety Decals

REMEMBER: If Safety signs have been damaged, removed, become illegible or parts replaced without decals, new decals must be applied. New decals are available from your authorized distributor or factory. Individual decals shown below.

#05326400

WARNING

TIP OVER HAZARD.

TOP HEAVY LOAD. USE A TRAILER OR A VEHICLE WITH ADEQUATE HAULING CAPABILITY.

#05326400

#05303300

CAUTION

1. Read and understand the operator's manual before operating.
2. Keep all safety shields and devices in place.
3. Make certain everyone is clear before starting machine.
4. Keep hands, feet and clothing away from moving parts.
5. Shut off power to adjust machine clearance.
6. Make sure machine is secured before operating.
7. Disconnect power before servicing machine.
8. Make certain machine is secured.

#05315700

CAUTION

PINCH POINT

#05327200

WARNING

DO NOT PLACE
HAND INTO CLEAN
OUT HOLE.

#05327200

#05312400

CAUTION

KEEP ALL SHIELDS IN PLACE

#05325600

CAUTION

SECURE TUBE
WITH SAFETY
STRAP BEFORE
TRANSPORTING.

#05328000

DANGER

SAFETY HAZARD
DO NOT ENTER
ROTATING COMPONENTS
INSIDE HOPPER.



Danger

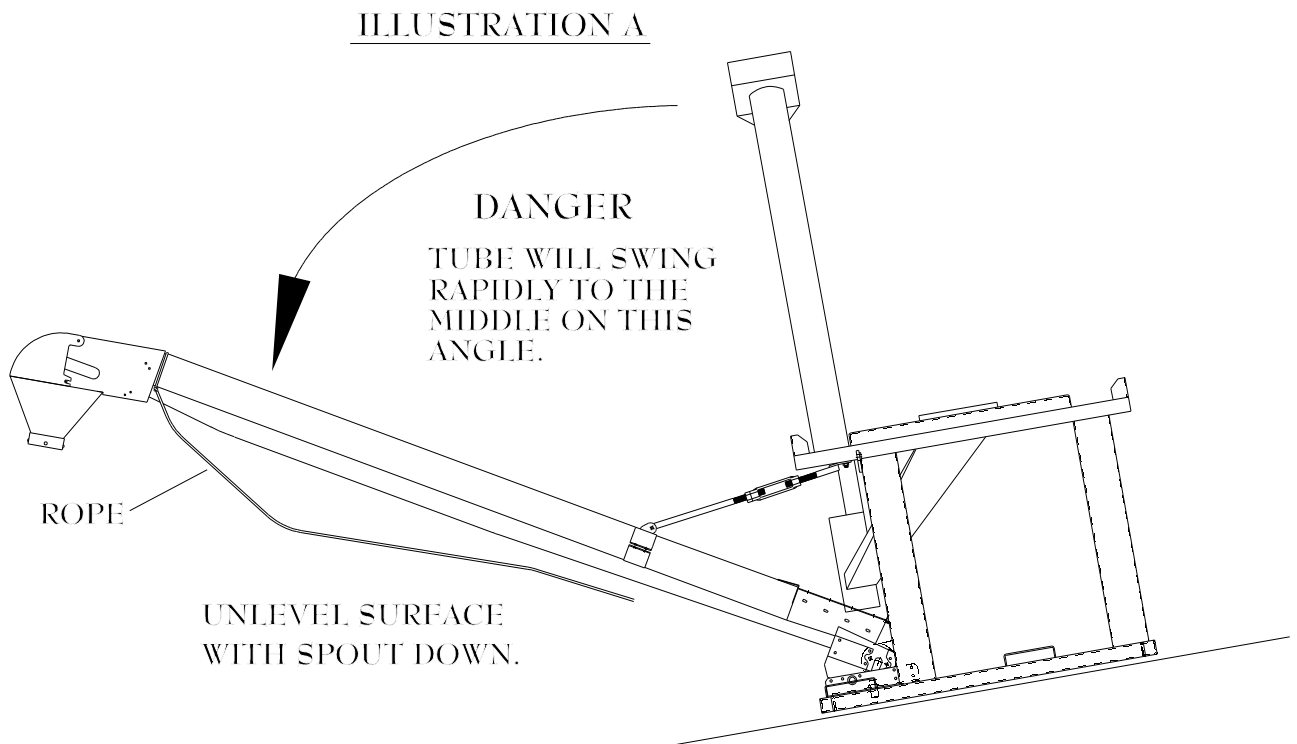
**BE ALERT! YOUR PERSONAL SAFETY IS INVOLVED.
ALWAYS PARK TENDER ON LEVEL SURFACE TO UNLOAD.**

Before releasing safety strap that secures tube assembly, make sure tender is sitting on a level surface.

If parked on an unlevel surface, and the tube assembly is not restrained, it will swing rapidly and out of control to one side or the other.

The rope attached to the tube is to assist in guiding the tube. If tube is swinging out of control, the rope may not control the tube.

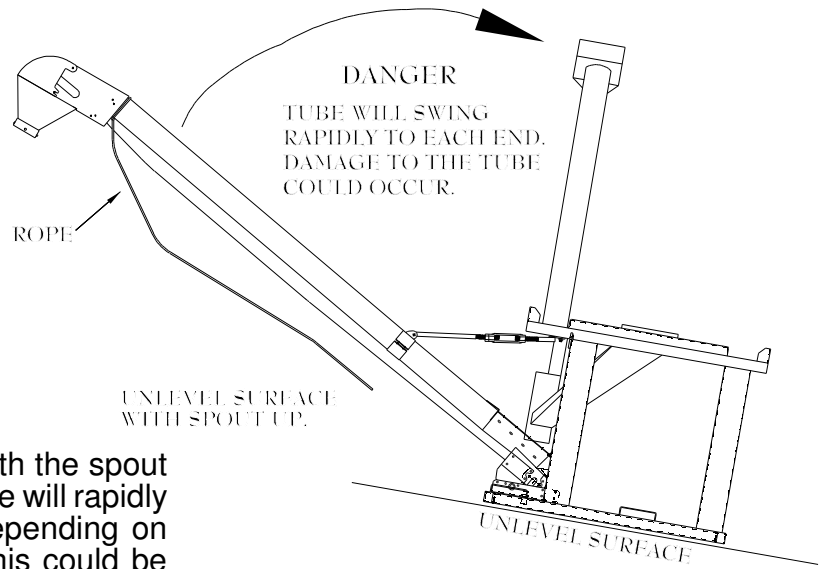
If parked on an unlevel surface with the spout side down, (See *illustration A*) the tube will rapidly swing out.





Danger

ILLUSTRATION B

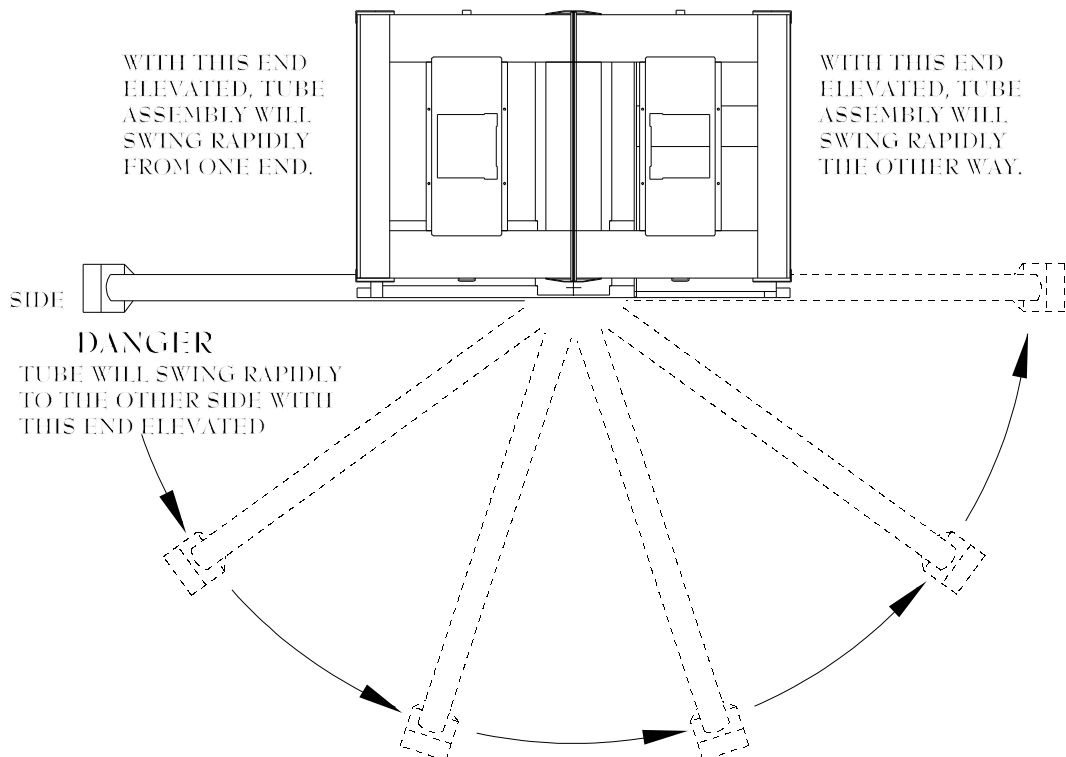


If parked on an unlevel surface with the spout side up, (See *illustration B*) the tube will rapidly swing to one end or the other depending on which side the gravity pulls it. This could be very hazardous for anyone standing in its path. Be very cautious of situation.

If parked on an unlevel surface with the spout side up, (See *illustration C*) the tube will rapidly swing from one end to the other.

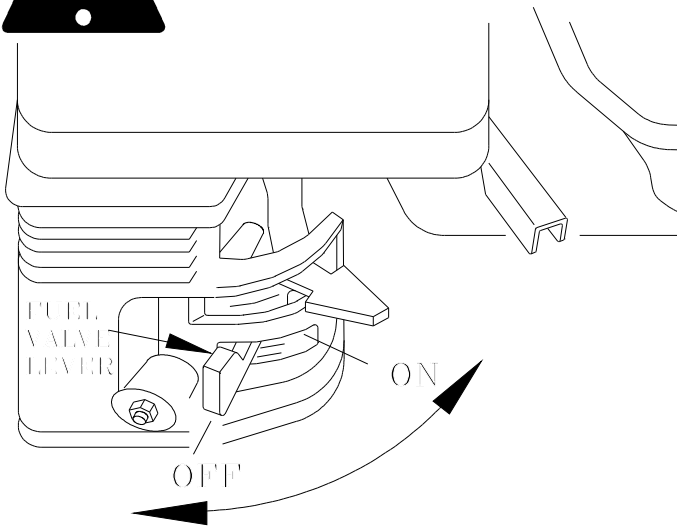
This could be very hazardous for anyone standing in its path. Be very cautious of this situation. This could also cause damage to the tube assembly.

ILLUSTRATION C





CAUTION



FUEL VALVE

When engine is not in use, leave the fuel valve lever in the OFF position to prevent

- carburetor flooding
- fuel in the oil crank case because of transporting vibrations
- the possibility of fuel leakage.

See engine owner's manual to help you avoid other damage to your engine.

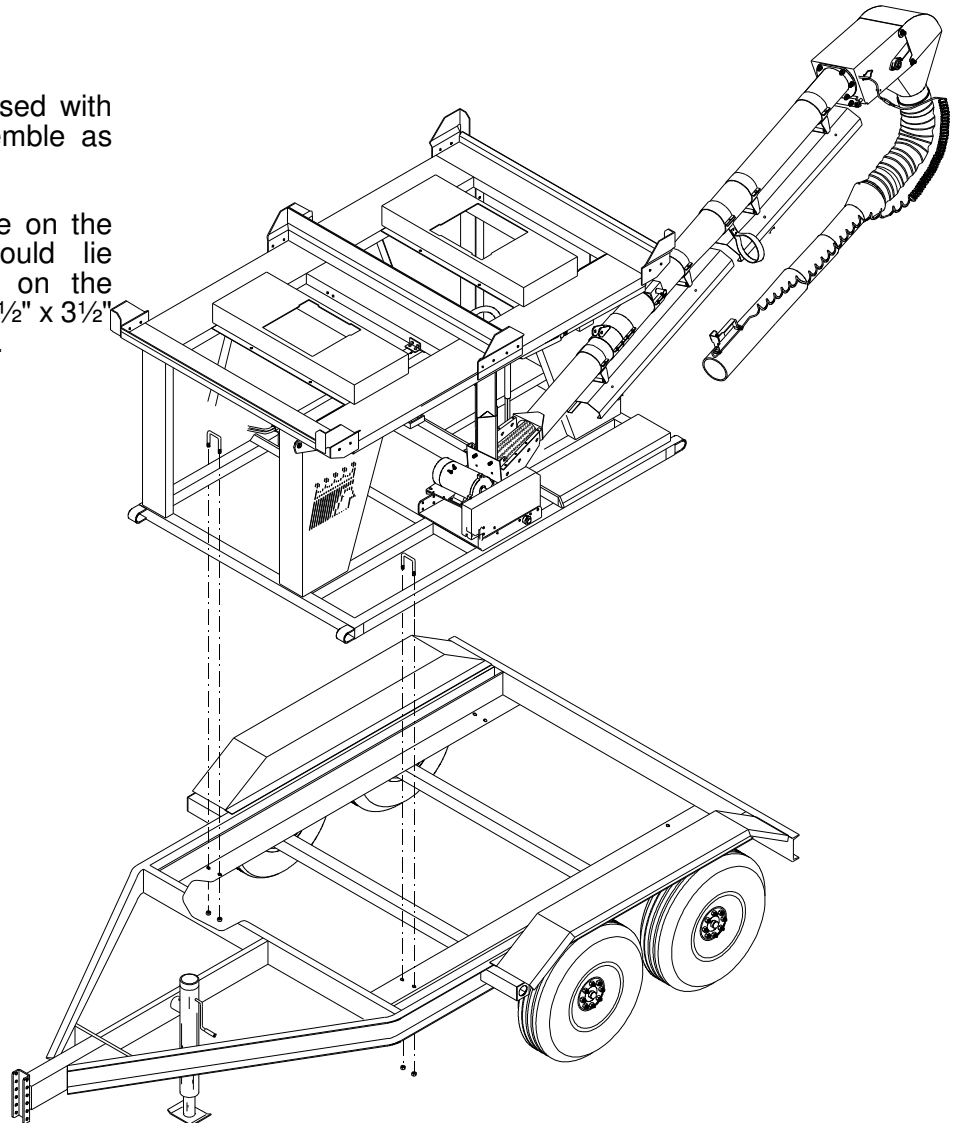
NOTE: CrustBuster recommends fuel valve be shut off and the motor run completely out of fuel before transporting.

Assembly

If trailer has been purchased with the Seed Box Tote, assemble as follows:

Center the Seed Box Tote on the trailer. The tubes should lie between mounting holes on the trailer. Attach using $\frac{1}{2}$ " x $2\frac{1}{2}$ " x $3\frac{1}{2}$ " u-bolts and $\frac{1}{2}$ " nylock nuts.

Reference Illustration.



Assembly

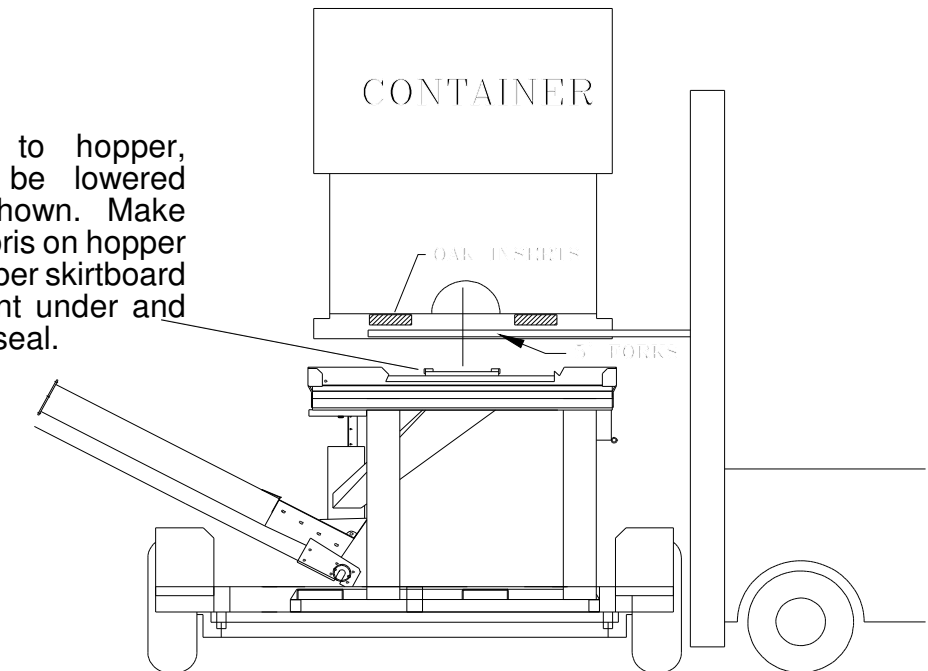


CAUTION

ALWAYS LIFT THE CONTAINER FROM THE BOTTOM. NEVER USE STRAPS OR LIFT BY TYING ANYTHING TO THE SIDES OF THE CONTAINER. REQUIRES MINIMUM 3000 LB. FORKLIFT TO PICK UP FULL CONTAINER. OAK INSERTS, LOCATED IN THE BASE OF THE CONTAINER, REDUCE LIPPAGE ON FORKLIFT FORKS AND PROVIDE STRUCTURAL SUPPORT. RECOMMENDED FORKS ON FORKLIFT TO BE AT LEAST 5 FEET TO MAKE SURE FORKS EXTEND IN AND REST ON OAK INSERTS.

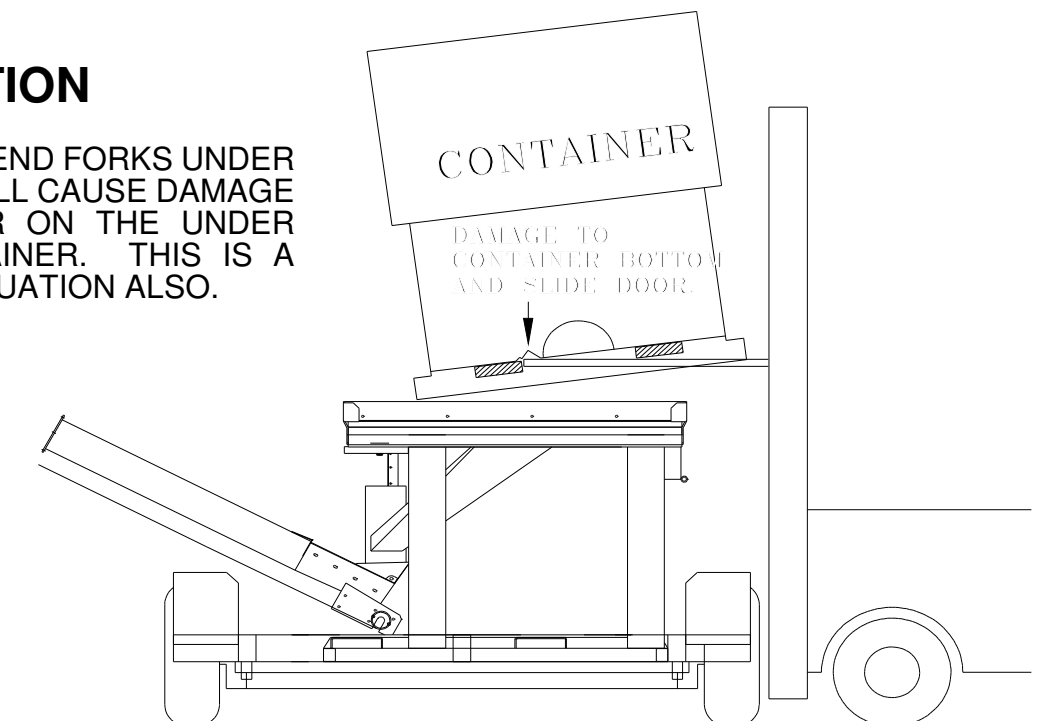
NOTE:

For proper seal to hopper, container should be lowered straight down as shown. Make sure there is no debris on hopper top. Make sure rubber skirtboard deflector is not bent under and preventing a good seal.



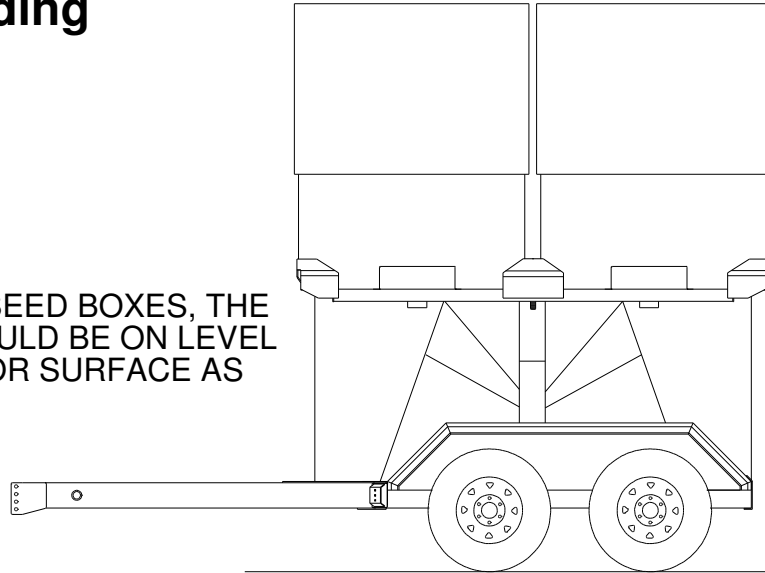
CAUTION

FAILURE TO EXTEND FORKS UNDER OAK INSERTS WILL CAUSE DAMAGE TO SLIDE DOOR ON THE UNDER SIDE OF CONTAINER. THIS IS A DANGEROUS SITUATION ALSO.



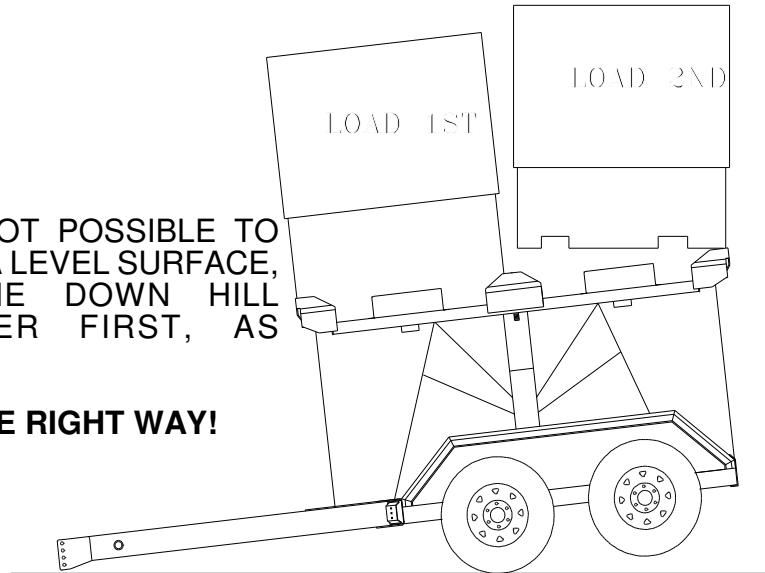
Seed Box Loading

TO LOAD SEED BOXES, THE TOTE SHOULD BE ON LEVEL GROUND OR SURFACE AS SHOWN.



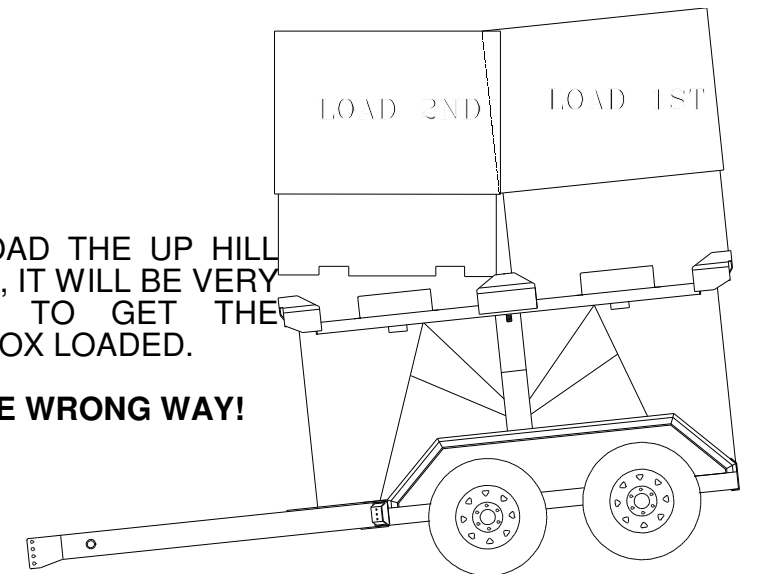
IF IT IS NOT POSSIBLE TO LOAD ON A LEVEL SURFACE, LOAD THE DOWN HILL CONTAINER FIRST, AS SHOWN.

THIS IS THE RIGHT WAY!

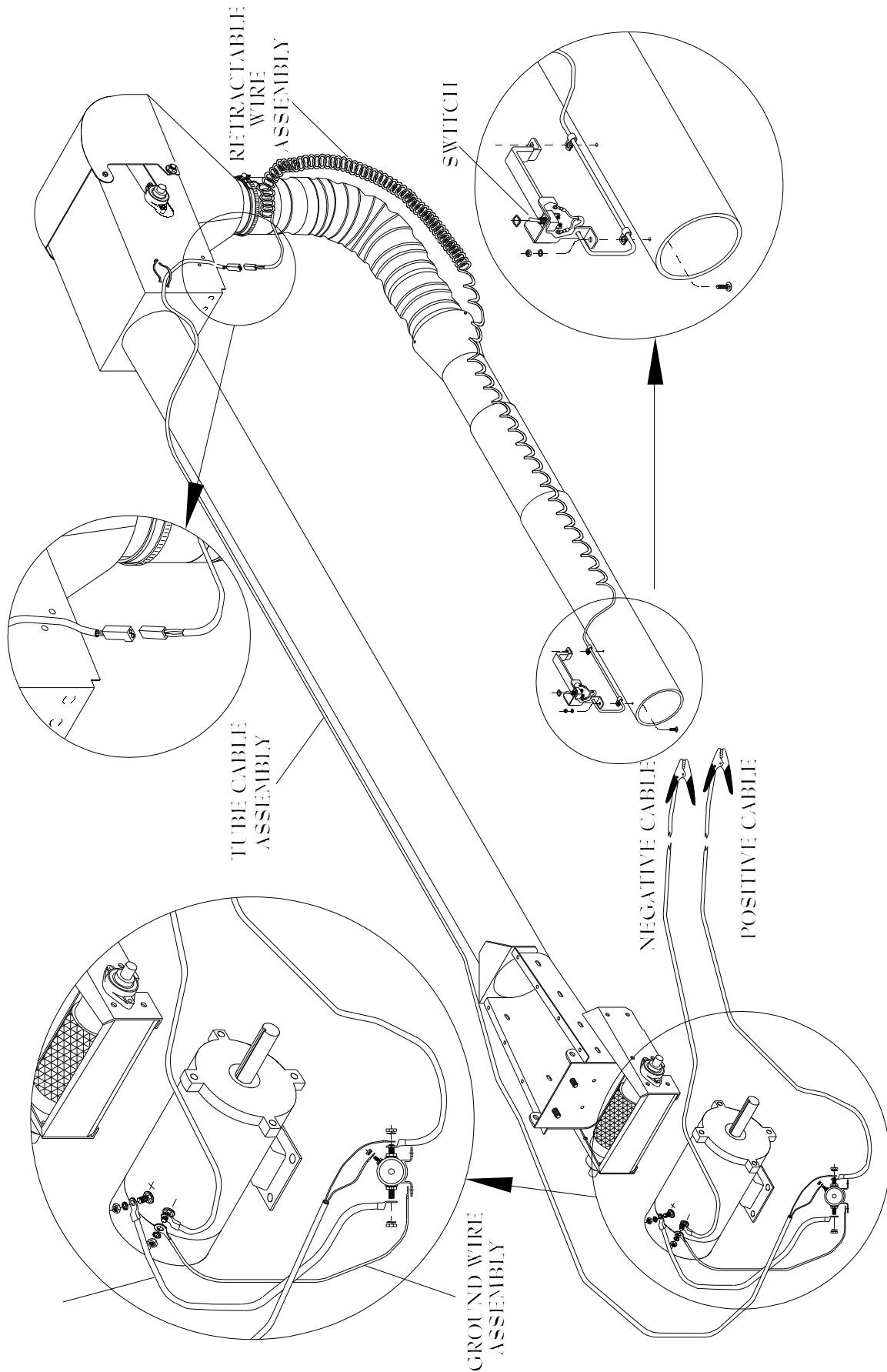


IF YOU LOAD THE UP HILL BOX FIRST, IT WILL BE VERY DIFFICULT TO GET THE SECOND BOX LOADED.

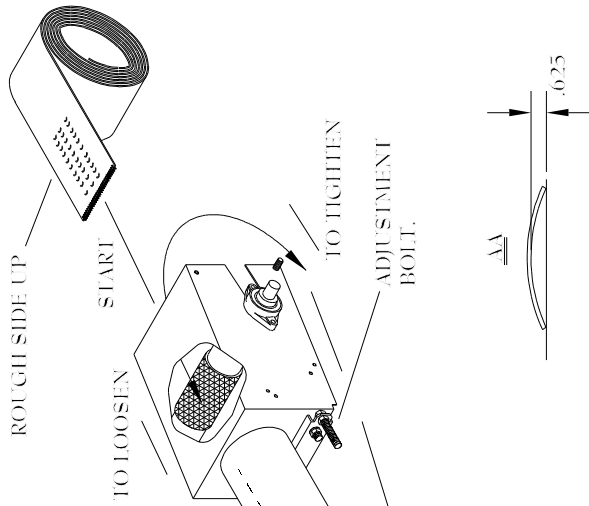
THIS IS THE WRONG WAY!



Wiring Diagram

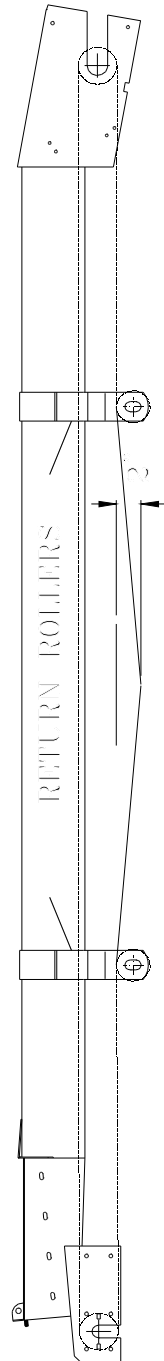


Belt Assembly



BELT TIGHTENING INSTRUCTIONS

Belt should be tightened before you train the belt. Tightening the belt is done on the head roller by tightening the take up bars evenly. Belt is tight when applying 25 lbs. of force, centered between the return rollers, there is no more than 2 inches of deflection.

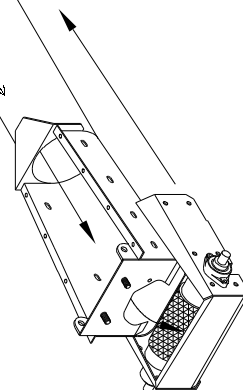


BELT ASSEMBLY INSTRUCTIONS

At the start point, see view of head and tail assembly. Drop belt over the top of head roller and gravity feed belt down the tender tube to the bottom. Guide the belt over the top of the tail roller. Make sure rough side is UP and the smooth side is DOWN against the inside of wall of the tube.

Route both ends around head and tail rollers and over all return idlers mounted under the tube. Slide belt forward or back through tube so the ends of the belt meet at a convenient location between return idlers to facilitate joining.

Align and interlace belt and clipper lacings. Slip splice pin (Plastic covered cable) through clipper lacings to secure.



Pre-Operation Check List

1. Check all bearings for proper lubrication.
2. Check the tube for foreign material.
3. Check belt for proper tension.
4. Start unit and check tender belt alignment while unit is empty.

BELT CARE

It is suggested that the unit be run every two to three days or more often if possible. This tends to keep the belt alive and stops any forming of the belt to the curvature of the tube while the unit is not in use.

NOTE: Belt may deteriorate if not in use and exposed to weather conditions for any prolonged period of time.

Operation Sequence

1. Check drive chain for proper tension.
2. Make sure tender belt is properly tensioned.
3. Allow unit to run empty for a few minutes to flex tender belt.
4. Check tender belt for proper alignment.
5. Before shutting power off, be certain head and tail unit is empty.

STORAGE

Temporary Storage

1. Relieve tension on tender belt.
2. Store all belt equipment in a dry place. If equipment cannot be stored out of the weather, cover engine and mechanical parts with waterproof material.

Prolonged Storage

1. Remove all belts and store in a cool, dark, dry place.
2. Wash tender belt thoroughly.
3. Wash tender tube both inside and out.
4. Lubricate all bearings.
5. Store in a dry shelter.

Maintenance

Preventive maintenance is the key to the long life of any mechanical device.

Careful and systematic inspection of the Seed Tender will result in maximum, trouble-free service.

BELT REPLACEMENT

To replace the belt, cut it into and hand rotate the head roller until belt has been removed. Install appropriate belt as outlined in assembly instructions.

HEAD ASSEMBLY TAKE-UP

After extended use, the tender belt may stretch to the point that there is not sufficient take-up in the head assembly to tighten it. Obtain additional take-up by cutting a 6" to 8" section from the belt. A new splice lacing may be ordered from your CrustBuster/Speed King distributor or from the factory.

PERIODIC CLEAN-OUT

Due to the characteristics of certain materials, residue sometimes collects between the tender belt and the tube. Check the unit periodically for any material build up in this area. If residue appears excessive, remove the tender belt and thoroughly wash the belt and tube. Allow belt and tube to dry before reinstalling the belt.

When the tender is not being used, secure belt to the tube to prevent belt from flopping in the wind, possibly breaking return idlers or ripping belt.

LUBRICATION

All bearings which are fitted with grease zerks should be lubricated at the conclusion of each operating day. Before greasing the bearings, make certain the zerks are free of dirt, otherwise this will be passed into the bearing race. If the unit will be out of service for a period of time, purge the bearings.

BELT TRAINING PROCEDURE

A tender belt correctly installed and trained will run straight and true. The belt must run centered on all terminal rollers, take-up rollers, and return idlers throughout the entire belt length.

Incorrect installation and training can result in severe edge damage, material spillage, material leakage through the skirt rubber at the loading point, and excessive power demands. Material spillage is the usual reason for belt carcass ruptures and pulley cover gouging and stripping, while leakage at the skirt rubber results in excessive conveyor cover wear under the skirts.

Maintenance - (cont'd)

ALIGNMENT

All rotating parts -head roller, tail roller, and return idlers- must be at a 90 degree angle to the direction of belt travel, must be level, and the midpoint of each centered on a line when properly aligned.

Alignment is checked by running a tight wire from the center of head roller to center of the tail roller. Level all rotating parts. If a part is not level, the belt will run to the lower side.

BELT SPLICING

A belt must not run out at the splice area. Runout will occur if the belt is not cut square or splice is not installed square.

Operation

1. Prior to the start-up, check to see that belt is free from any objects that would bind or tear.
2. On starting for the first time, with no load on belt, apply power for a few seconds only to see that the tender belt is well centered in the tube and on the return.
3. It should be noted at this time that too much tension on the tender belt will make adjustment or training much more difficult, shorten the life of the belt, and waste power. The belt should be tensioned tight enough so the drive roller does not slip. The belt is tight when applying 25 pounds of force, centered between the return rollers, there is no more than 2 inches of deflection.

BELT TRAINING

It is essential that the tender belt be properly trained at all times. For this reason, all rotating parts should always be at right angles to the tender belt.

Slight adjustment of roller shafts may be required to keep belts centered on them i.e., if the belt runs to one side of the roller - apply more tension to this side of the belt by advancing the roller shaft on this side. This can be done on the head section as long as adjustment bolt does not vary more than 1/4". If it does, and belt will still not center on both rollers, the tail section is probably out of square.

To square tail section roller, even out the head roller until adjustment bolts are equal. On tail section, loosen bearing bolts on opposite side the belt is off. **CAUTION: LOOSEN BEARING BOLTS JUST ENOUGH SO IT TAKES A BLOCK OF WOOD AND A SMALL HAMMER TO MOVE THE BEARING.** To adjust tail section, 1/32" in most cases, will move the belt. Tail roller bearings only have about a 1/16" to 3/32" movement total. Tighten the bearing, and go to the head section and retrain the belt.

If the belt tends to veer to one side of the return strand, the belt can be centered by "knocking" ahead (in the direction of belt travel) the end of the return idler to which the belt runs. A belt correctly installed will usually train well both empty and loaded, except as noted:

1. One or more rotating parts not in alignment.
2. Belt tensions in some part of system (usually at tail section) are below minimum recommended.
3. Belt not loaded centrally.

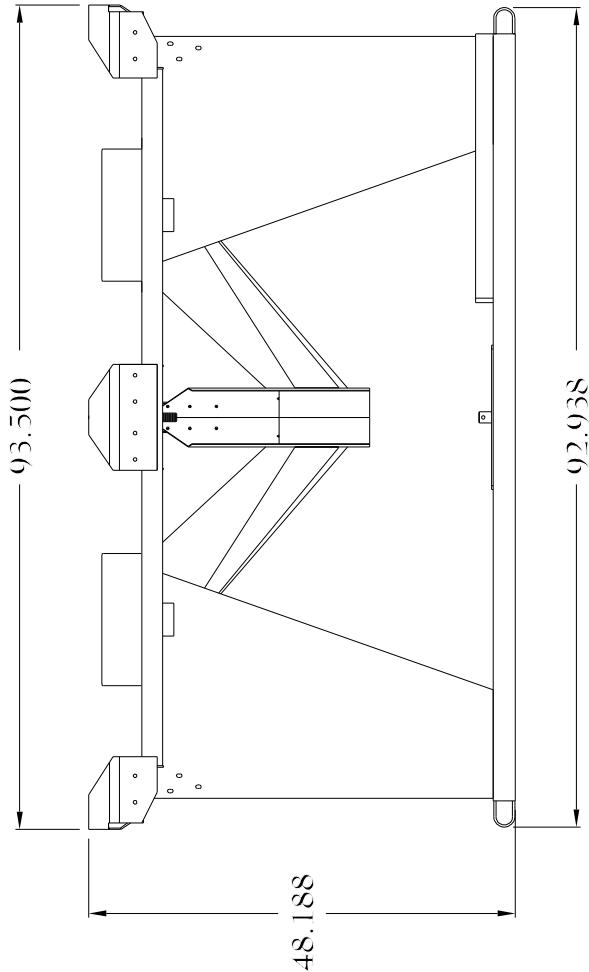
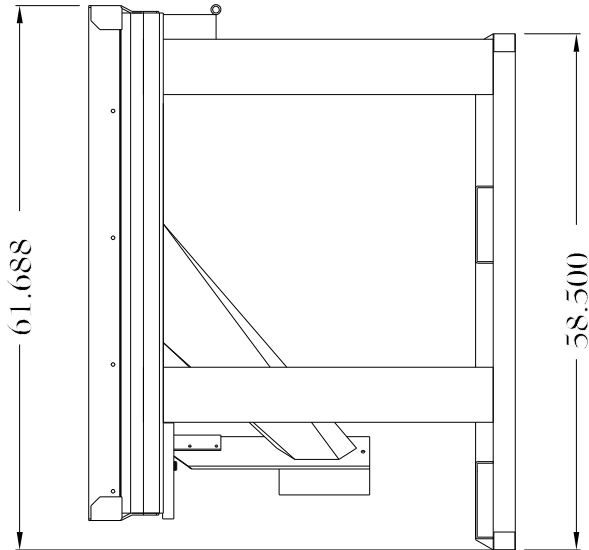
When a belt is initially started, it should be jogged around the system to determine if a major runout occurs which could damage belt and belt edges. If runout occurs at some point of the system, the reason is usually a return idler or roller out of alignment before the runout. Alignment should be rechecked before restarting.

After the belt can be safely run without damage, final training should begin with the head roller. The belt must enter the head roller in the center without movement from side to side. If the belt is not centered on the tail pulley, the return strand of belt should be observed for any section which is not centered on the return idlers. If the belt is not centered at some point, move return idlers starting before this point to correct centering of belt. Movement of idler bracket should be gradual and only 1/16" to 1/8" remembering that the belt will move in the direction that it first contacts the idler. The same corrective action should be taken at the tail roller.

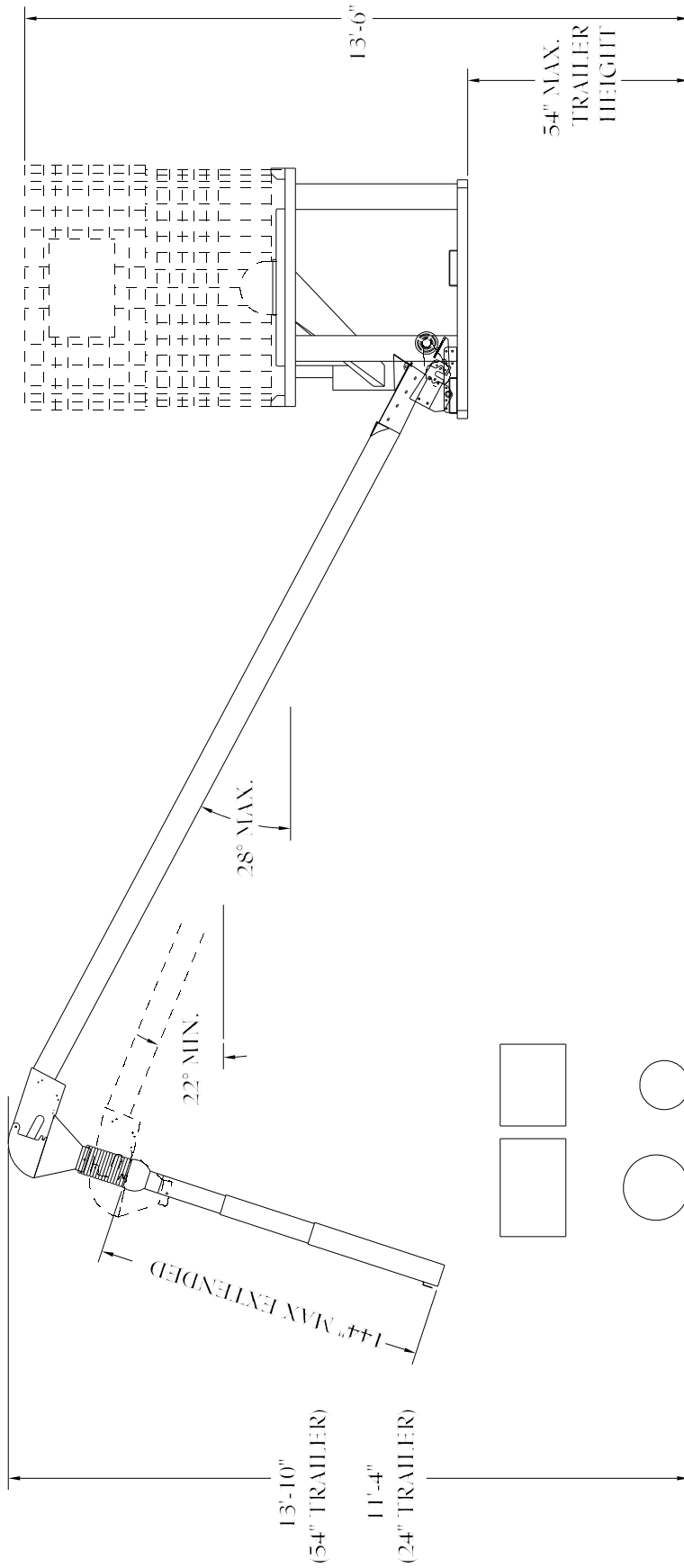
After the belt is trained empty, the belt should be trained with a load. The take-up adjustments are made to prevent belt slip and keep tensions at all points above minimums recommended when belt is operating with a load.

If slip occurs under load, additional belt tension should be adjusting the take-up only enough to prevent slip from occurring under load, and when started with a load.

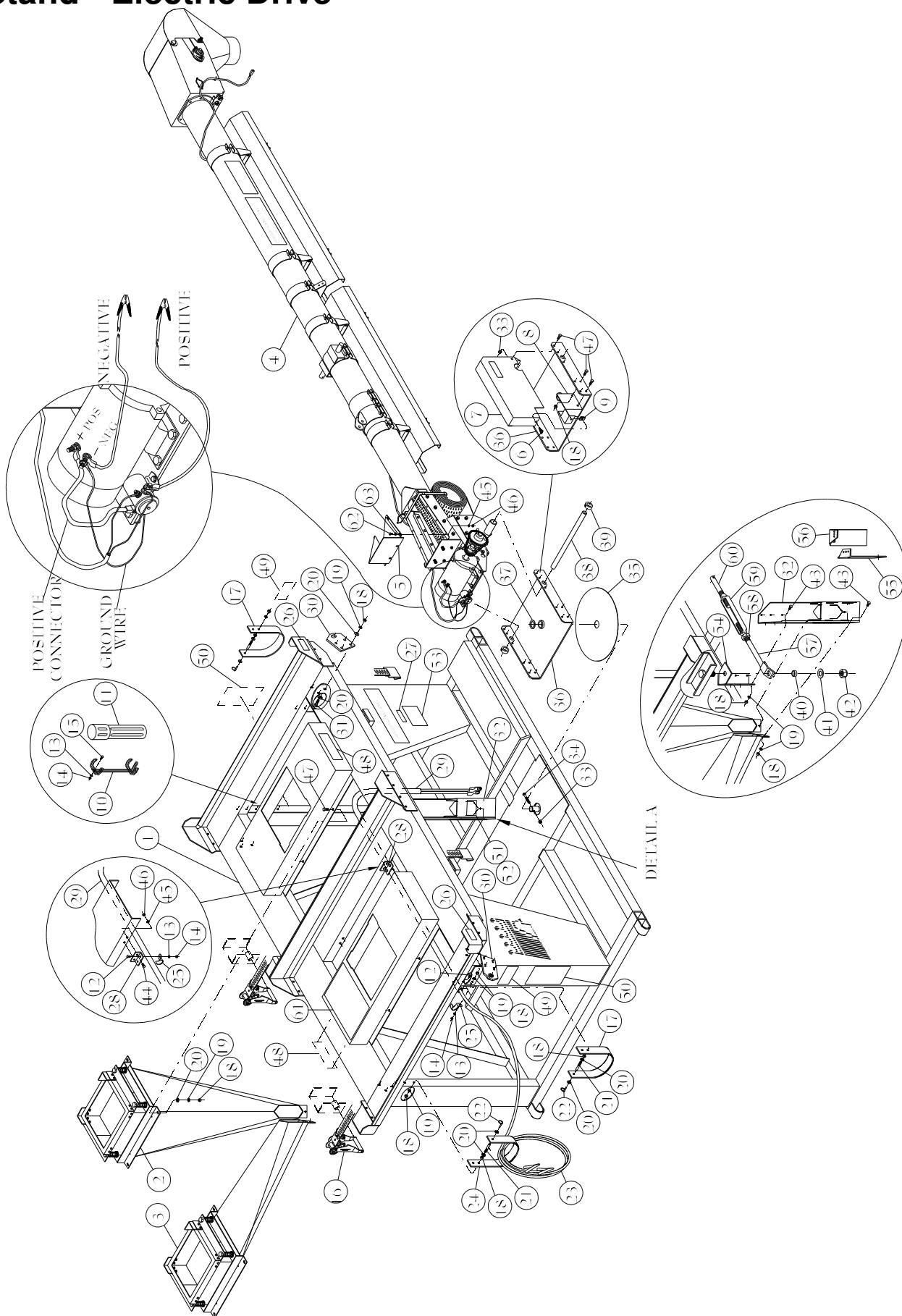
Seed Box Tote Dimensions



Seed Box Tote Dimensions

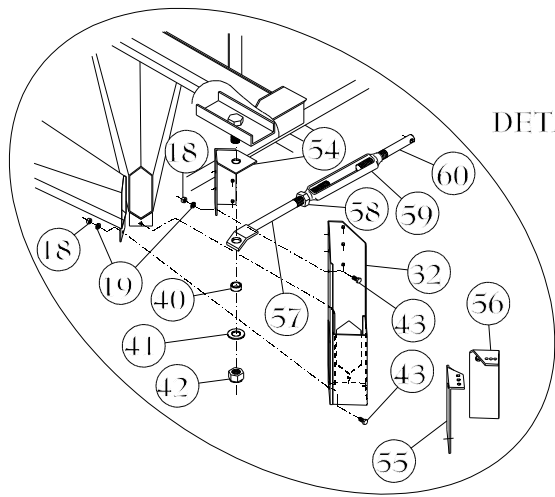


Seed Box Tote Stand - Electric Drive



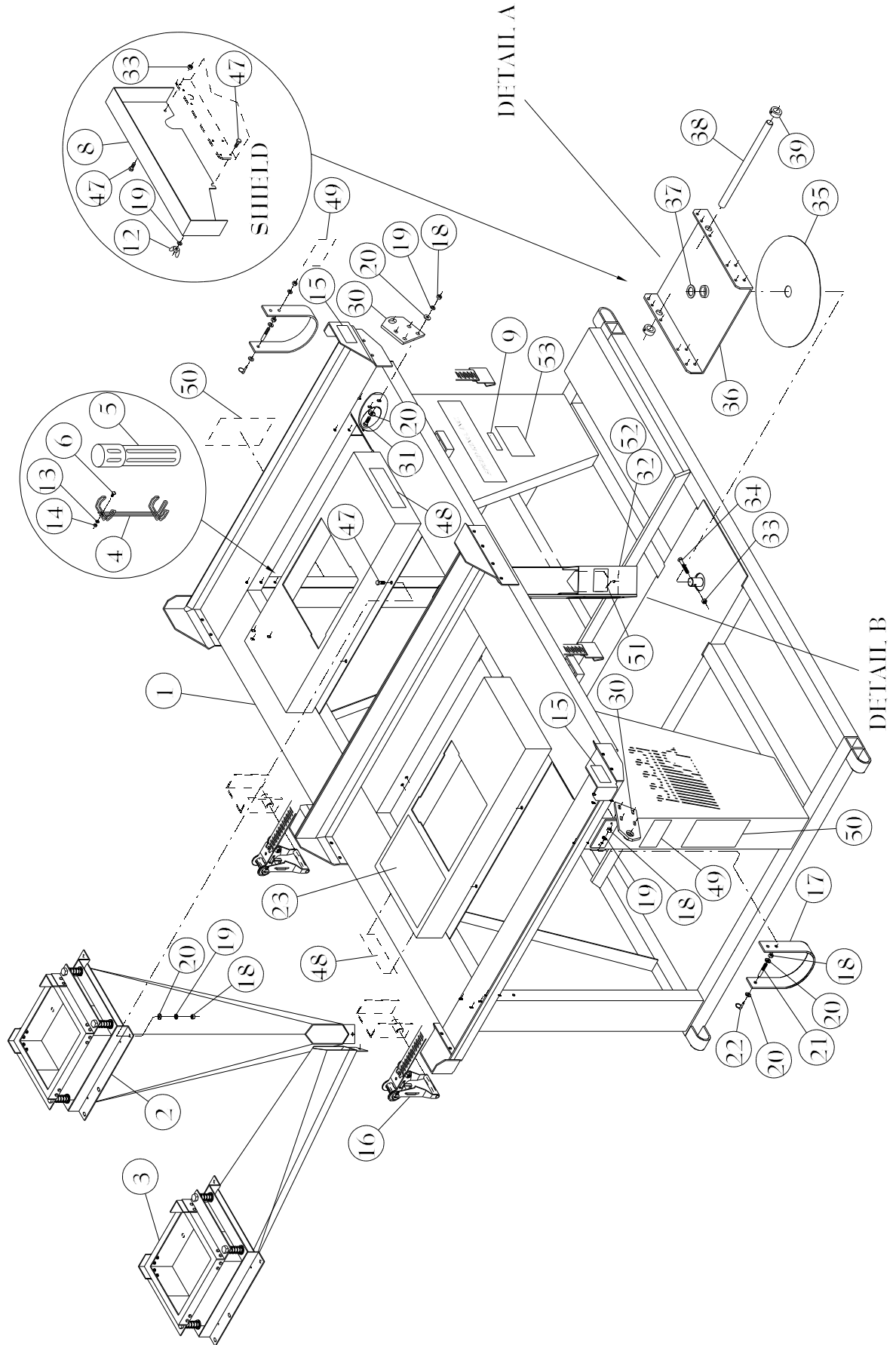
Seed Box Tote Stand - Electric Drive

Item	Qty	Part No.	Description	Item	Qty	Part No.	Description
1	1	82480500	Frame	32	1	82119900	Dual Spout Bracket
2	1	62486600	Spout Rear	33	2	330837	Hex Nylock Nut 3/8"
3	1	62487400	Spout Front	34	1	331884	HHCS 3/8" x 2 1/2"
4	1	62766100	15' Feed Tube Assembly	35	1	570630	Wear Plate 16"
5	1	82099300	Tail Hopper	36	1	82114000	Pivot Base
6	1	01489400	Thumb Screw 5/16" x 3/4"	37	1	332569	Machine Bushing 1 7/8" x 1 1/4" x 10ga
7	1	62382700	Chain Guard	38	1	17302100	Tube Shaft
8	1	17306200	Guard Bracket	39	2	06409700	Set Collar 1" Steel
9	1	01574300	Clip Nut 5/16" U-Type	40	1	605220	Bushing 1 1/4" x 1 x 1/2" HS
10	1	02890200	Cannister Mounting Bracket	41	1	330407	Flat Washer 1"
11	1	02889400	Cannister	42	1	330597	Hex Nylock Nut 1"
12	2	01057900	HHCS 1/4" x 3/4"	43	8	01145200	HHCS 3/8" x 3/4"
13	6	330050	Lock Washer 1/4"	44	2	01144500	HHCS 5/16" x 3/4"
14	6	332205	Hex Nut 1/4"	45	6	330845	Lock Washer 5/16"
15	2	336636	Carriage Bolt 1/4" x 3/4" SS	46	6	330811	Hex Nut 5/16"
16	2	03249000	Ratchet 27' Flat Hook	47	11	01017300	HHCS 3/8" x 1"
17	2	17634700	Carrier Strap Long	48	2	05310800	Decal Debris
18	30	330035	Hex Nut 3/8"	49	2	05325600	Decal Safety Strap
19	25	330043	Lock Washer 3/8"	50	2	05326400	Decal Warning Tip-Over
20	26	330894	Flat Washer 3/8"	51	1	05327200	Decal Warning Clean-out
21	3	16864100	Pin 3/8" x 2 1/2"	52	1	05328000	Decal Danger Hopper
22	3	330928	Klik Pin 3/16"	53	1	05303300	Decal Warnings
23	1	62375100	Battery Cable	54	1	82133000	Spout Attachment
24	1	16865800	Carrier Strap	55	1	17385600	Spout Gate
25	2	03102100	Conduit Strap 1"	56	1	17387200	Spout Gate
26	2	05315700	Decal Pinch Points	57	1	82115700	Turnbuckle Bracket
27	1	03439700	Decal Patent No. 6,505,760	58	1	332288	Jam Nut 1"
28	1	17284100	Cable Bracket	59	1	06814800	Turnbuckle 1" x 8 3/4"
29	1	17275900	Conduit 1" x 54"	60	1	17287400	Turnbuckle Pin 1" x 10"
30	2	82089400	Transport Lock	61	1	606327	Decal Loading Tote Box
31	6	01158500	HHCS 3/8" x 1 1/4"	62	4	01010800	HHCS 5/16" x 1"
				63	4	330852	Flat Washer 5/16"



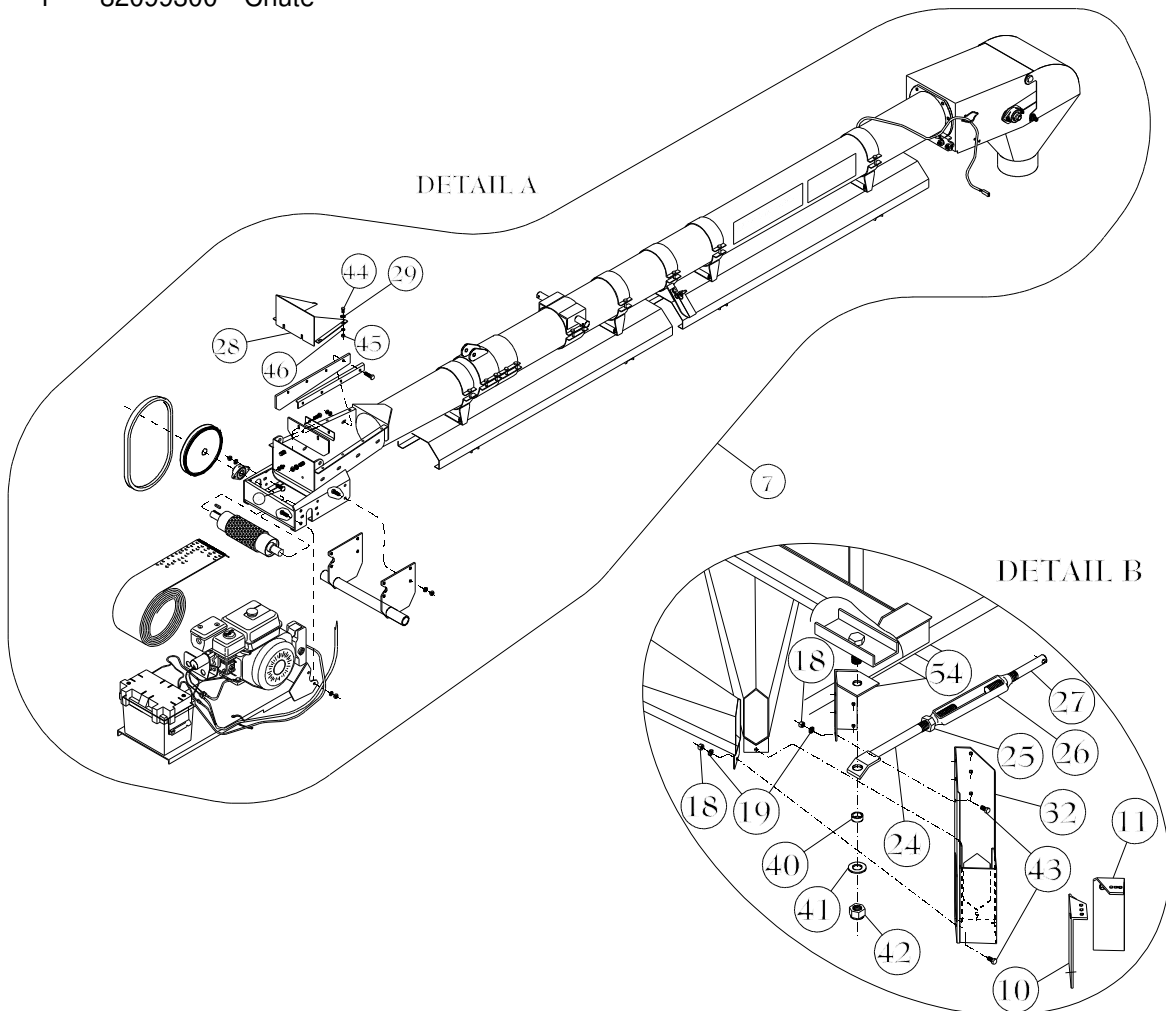
DETAIL A

Seed Box Tote Stand - Gas Drive

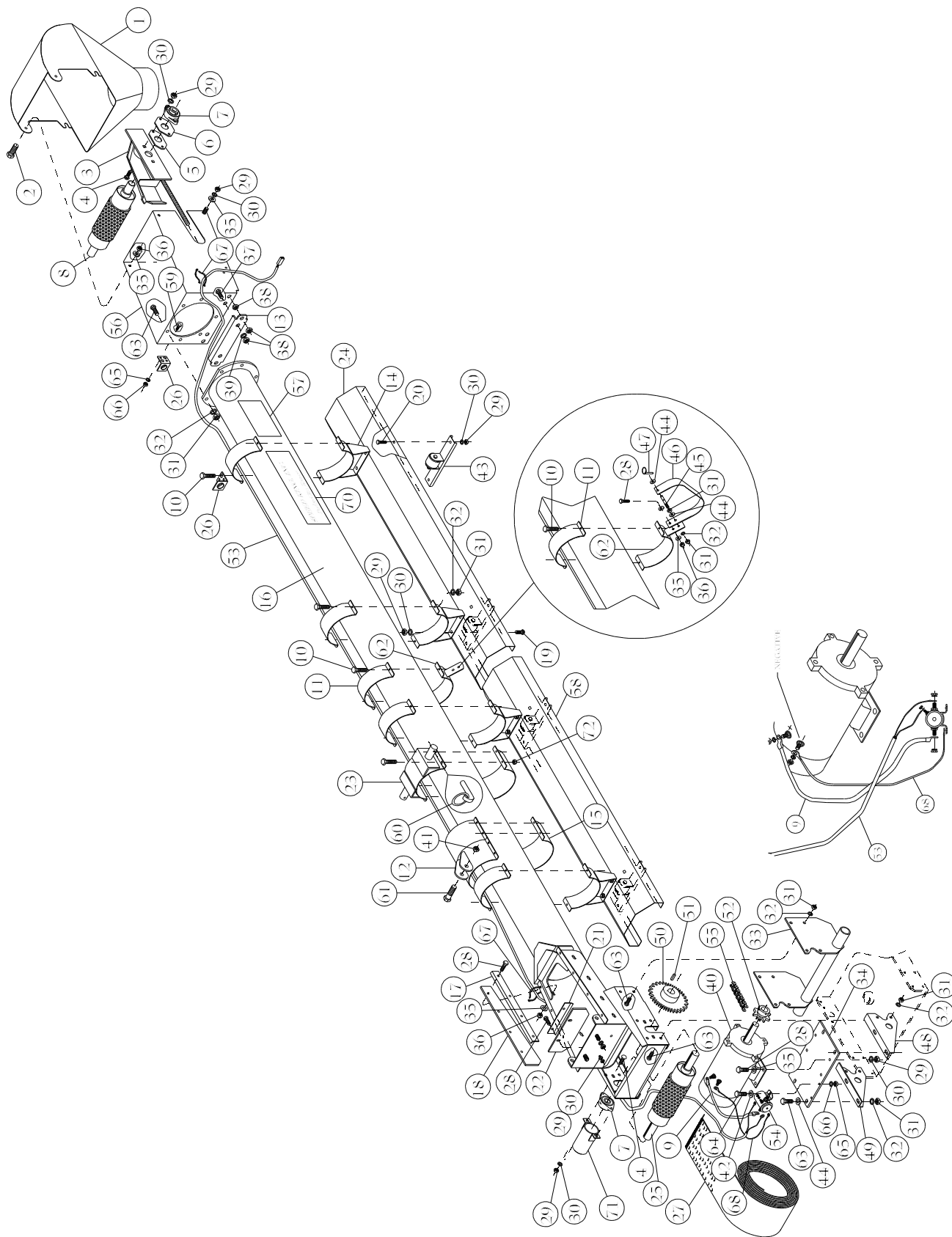


Seed Box Tote Stand - Gas Drive

Item	Qty	Part No.	Description	Item	Qty	Part No.	Description
1	1	82480500	Frame	29	4	330852	Flat Washer 5/16"
2	1	62486600	Spout Rear	30	2	82089400	Transport Lock
3	1	62487400	Spout Front	31	6	01158500	HHCS 3/8" x 1 1/4"
4	1	02890200	Cannister Mounting Bracket	32	1	82119900	Dual Spout Bracket
5	1	02889400	Cannister	33	1	330837	Hex Nylock Nut 3/8"
6	2	336636	Carriage Bolt 1/4" x 3/4"	34	1	331884	HHCS 3/8" x 2 1/2"
7	1	62767900	15' Feed Tube Assembly	35	1	570630	Wear Plate 16"
8	1	62605100	Belt Guard	36	1	82114000	Pivot Base
9	1	03439700	Decal Patent No. 6,505,760	37	1	332569	Machine Bushing 1 7/8" x 1 1/4" x 10ga
10	1	17385600	Spout Gate	38	1	17302100	Tube Shaft
11	1	17387200	Spout Gate	39	2	06409700	Set Collar 1" Steel
12	1	334847	Wing Nut 3/8"	40	1	605220	Bushing 1 1/4" x 1" x 1/2" HS
13	2	330050	Lock Washer 1/4"	41	1	330407	Flat Washer 1"
14	2	332205	Hex Nut 1/4"	42	1	330597	Hex Nylock Nut 1"
15	2	05315700	Decal Pinch Point	43	8	01145200	HHCS 3/8" x 3/4"
16	2	03249000	Ratchet 27' Flat Hook	44	4	01144500	HHCS 5/16" x 3/4"
17	2	17634700	Carrier Strap Long	45	4	330811	Hex Nut 5/16"
18	20	330035	Hex Nut 3/8"	46	4	330845	Lock Washer 5/16"
19	19	330043	Lock Washer 3/8"	47	10	01017300	HHCS 3/8" x 1"
20	24	330894	Flat Washer 3/8"	48	2	05310800	Decal Debris
21	2	16864100	Pin 3/8" x 2 1/2"	49	2	05325600	Decal Safety Strap
22	2	330928	Klik Pin 3/16"	50	2	05326400	Decal Warning Tip-Over
23	1	606327	Decal Loading Caution	51	1	05327200	Decal Warning Clean-out
24	1	82115700	Turnbuckle Bracket	52	1	05328000	Decal Danger Hopper
25	1	332288	Jam Nut 1"	53	1	05303300	Decal Warnings
26	1	06814800	Turnbuckle 1" x 8 3/4"	54	1	82133000	Spout Attachment
27	1	17287400	Turnbuckle Pin				
28	1	82099300	Chute				

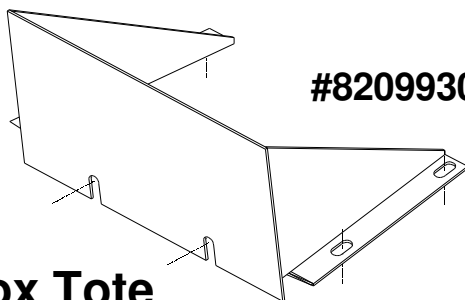


Seed Box Tote 15' Feed Tube Assembly Electric Drive



Seed Box Tote 15' Feed Tube Assembly Electric Drive

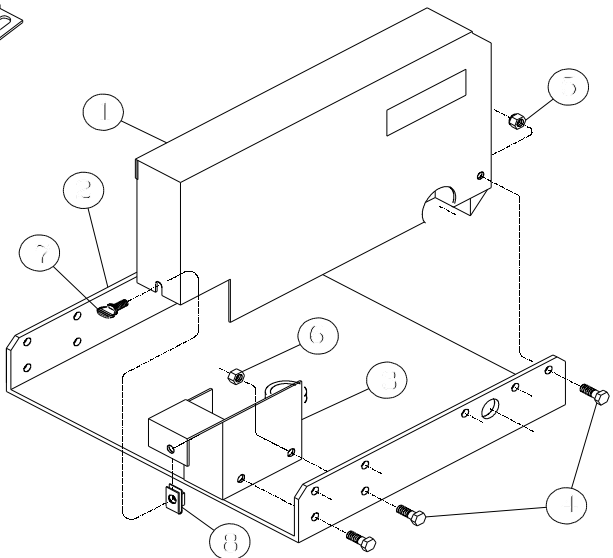
Item	Qty	Part No.	Description	Item	Qty	Part No.	Description
1	1	81842700	Spout	36	11	331611	Hex Nylock 5/16"
2	2	01144500	HHCS 5/16" x 3/4"	37	2	335240	HHCS 1/2" x 1 3/4"
3	1	961714	Take-up Bar Right	38	6	330134	Hex Nut 1/2"
	1	961565	Take-up Bar Left	39	2	330142	Lock Washer 1/2"
4	8	01261700	Carriage Bolt 5/16" x 1 1/2"	40	1	03648300	Electric Motor 12V 1HP
5	2	151746	Head Bearing Slide Inner	41	1	331363	Hex Nylock 1/2"
6	2	151753	Head Bearing Slide Outer	42	2	02016400	Flat Washer 1/4"
7	4	03001500	Bearing 1" Flange	43	4	62751300	Roller Base
8	1	62212600	Head Roller	44	6	330894	Flat Washer 3/8"
9	1	62377700	Positive Connector Cable	45	1	16864100	Spout Pin Shaft
10	22	01158500	HHCS 3/8" x 1 1/4"	46	1	16865800	Spout Strap
11	5	16577910	Half Band 6 x 2	47	1	330928	Klik Pin 3/16"
12	1	82358300	Turn Buckle Half Band	48	1	17230400	Mount Plate Right
13	1	16497000	Adjustment Mount Plate	49	1	17229600	Mount Plate Left
14	4	82489600	Belt Cover Mount	50	1	84723600	Sprocket #40 36T 1"B
15	3	16578710	Half Band 6 x 4	51	1	17375700	Key 1/4" x 1"
16	1	82421900	Tail	52	1	03722600	Sprocket #40 11T 5/8" B
17	2	16427700	Skirt Board Plate	53	1	62379300	Tube Cable
18	2	16431900	Skirt Board Back	54	1	03251600	Solenoid Switch
19	8	334409	Carriage Bolt 5/16" x 3/4"	55	1	62371000	Chain #40 x 58 Complete
20	8	333542	HHCS 5/16" x 5/8"	56	1	82353400	Head Frame
21	1	16428500	Skirt Board Plate	57	1	606335	Decal Belt Training
22	1	16432700	Skirt Board Back	58	1	20531000	Belt Guard Plate
23	1	82117300	Tube Transport Lock	59	2	01150200	HHCS 1/4" x 1/2"
24	1	20489100	Belt Guard	60	1	336974	Klik Pin 5/16" w/ring
25	1	62705900	Tail Roller	61	1	335422	HHCS 1/2" x 2 1/2"
26	3	62213400	Head Rope Guide	62	1	81865800	Half Band Guard
27	1	62699400	Belt 8" x 35'-7 7/8"	63	22	01017300	HHCS 3/8" x 1"
28	11	01010800	HHCS 5/16" x 1"	64	2	331835	HHCS 1/4" x 1"
29	28	330811	Hex Nut 5/16"	65	4	332205	Hex Nut 1/4"
30	28	330845	Lock Washer 5/16"	66	4	330050	Lock Washer 1/4"
31	42	330035	Hex Nut 3/8"	67	2	571299	Cable Tie 8 1/2"
32	41	330043	Lock Washer 3/8"	68	1	62378500	Ground Wire
33	1	82111600	Tube Mount	70	2	01202100	Decal Speed King
34	1	17227000	Motor Mount Plate	71	1	80161300	Shaft End Guard
35	16	330852	Flat Washer 5/16"	72	4	330837	Hex Nylock 3/8"



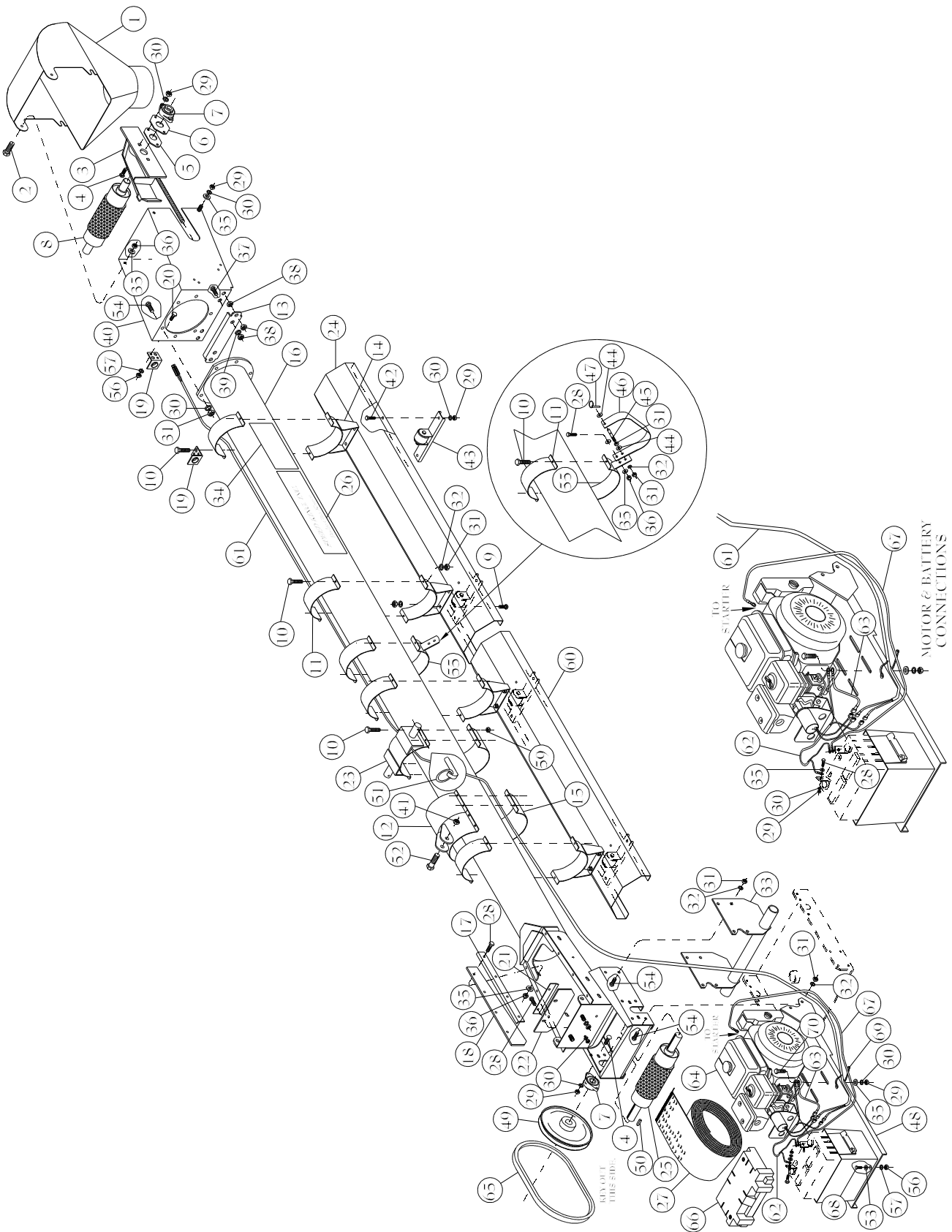
#82099300 - Hopper

Seed Box Tote Guard - Electric

Item	Qty	Part No.	Description
1	1	62382700	Chain Guard Assembly
2	1	82114000	Pivot Base
3	1	17306200	Guard Bracket
4	3	01017300	HHCS 3/8" x 1"
5	1	330837	Hex Nylock Nut 3/8"
6	2	330035	Hex Nut 3/8"
7	1	01489400	Thumb Screw 5/16" x 3/4"
8	1	01574300	Clip Nut 5/16" U-Type

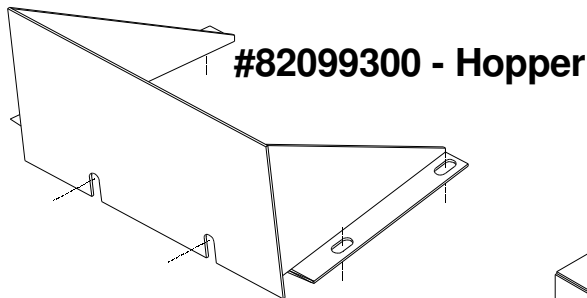


Seed Box Tote 15' Feed Tube Assembly Gas Drive



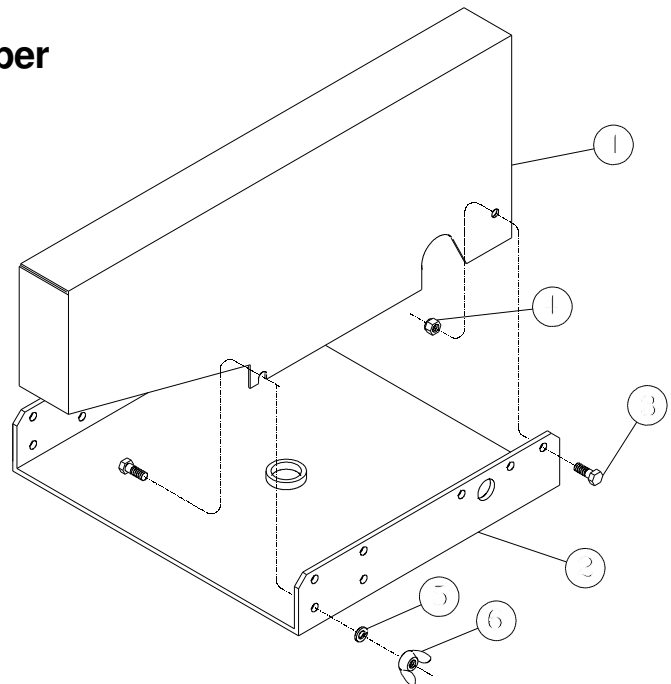
Seed Box Tote 15' Feed Tube Assembly Gas Drive

Item	Qty	Part No.	Description	Item	Qty	Part No.	Description
1	1	81842700	Spout	36	11	331611	Hex Nylock 5/16"
2	2	01144500	HHCS 5/16" x 3/4"	37	2	335240	HHCS 1/2" x 1 3/4"
3	1	961714	Take-up Bar Right	38	6	330134	Hex Nut 1/2"
	1	961565	Take-up Bar Left	39	2	330142	Lock Washer 1/2"
4	8	01261700	Carriage Bolt 5/16" x 1 1/2"	40	1	82353400	Head Frame
5	2	151746	Head Bearing Slide Inner	41	1	331363	Hex Nylock 1/2"
6	2	151753	Head Bearing Slide Outer	42	8	333542	HHCS 5/16" x 5/8"
7	4	03001500	Bearing 1" Flange	43	4	62751300	Roller Base
8	1	62212600	Head Roller	44	2	330894	Flat Washer 3/8"
9	8	334409	Carriage Bolt 5/16" x 3/4"	45	1	16864100	Spout Pin Shaft
10	22	01158500	HHCS 3/8" x 1 1/4"	46	1	16865800	Spout Strap
11	5	16577910	Half Band 6 x 2	47	1	330928	Klik Pin 3/16"
12	1	82358300	Turn Buckle Half Band	48	1	82501800	Motor Mount-Electric Start
13	1	16497000	Adjustment Mount Plate	49	1	04255600	Sheave 8 x 1 1B
14	4	82489600	Belt Cover Mount	50	1	17375700	Key 1/4" x 1"
15	3	16578710	Half Band 6 x 4	51	1	336974	Klik Pin 5/16" w/ring
16	1	82421900	Tail	52	1	335422	HHCS 1/2" x 2 1/2"
17	2	16427700	Skirt Board Plate	53	2	02016400	Flat Washer 1/4"
18	2	16431900	Skirt Board Back	54	18	01017300	HHCS 3/8" x 1"
19	3	62213400	Head Rope Guide	55	1	81865800	Half Band Guard
20	2	01150200	HHCS 1/4" x 1/2"	56	4	332205	Hex Nut 1/4"
21	1	16428500	Skirt Board Plate	57	4	330050	Lock Washer 1/4"
22	1	16432700	Skirt Board Back	58	1	80161300	Shaft End Guard
23	1	82117300	Tube Transport Lock	59	4	330837	Hex Nylock Nut 3/8"
24	1	20489100	Belt Guard	60	1	20531000	Belt Guard Plate
25	1	62705900	Tail Roller	61	1	62771100	Tube Cable
26	2	01202100	Decal Speed King	62	1	62773700	Power Lead Cable
27	1	62699400	Belt 8" x 35'-7 7/8"	63	1	62774500	Solenoid Ground Wire
28	13	01010800	HHCS 5/16" x 1"	64	1	62772900	Engine Assembly
29	18	330811	Hex Nut 5/16"	65	1	03752300	V-Belt B-44
30	18	330845	Lock Washer 5/16"	66	1	03753100	Battery Box Group U1
31	34	330035	Hex Nut 3/8"	67	1	03755600	Battery Cable
32	33	330043	Lock Washer 3/8"	68	2	01057900	HHCS 1/4" x 3/4"
33	1	82111600	Tube Mount	69	1	571299	Cable Tie 8 1/2"
34	1	606335	Decal Belt Training	70	4	335448	HHCS 5/16" x 1 1/2"
35	19	330852	Flat Washer 5/16"				

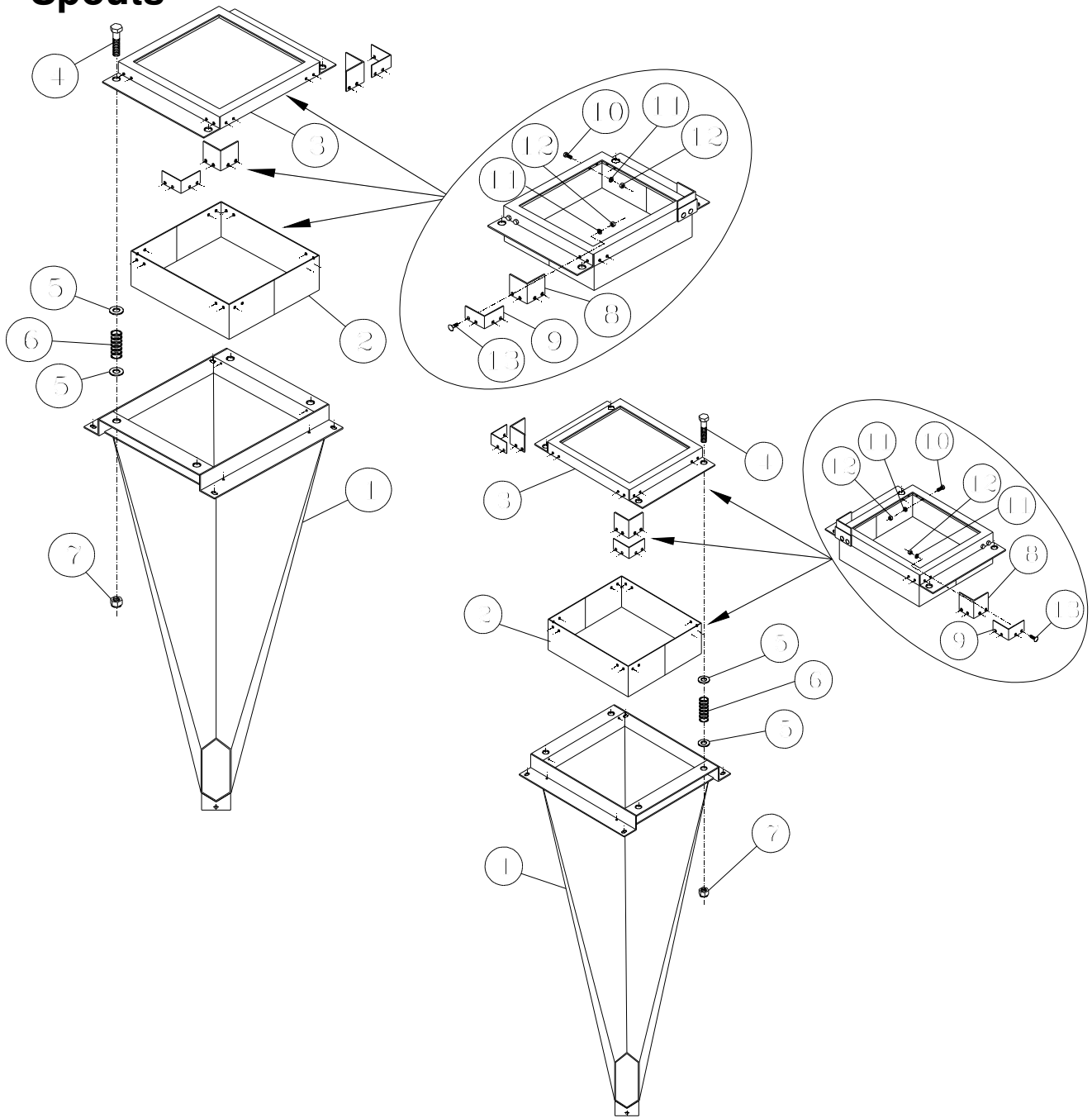


Seed Box Tote Guard - Gas

Item	Qty	Part No.	Description
1	1	62605100	Guard
2	1	82114000	Pivot Base
3	2	01017300	HHCS 3/8" x 1"
4	1	330837	Hex Nylock Nut 3/8"
5	1	330043	Lock Washer 3/8"
6	1	334847	Wing Nut 3/8"



Seed Box Tote Spouts



#62487400 Front Spout Assembly

#62486600 Rear Spout Assembly

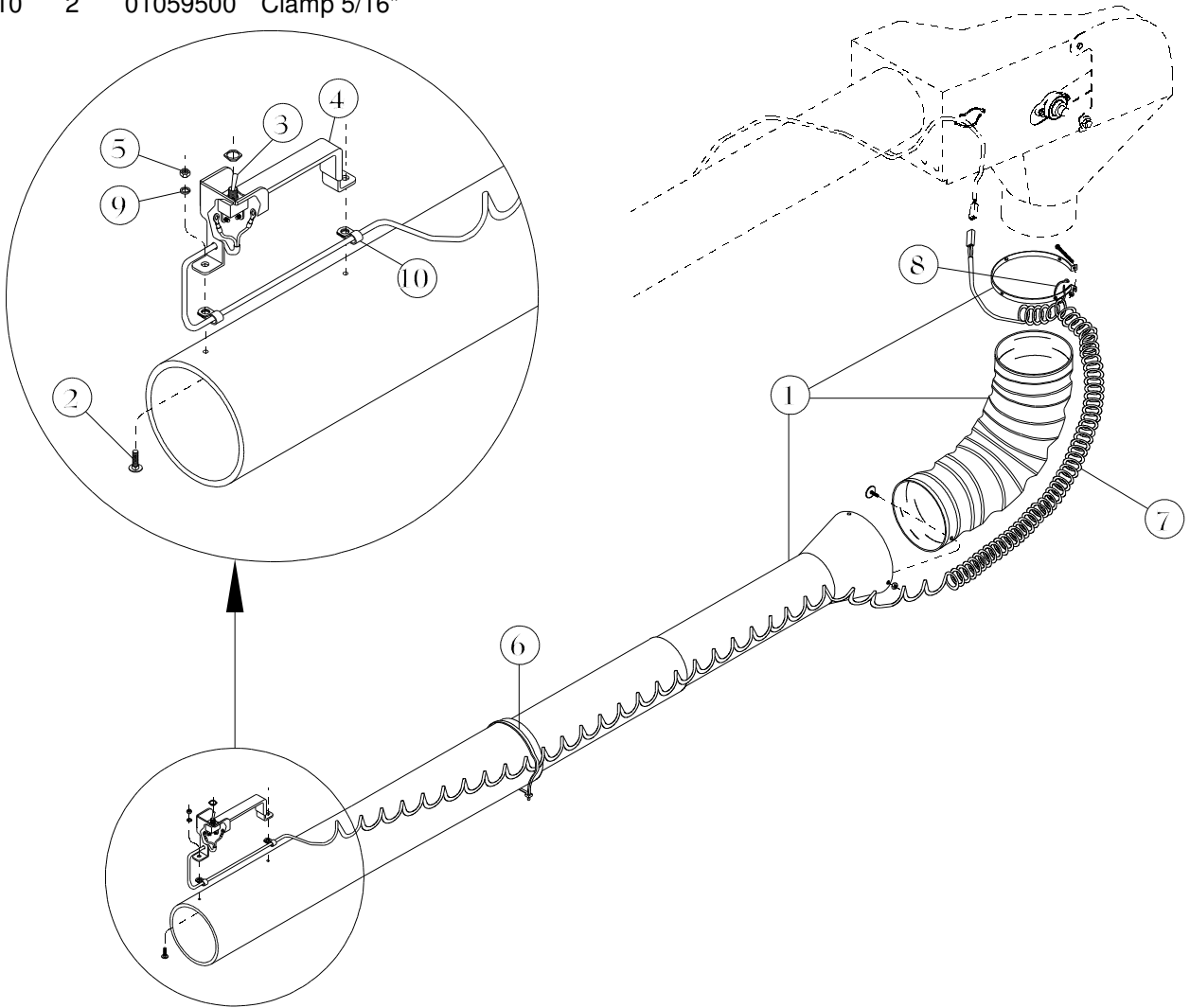
Item	Qty	Part No.	Description
1	1	82110800	Spout Front
2	1	82105800	Spout Frame Inside
3	1	82107400	Spout Frame Top
4	4	335620	HHCS 5/8" x 3"
5	8	330183	Flat Washer 5/8"
6	4	501031	Spring 7/64" x 2 3/4"
7	4	01572700	Hex Nylock Nut 5/8"
8	2	17252800	Deflector Skirtboard
9	2	17251000	Deflector Back-up
10	8	01057900	HHCS 1/4" x 3/4"
11	16	330050	Lock Washer 1/4"
12	16	332205	Hex Nut 1/4"
13	8	336636	Carriage Bolt 1/4" x 3/4"

Item	Qty	Part No.	Description
1	1	82109000	Spout Rear
2	1	82105800	Spout Frame Inside
3	1	82107400	Spout Frame Top
4	4	335620	HHCS 5/8" x 3"
5	8	330183	Flat Washer 5/8"
6	4	501031	Spring 7/64" x 2 3/4"
7	4	01572700	Hex Nylock Nut 5/8"
8	2	17252800	Deflector Skirtboard
9	2	17251000	Deflector Back-up
10	8	01057900	HHCS 1/4" x 3/4"
11	16	330050	Lock Washer 1/4"
12	16	332205	Hex Nut 1/4"
13	8	336636	Carriage Bolt 1/4" x 3/4"

Seed Box Tote Flexible Tube

#62369400 - Flexible Spout Assembly

Item	Qty	Part No.	Description
1	1	01526300	Telescoping Feed Spout - 3 piece
2	2	01065200	Bolt 1/4-20 x 1"
3	1	03723400	Switch
4	1	62748900	Handle Assembly
5	2	332205	Hex Nut 1/4"
6	1	571281	Cable Tie 24"
7	1	62380100	Retractable Wire Assembly
8	1	571299	Cable Tie 8 1/2"
9	2	330050	Lock Washer 1/4"
10	2	01059500	Clamp 5/16"





P.O. Box 1438

Dodge City, Kansas 67801

(620) 227-7106
