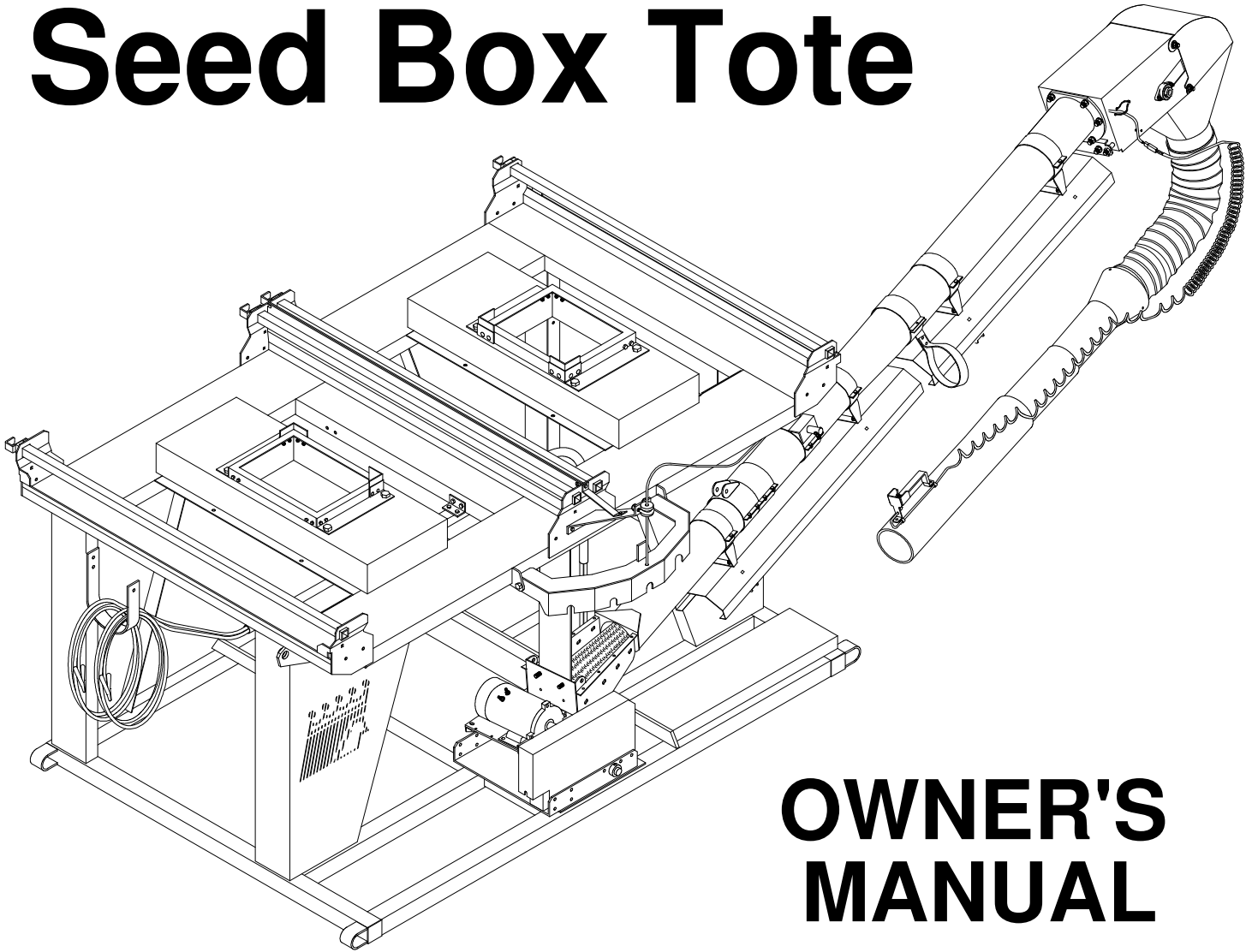




Seed Box Tote



OWNER'S MANUAL

OPERATION • MAINTENANCE • REPAIR PARTS

#17392200 (2008)

Table of Contents

Warranty Information	1	Repair Parts	
Operator Qualifications	2	Stand - Electric	16-17
Safety and Warnings	3-6	Stand - Gas	18-19
Fuel Valve	7	Feed Tube - Electric	20-21
Assembly	7-8	Hopper	21
Loading Seed in Tote Boxes	9	Guard - Electric	21
Wiring Diagram	10	Feed Tube - Gas	22-23
Belt Assembly	11	Hopper	23
Operation, Maintenance, & Belt Training	12-13	Guard - Gas	23
		Spouts	24
Dimensions	14-15	Flexible Tube	25
		Engine Assembly	26-27
		Remote Control	27

Identification

Your Seed Tender is identified by a Serial Number and Model Number. Record these numbers in the spaces provided in this manual and refer to them when ordering parts or requesting service.

Serial Number	Model Number
---------------	--------------

Warranty

CrustBuster/Speed King, Inc. of Dodge City, Kansas, warrants consumer products, so far as the same is of our own manufacture, against defects in material and workmanship under normal and reasonable use for a period of one (1) year after date of delivery to the original purchaser. Our obligation under this warranty is limited, however, to furnishing a replacement part for a defective part, or at our option to repair the defective parts without charge, either method F.O.B. our works, provided the consumer gives CrustBuster/Speed King, Inc. written notice within ten (10) days after said part appears to be defective and affords CrustBuster/Speed King, Inc. an opportunity to inspect. Unless otherwise expressly agreed to by CrustBuster/Speed King, Inc., the consumer shall bear the expense of installation.

CrustBuster/Speed King, Inc. will not be liable for consequential damages where the loss is commercial, including but not limited to loss of profit, delays or expenses.

This warranty sets forth the extent of our liability. The foregoing is in lieu of all other warranties, expressed or implied, including any warranties that extend beyond the description of the product.

Operator Qualifications

Operation of this Seed Tote shall be limited to competent and experienced persons. In addition, anyone who will operate or work around this equipment must use good common sense. In order to be qualified, he or she must also know and meet all other requirements, such as:

1. Some regulations specify that no one under the age of 16 may operate power machinery. It is your responsibility to know what these regulations are in your area or situation.
2. Current OSHA regulations state in part: "At the time of initial assignment and at least annually thereafter the employer shall instruct EVERY employee in the safe operation of servicing of all equipment with which the employer is, or will be involved."
3. Unqualified persons are to STAY OUT of the work area.
4. A person who has not read and understood all operating and safety instructions is not qualified to operate the machinery.



FAILURE TO READ THIS SEED TENDER MANUAL AND ITS SAFETY INSTRUCTIONS IS A MISUSE OF THE EQUIPMENT.



Sign Off Sheet

As a requirement of OSHA, it is necessary for the employer to train the employee in the safe operation and safety procedures with this Seed Tender. We include this sign off sheet for your convenience and personal record keeping.

DATE	EMPLOYER	EMPLOYER'S SIGNATURE



BE ALERT!

Your Safety is involved.

General Safety Statement



WATCH FOR THIS SYMBOL. IT POINTS OUT IMPORTANT SAFETY PRECAUTIONS. IT MEANS "ATTENTION — BECOME ALERT!"

YOUR SAFETY IS INVOLVED.

It is your responsibility as an owner, operator, or supervisor to know and instruct everyone using this Seed Tender at the time of initial assignment and at least annually thereafter, of the proper operation, precautions, and work hazards which exist in the operation of this Seed Tender in accordance with OSHA Regulations.

Safety Is No Accident

The following safety instructions, combined with common sense, will save your equipment from needless damage and the operator from unnecessary exposure to personal hazard. Pay special attention to the caution notes in the text. Review this manual at least once each year with new and/or experienced operators.



1. Read and understand the operator's manual before operating this Seed Tender. Failure to do so is considered a misuse of the equipment.
2. Make sure Seed Tender is secure before operating.
3. Always keep children away from Seed Tender when operating.
4. Make sure everyone that is not directly involved with the operation is out of the work area before beginning the operation.
5. Make sure all safety devices, shields, and guards are in place and are functional before beginning the operation.
6. Shut off power to adjust, service, or clean.
7. Keep hands, feet, and clothing away from moving parts. It is a good idea to remove all jewelry before starting the operation.
8. Visually inspect the Seed Tender periodically during operation for signs of excessive vibration, loose fasteners, and unusual noises.
9. Before transportation unit, make sure tube assembly is locked into place and safety strap is on and secure.
10. Keep box tote on level surface.

Safety Decals

REMEMBER: If Safety signs have been damaged, removed, become illegible or parts replaced without decals, new decals must be applied. New decals are available from your authorized distributor or factory. Individual decals shown below.

#05326400

WARNING

TIP OVER HAZARD.

TOP HEAVY LOAD. USE A TRAILER OR A VEHICLE WITH ADEQUATE HAULING CAPABILITY.

#05326400

#05303300

CAUTION

1. Read and understand the operator manual before operating.
2. Keep all safety shields and devices in place.
3. Make certain everyone is clear before operating machine.
4. Keep hands, feet and clothing away from moving parts.
5. Shut off power to all electrical services on site.
6. Make sure machine is secured before operating.
7. Disconnect power before connecting wires on board.
8. Make certain electric wires are grounded.

#05315700

CAUTION

PINCH POINT

#05327200

WARNING

DO NOT PLACE
HAND INTO CLEAN
OUT HOLE.

#05327200

#05312400

CAUTION

KEEP ALL SHIELDS IN PLACE

#05325600

CAUTION

SECURE TUBE
WITH SAFETY
STRAP BEFORE
TRANSPORTING.

#05328000

DANGER

SAFETY HAZARD
DO NOT ENTER
ROTATING COMPONENTS
INSIDE HOPPER.



Danger

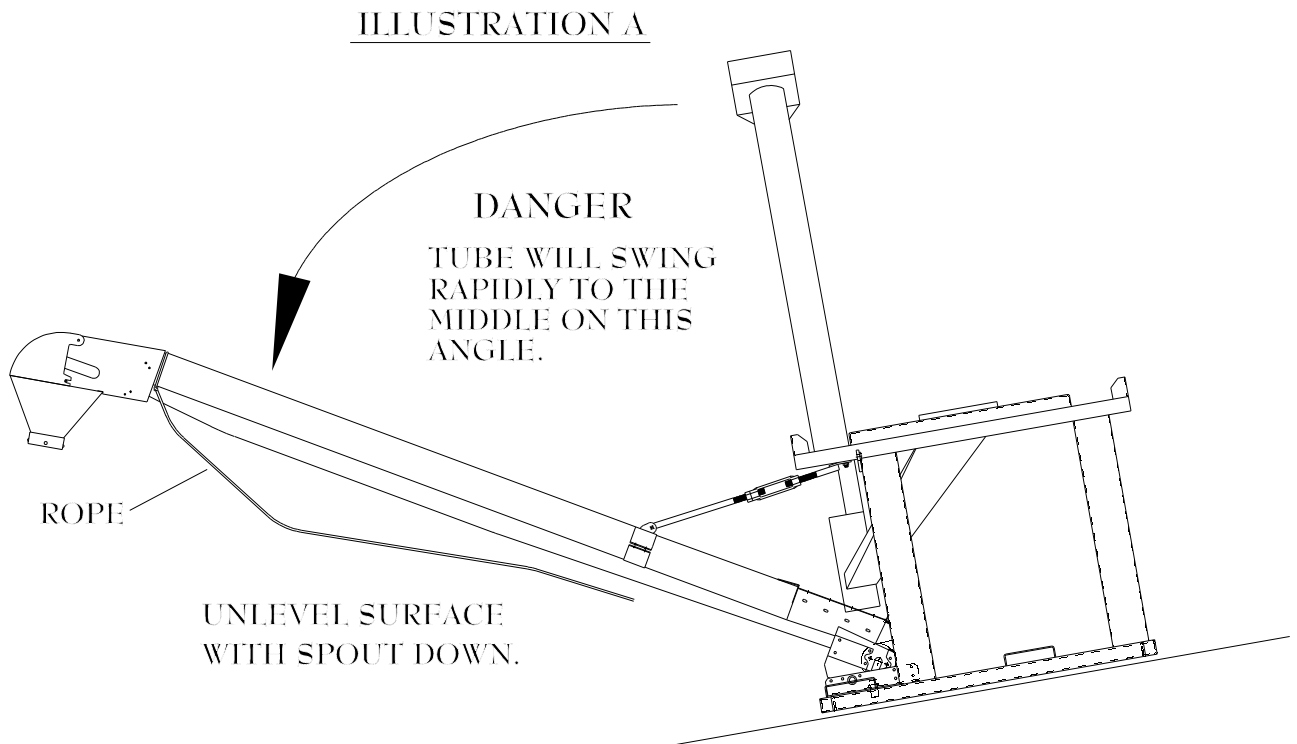
**BE ALERT! YOUR PERSONAL SAFETY IS INVOLVED.
ALWAYS PARK TENDER ON LEVEL SURFACE TO UNLOAD.**

Before releasing safety strap that secures tube assembly, make sure tender is sitting on a level surface.

If parked on an unlevel surface, and the tube assembly is not restrained, it will swing rapidly and out of control to one side or the other.

The rope attached to the tube is to assist in guiding the tube. If tube is swinging out of control, the rope may not control the tube.

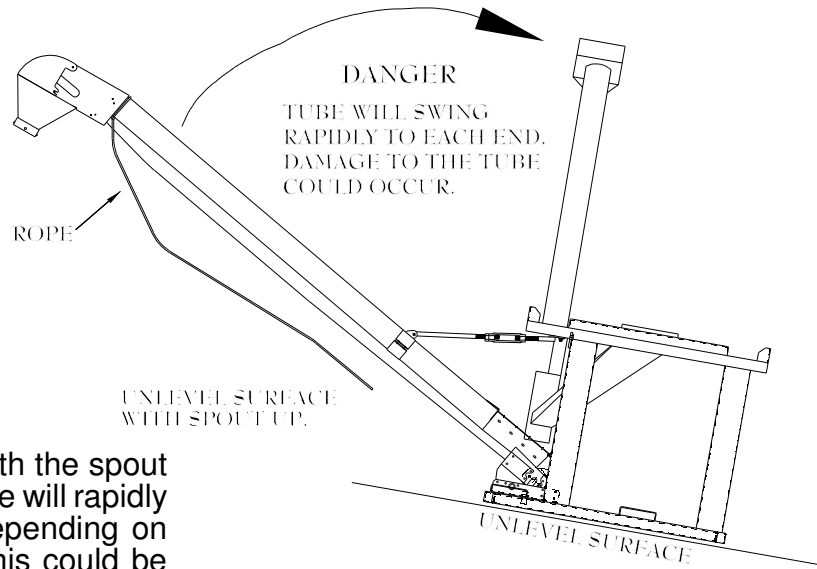
If parked on an unlevel surface with the spout side down, (See *illustration A*) the tube will rapidly swing out.





Danger

ILLUSTRATION B

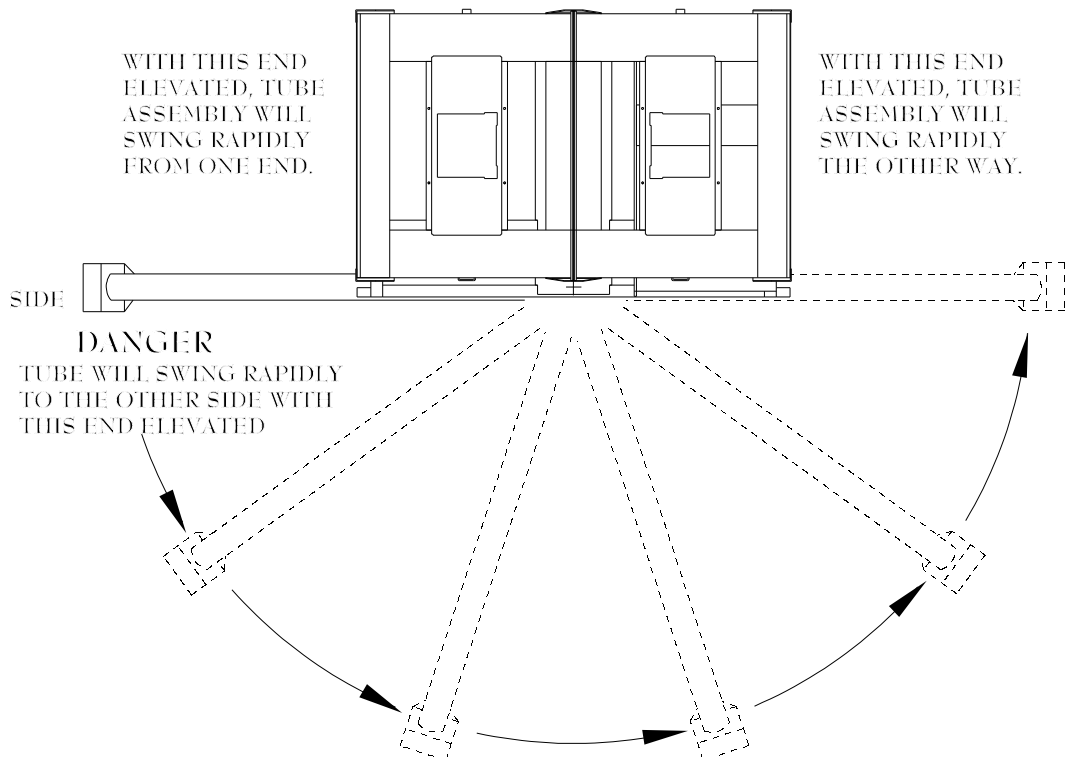


If parked on an unlevel surface with the spout side up, (See *illustration B*) the tube will rapidly swing to one end or the other depending on which side the gravity pulls it. This could be very hazardous for anyone standing in its path. Be very cautious of situation.

If parked on an unlevel surface with the spout side up, (See *illustration C*) the tube will rapidly swing from one end to the other.

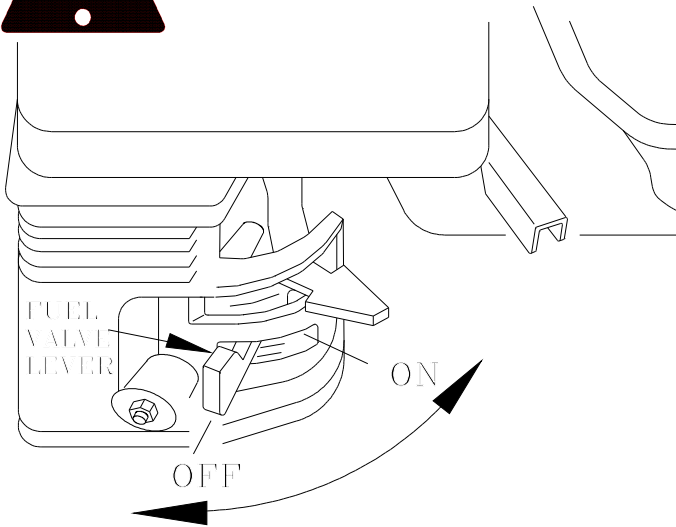
This could be very hazardous for anyone standing in its path. Be very cautious of this situation. This could also cause damage to the tube assembly.

ILLUSTRATION C





CAUTION



FUEL VALVE

When engine is not in use, leave the fuel valve lever in the OFF position to prevent

- carburetor flooding
- fuel in the oil crank case because of transporting vibrations
- the possibility of fuel leakage.

See engine owner's manual to help you avoid other damage to your engine.

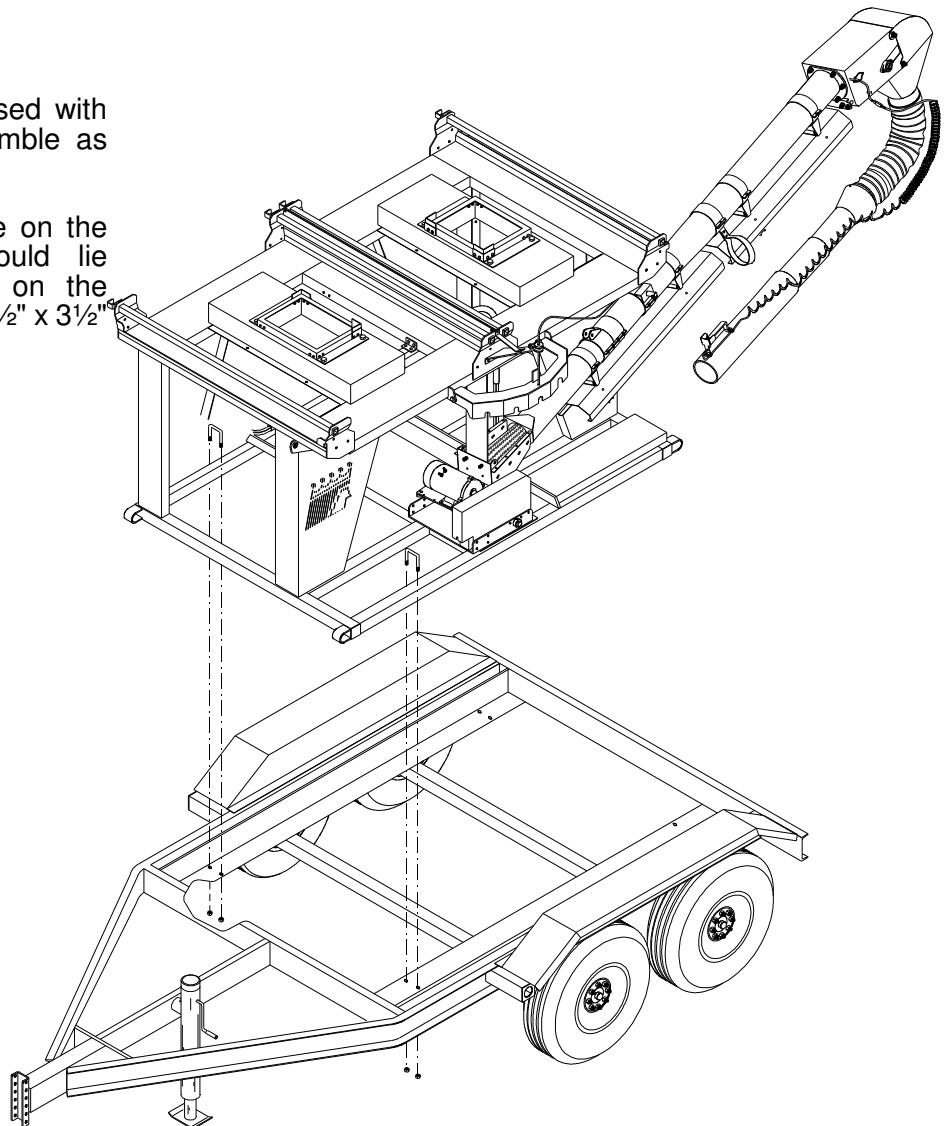
NOTE: CrustBuster recommends fuel valve be shut off and the motor run completely out of fuel before transporting.

Assembly

If trailer has been purchased with the Seed Box Tote, assemble as follows:

Center the Seed Box Tote on the trailer. The tubes should lie between mounting holes on the trailer. Attach using $\frac{1}{2}$ " x $2\frac{1}{2}$ " x $3\frac{1}{2}$ " u-bolts and $\frac{1}{2}$ " nylock nuts.

Reference Illustration.



Assembly

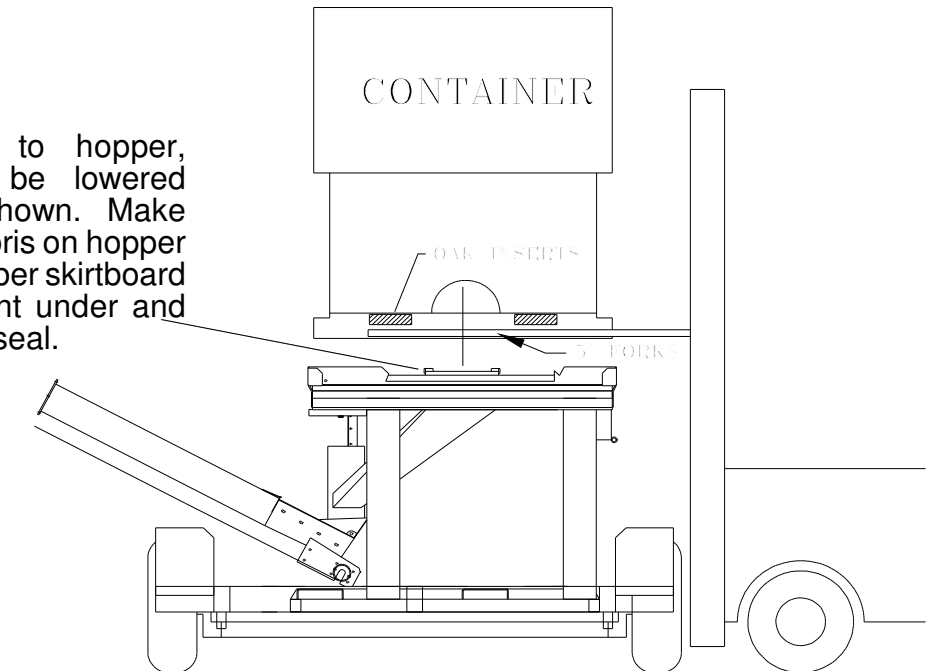


CAUTION

ALWAYS LIFT THE CONTAINER FROM THE BOTTOM. NEVER USE STRAPS OR LIFT BY TYING ANYTHING TO THE SIDES OF THE CONTAINER. REQUIRES MINIMUM 3000 LB. FORKLIFT TO PICK UP FULL CONTAINER. OAK INSERTS, LOCATED IN THE BASE OF THE CONTAINER, REDUCE LIPPAGE ON FORKLIFT FORKS AND PROVIDE STRUCTURAL SUPPORT. RECOMMENDED FORKS ON FORKLIFT TO BE AT LEAST 5 FEET TO MAKE SURE FORKS EXTEND IN AND REST ON OAK INSERTS.

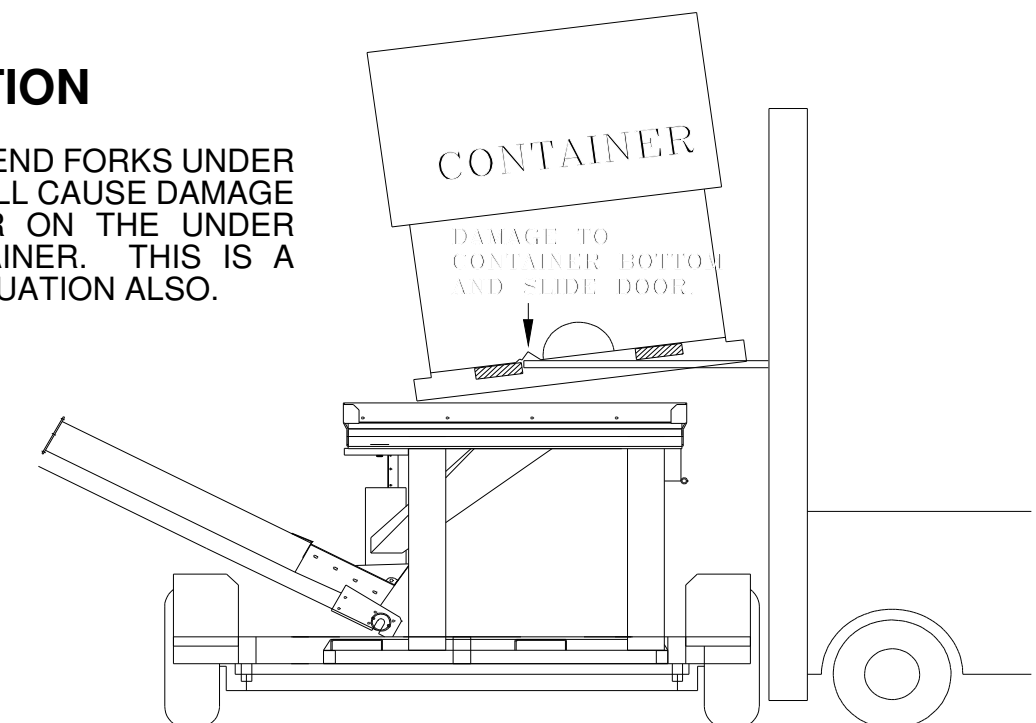
NOTE:

For proper seal to hopper, container should be lowered straight down as shown. Make sure there is no debris on hopper top. Make sure rubber skirtboard deflector is not bent under and preventing a good seal.



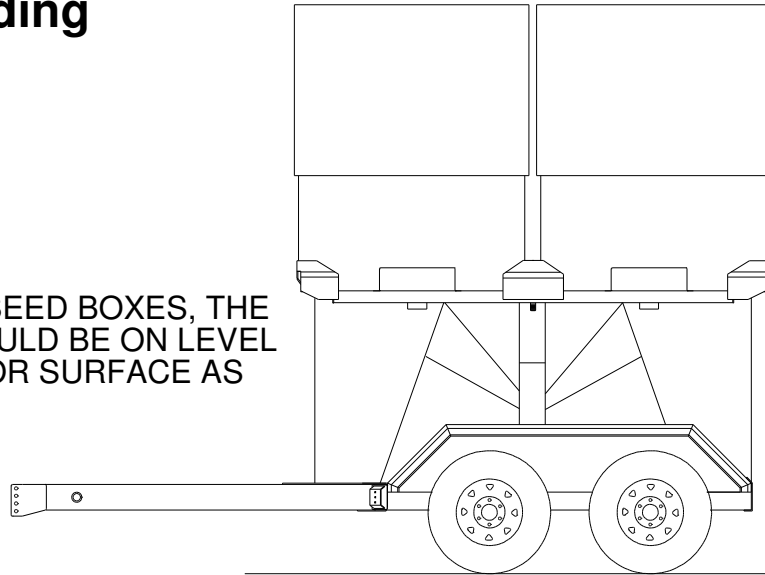
CAUTION

FAILURE TO EXTEND FORKS UNDER OAK INSERTS WILL CAUSE DAMAGE TO SLIDE DOOR ON THE UNDER SIDE OF CONTAINER. THIS IS A DANGEROUS SITUATION ALSO.



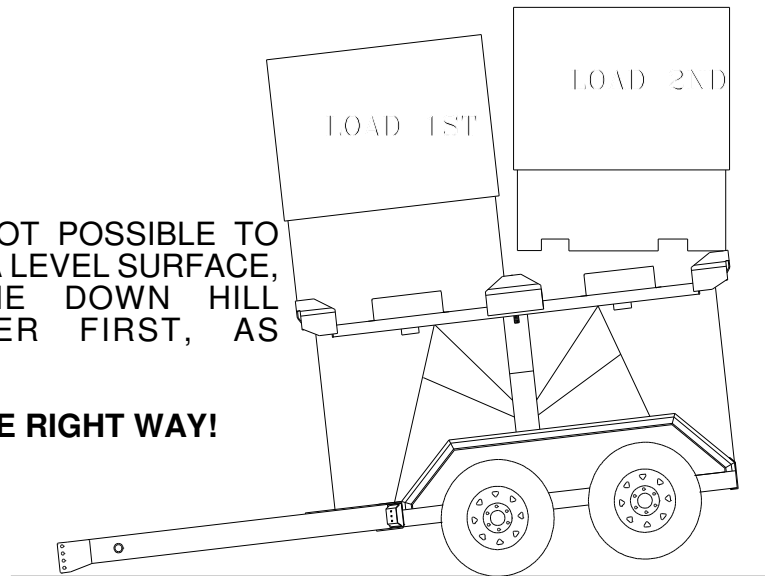
Seed Box Loading

TO LOAD SEED BOXES, THE TOTE SHOULD BE ON LEVEL GROUND OR SURFACE AS SHOWN.



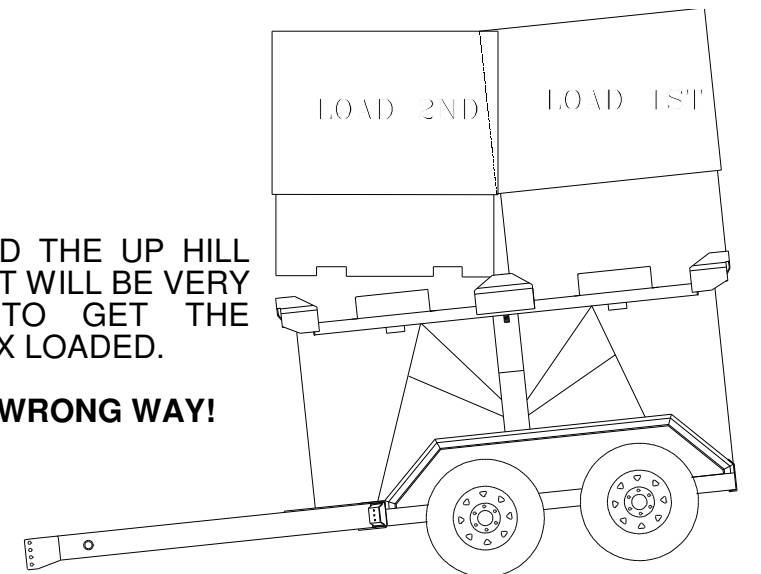
IF IT IS NOT POSSIBLE TO LOAD ON A LEVEL SURFACE, LOAD THE DOWN HILL CONTAINER FIRST, AS SHOWN.

THIS IS THE RIGHT WAY!

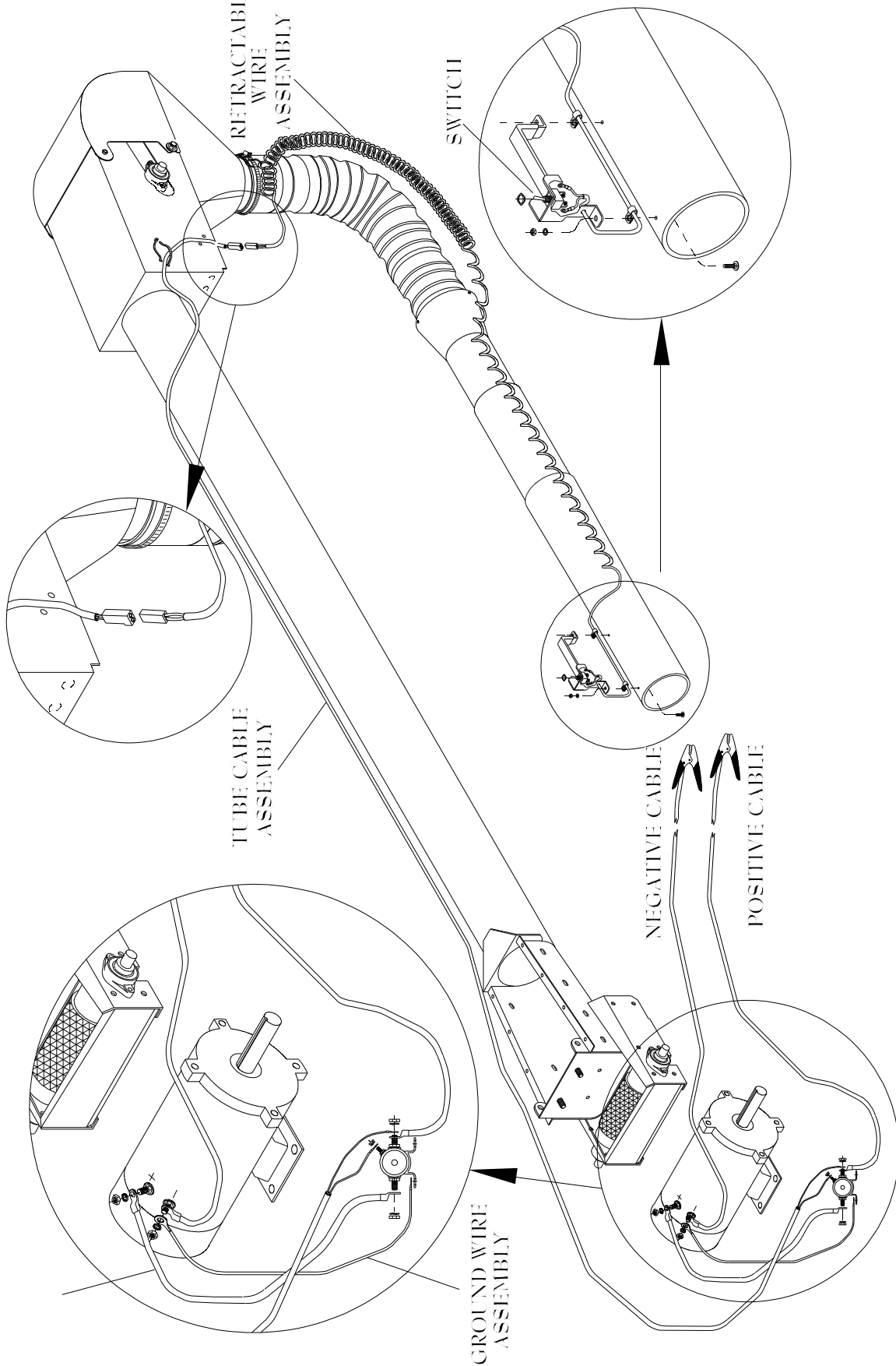


IF YOU LOAD THE UP HILL BOX FIRST, IT WILL BE VERY DIFFICULT TO GET THE SECOND BOX LOADED.

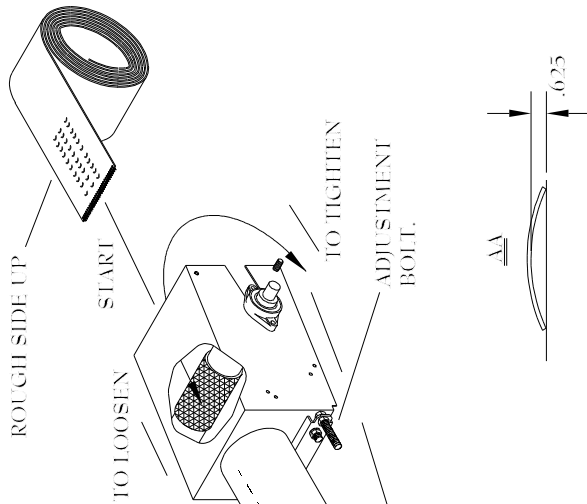
THIS IS THE WRONG WAY!



Wiring Diagram For Electric Units

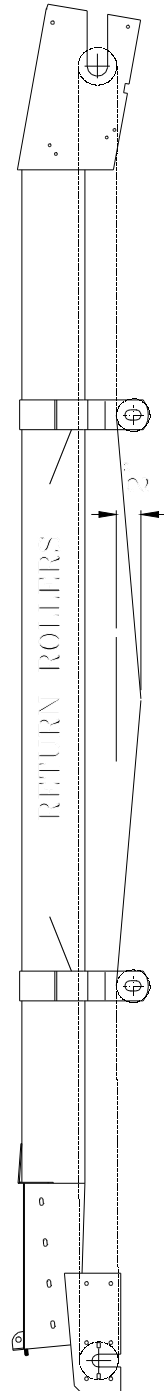


Belt Assembly



BELT TIGHTENING INSTRUCTIONS

Belt should be tightened before you train the belt. Tightening the belt is done on the head roller by tightening the take up bars evenly. Belt is tight when applying 25 lbs. of force, centered between the return rollers, there is no more than 2 inches of deflection.

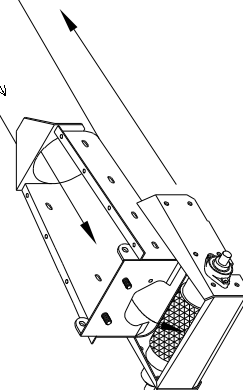
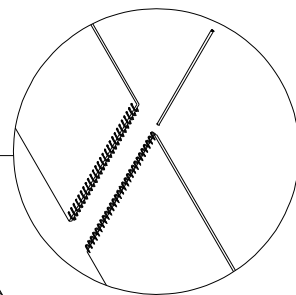


BELT ASSEMBLY INSTRUCTIONS

At the start point, see view of head and tail assembly. Drop belt over the top of head roller and gravity feed belt down the tender tube to the bottom. Guide the belt over the top of the tail roller. Make sure rough side is UP and the smooth side is DOWN against the inside of wall of the tube.

Route both ends around head and tail rollers and over all return idlers mounted under the tube. Slide belt forward or back through tube so the ends of the belt meet at a convenient location between return idlers to facilitate joining.

Align and interlace belt and clipper lacings. Slip splice pin (Plastic covered cable) through clipper lacings to secure.



Pre-Operation Check List

1. Check all bearings for proper lubrication.
2. Check the tube for foreign material.
3. Check belt for proper tension.
4. Start unit and check tender belt alignment while unit is empty.

BELT CARE

It is suggested that the unit be run every two to three days or more often if possible. This tends to keep the belt alive and stops any forming of the belt to the curvature of the tube while the unit is not in use.

NOTE: Belt may deteriorate if not in use and exposed to weather conditions for any prolonged period of time.

Operation Sequence

1. Check drive chain for proper tension.
2. Make sure tender belt is properly tensioned.
3. Allow unit to run empty for a few minutes to flex tender belt.
4. Check tender belt for proper alignment.
5. Before shutting power off, be certain head and tail unit is empty.

STORAGE

Temporary Storage

1. Relieve tension on tender belt.
2. Store all belt equipment in a dry place. If equipment cannot be stored out of the weather, cover engine and mechanical parts with waterproof material.

Prolonged Storage

1. Remove all belts and store in a cool, dark, dry place.
2. Wash tender belt thoroughly.
3. Wash tender tube both inside and out.
4. Lubricate all bearings.
5. Store in a dry shelter.

Maintenance

Preventive maintenance is the key to the long life of any mechanical device.

Careful and systematic inspection of the Seed Tender will result in maximum, trouble-free service.

BELT REPLACEMENT

To replace the belt, cut it into and hand rotate the head roller until belt has been removed. Install appropriate belt as outlined in assembly instructions.

HEAD ASSEMBLY TAKE-UP

After extended use, the tender belt may stretch to the point that there is not sufficient take-up in the head assembly to tighten it. Obtain additional take-up by cutting a 6" to 8" section from the belt. A new splice lacing may be ordered from your CrustBuster/Speed King distributor or from the factory.

PERIODIC CLEAN-OUT

Due to the characteristics of certain materials, residue sometimes collects between the tender belt and the tube. Check the unit periodically for any material build up in this area. If residue appears excessive, remove the tender belt and thoroughly wash the belt and tube. Allow belt and tube to dry before reinstalling the belt.

When the tender is not being used, secure belt to the tube to prevent belt from flopping in the wind, possibly breaking return idlers or ripping belt.

LUBRICATION

All bearings which are fitted with grease zerks should be lubricated at the conclusion of each operating day. Before greasing the bearings, make certain the zerks are free of dirt, otherwise this will be passed into the bearing race. If the unit will be out of service for a period of time, purge the bearings.

BELT TRAINING PROCEDURE

A tender belt correctly installed and trained will run straight and true. The belt must run centered on all terminal rollers, take-up rollers, and return idlers throughout the entire belt length.

Incorrect installation and training can result in severe edge damage, material spillage, material leakage through the skirt rubber at the loading point, and excessive power demands. Material spillage is the usual reason for belt carcass ruptures and pulley cover gouging and stripping, while leakage at the skirt rubber results in excessive conveyor cover wear under the skirts.

Maintenance - (cont'd)

ALIGNMENT

All rotating parts -head roller, tail roller, and return idlers- must be at a 90 degree angle to the direction of belt travel, must be level, and the midpoint of each centered on a line when properly aligned.

Alignment is checked by running a tight wire from the center of head roller to center of the tail roller. Level all rotating parts. If a part is not level, the belt will run to the lower side.

BELT SPLICING

A belt must not run out at the splice area. Runout will occur if the belt is not cut square or splice is not installed square.

Operation

1. Prior to the start-up, check to see that belt is free from any objects that would bind or tear.
2. On starting for the first time, with no load on belt, apply power for a few seconds only to see that the tender belt is well centered in the tube and on the return.
3. It should be noted at this time that too much tension on the tender belt will make adjustment or training much more difficult, shorten the life of the belt, and waste power. The belt should be tensioned tight enough so the drive roller does not slip. The belt is tight when applying 25 pounds of force, centered between the return rollers, there is no more than 2 inches of deflection.

BELT TRAINING

It is essential that the tender belt be properly trained at all times. For this reason, all rotating parts should always be at right angles to the tender belt.

Slight adjustment of roller shafts may be required to keep belts centered on them i.e., if the belt runs to one side of the roller - apply more tension to this side of the belt by advancing the roller shaft on this side. This can be done on the head section as long as adjustment bolt does not vary more than 1/4". If it does, and belt will still not center on both rollers, the tail section is probably out of square.

To square tail section roller, even out the head roller until adjustment bolts are equal. On tail section, loosen bearing bolts on opposite side the belt is off. **CAUTION: LOOSEN BEARING BOLTS JUST ENOUGH SO IT TAKES A BLOCK OF WOOD AND A SMALL HAMMER TO MOVE THE BEARING.** To adjust tail section, 1/32" in most cases, will move the belt. Tail roller bearings only have about a 1/16" to 3/32" movement total. Tighten the bearing, and go to the head section and retrain the belt.

If the belt tends to veer to one side of the return strand, the belt can be centered by "knocking" ahead (in the direction of belt travel) the end of the return idler to which the belt runs. A belt correctly installed will usually train well both empty and loaded, except as noted:

1. One or more rotating parts not in alignment.
2. Belt tensions in some part of system (usually at tail section) are below minimum recommended.
3. Belt not loaded centrally.

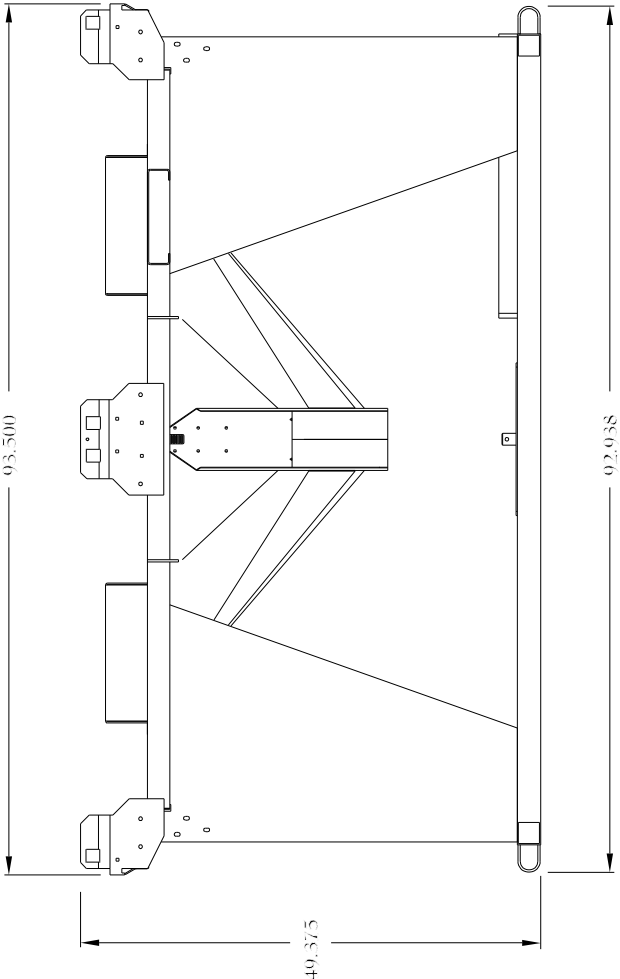
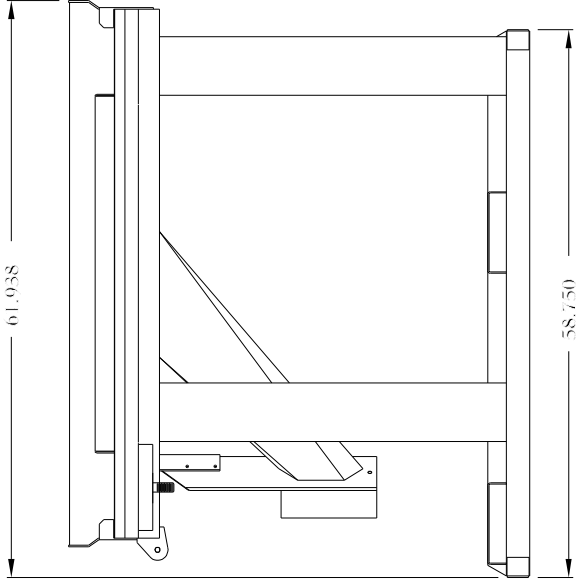
When a belt is initially started, it should be jogged around the system to determine if a major runout occurs which could damage belt and belt edges. If runout occurs at some point of the system, the reason is usually a return idler or roller out of alignment before the runout. Alignment should be rechecked before restarting.

After the belt can be safely run without damage, final training should begin with the head roller. The belt must enter the head roller in the center without movement from side to side. If the belt is not centered on the tail pulley, the return strand of belt should be observed for any section which is not centered on the return idlers. If the belt is not centered at some point, move return idlers starting before this point to correct centering of belt. Movement of idler bracket should be gradual and only 1/16" to 1/8" remembering that the belt will move in the direction that it first contacts the idler. The same corrective action should be taken at the tail roller.

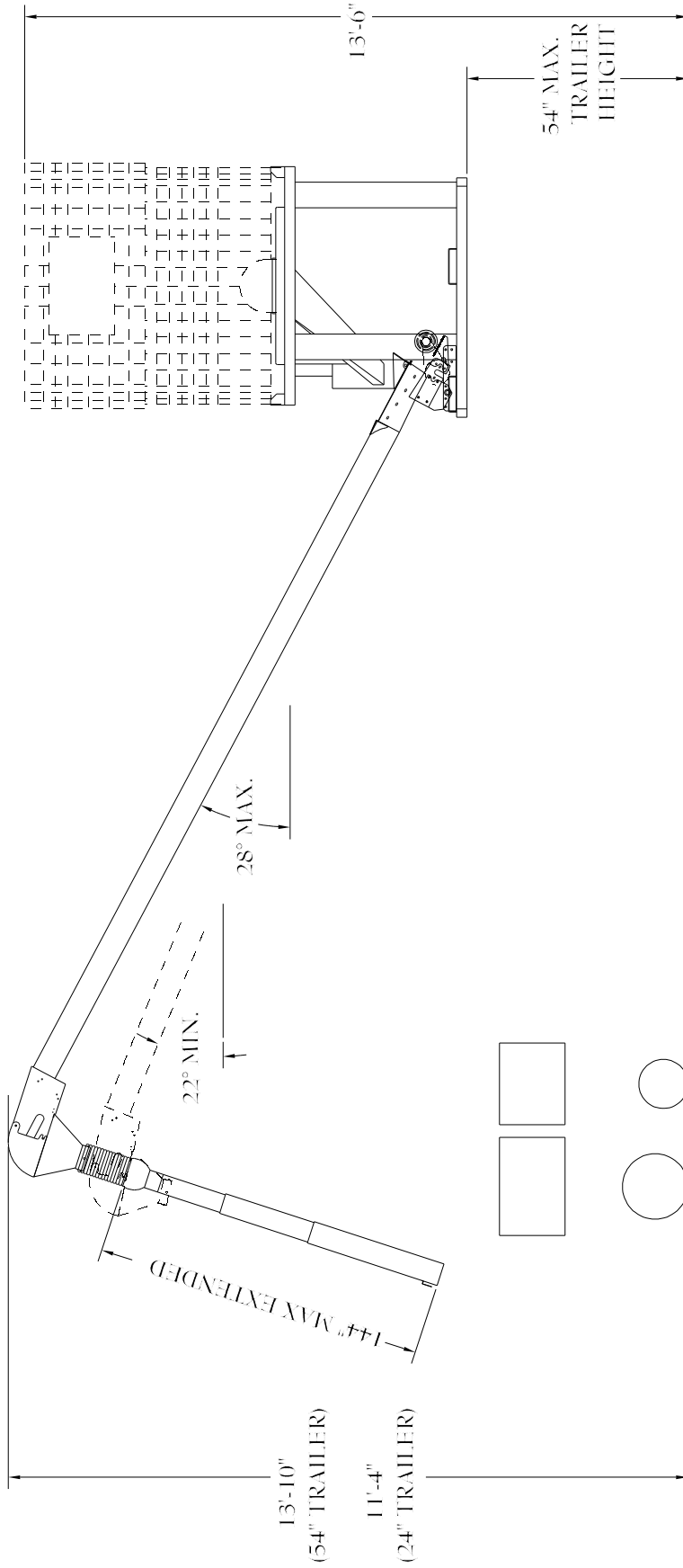
After the belt is trained empty, the belt should be trained with a load. The take-up adjustments are made to prevent belt slip and keep tensions at all points above minimums recommended when belt is operating with a load.

If slip occurs under load, additional belt tension should be adjusting the take-up only enough to prevent slip from occurring under load, and when started with a load.

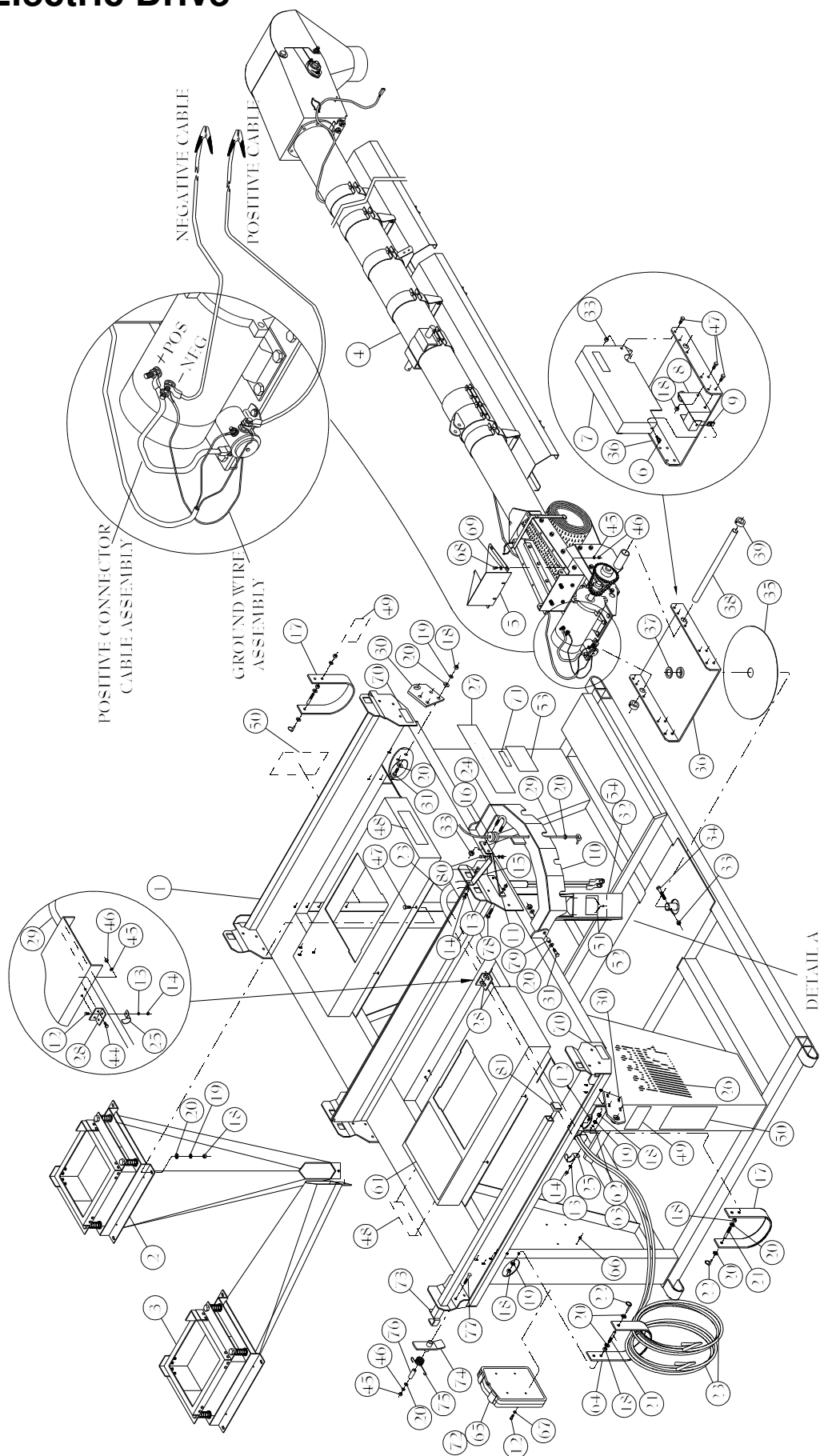
Seed Box Tote Dimensions



Seed Box Tote Dimensions

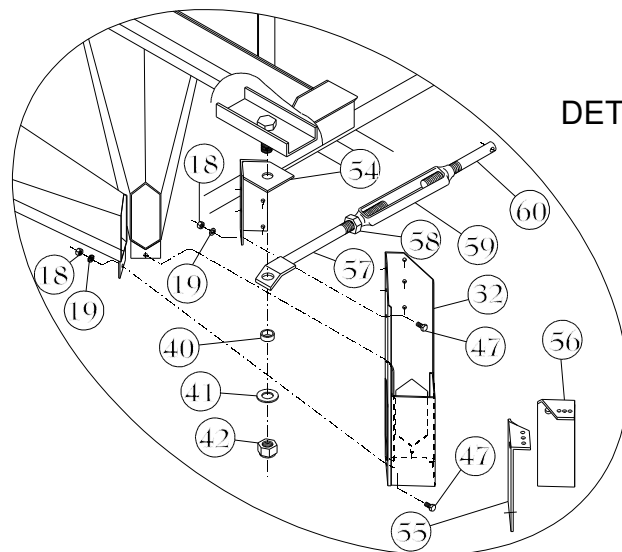


Seed Box Tote Stand - Electric Drive



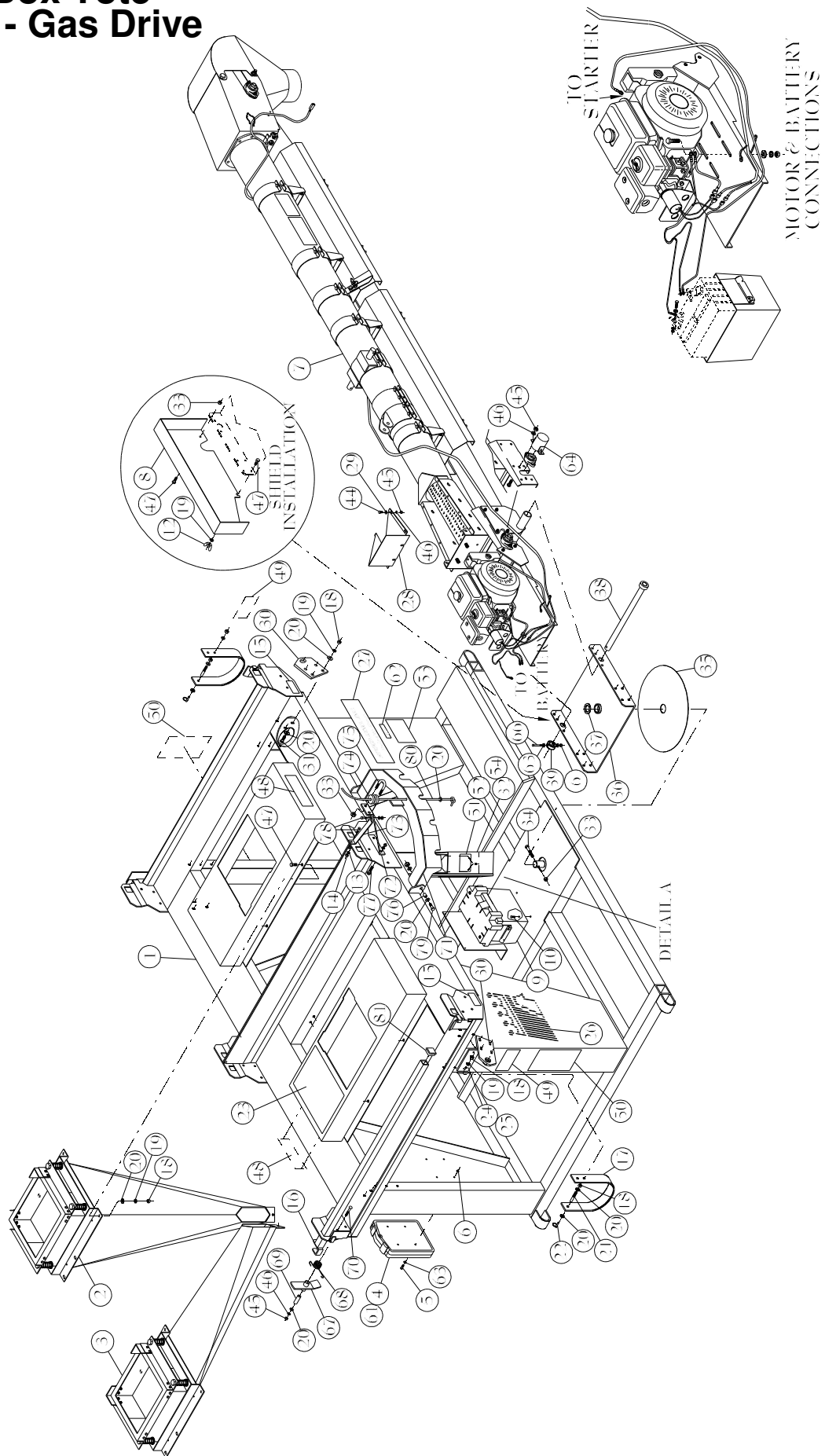
Seed Box Tote Stand - Electric Drive

Item	Qty	Part No.	Description	Item	Qty	Part No.	Description
1	1	82528100	Frame	41	1	330407	Flat Washer 1"
2	1	62486600	Spout Rear	42	1	330597	Hex Nylock Nut 1"
3	1	62487400	Spout Front	44	2	01144500	HHCS 5/16" x 3/4"
4	1	62766100	15' Feed Tube Assembly	45	12	330845	Lock Washer 5/16"
5	1	82099300	Tail Hopper	46	12	330811	Hex Nut 5/16"
6	1	01489400	Thumb Screw 5/16" x 3/4"	47	19	01017300	HHCS 3/8" x 1"
7	1	62382700	Chain Guard	48	2	05310800	Decal Debris
8	1	17306200	Guard Bracket	49	2	05325600	Decal Safety Strap
9	1	01574300	Clip Nut 5/16" U-Type	50	2	05326400	Decal Warning Tip-Over
10	1	82518200	Index	51	1	05327200	Decal Warning Clean-out
11	1	20608600	Index Mount Plate	52	1	05328000	Decal Danger Hopper
12	6	01057900	HHCS 1/4" x 3/4"	53	1	05303300	Decal Warnings
13	8	330050	Lock Washer 1/4"	54	1	82133000	Spout Attachment
14	8	332205	Hex Nut 1/4"	55	1	17385600	Spout Gate
15	1	20609400	Index Brace Plate	56	1	17387200	Spout Gate
16	1	03651700	Insulator	57	1	82527300	Turnbuckle Bracket
17	2	17634700	Carrier Strap Long	58	1	332288	Jam Nut 1"
18	34	330035	Hex Nut 3/8"	59	1	06814800	Turnbuckle 1" x 8 3/4"
19	29	330043	Lock Washer 3/8"	60	1	17287400	Turnbuckle Pin 1" x 10"
20	35	330894	Flat Washer 3/8"	61	1	606327	Decal Loading Tote Box
21	3	16864100	Pin 3/8" x 2 1/2"	62	1	00694000	Serial Plate
22	3	330928	Klik Pin 3/16"	63	2	600577	Drive Screw
23	1	62375100	Battery Cable	64	1	16865800	Belt 2" x 24"
24	1	01034800	U-bolt 3/8" x 1 1/4" x 2 1/4"	65	1	607416	Manual Pak
25	2	03102100	Conduit Strap 1"	66	4	330522	Nylock Nut 1/4"
26	2	01113000	Decal "Speed King Head"	67	4	02016400	Flat Washer 1/4"
27	2	01202100	Decal "Name"	68	4	01010800	HHCS 5/16" x 1"
28	1	17284100	Cable Bracket	69	4	330852	Flat Washer 5/16"
29	33'	01467000	Nylon Rope 1/4"	70	2	05315700	Decal Pinch Points
30	2	82089400	Transport Lock	71	1	03439700	Decal Patent No. 6,505,760
31	8	01158500	HHCS 3/8" x 1 1/4"	72	1	17392200	Owners Manual
32	1	82119900	Dual Spout Bracket	73	4	82519000	Box Lock Bar
33	6	330837	Hex Nylock Nut 3/8"	74	4	82425000	Lock Bracket
34	1	331884	HHCS 3/8" x 2 1/2"	75	4	03670700	Spring
35	1	570630	Wear Plate 16"	76	4	20302600	Spring Bushing
36	1	82114000	Pivot Base	77	4	03783800	Carriage Bolt 3/8" X 2 1/2"
37	1	332569	Machine Bushing 1 7/8" x 1 1/4" x 10ga	78	2	01047000	Carriage Bolt 5/16" x 1"
38	1	17302100	Tube Shaft	79	2	19892900	Bushing
39	2	06409700	Set Collar 1" Steel	80	2	331835	HHCS 1/4" x 1"
40	1	605220	Bushing 1 1/4" x 1 x 1/2" HS	81	4	03818200	Square Plug



DETAIL A

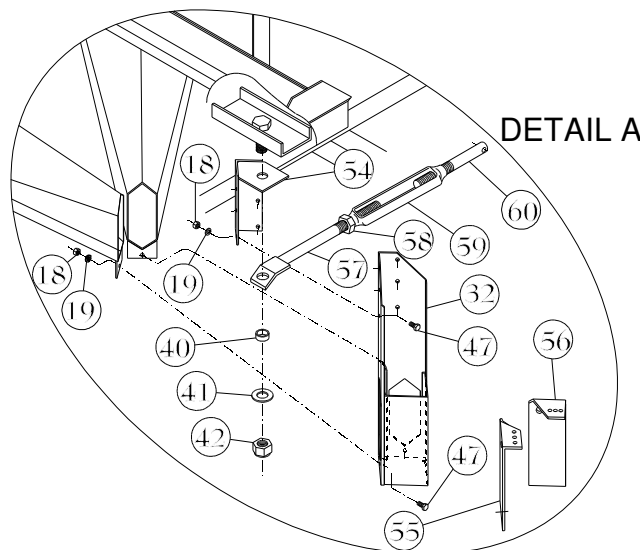
Seed Box Tote Stand - Gas Drive



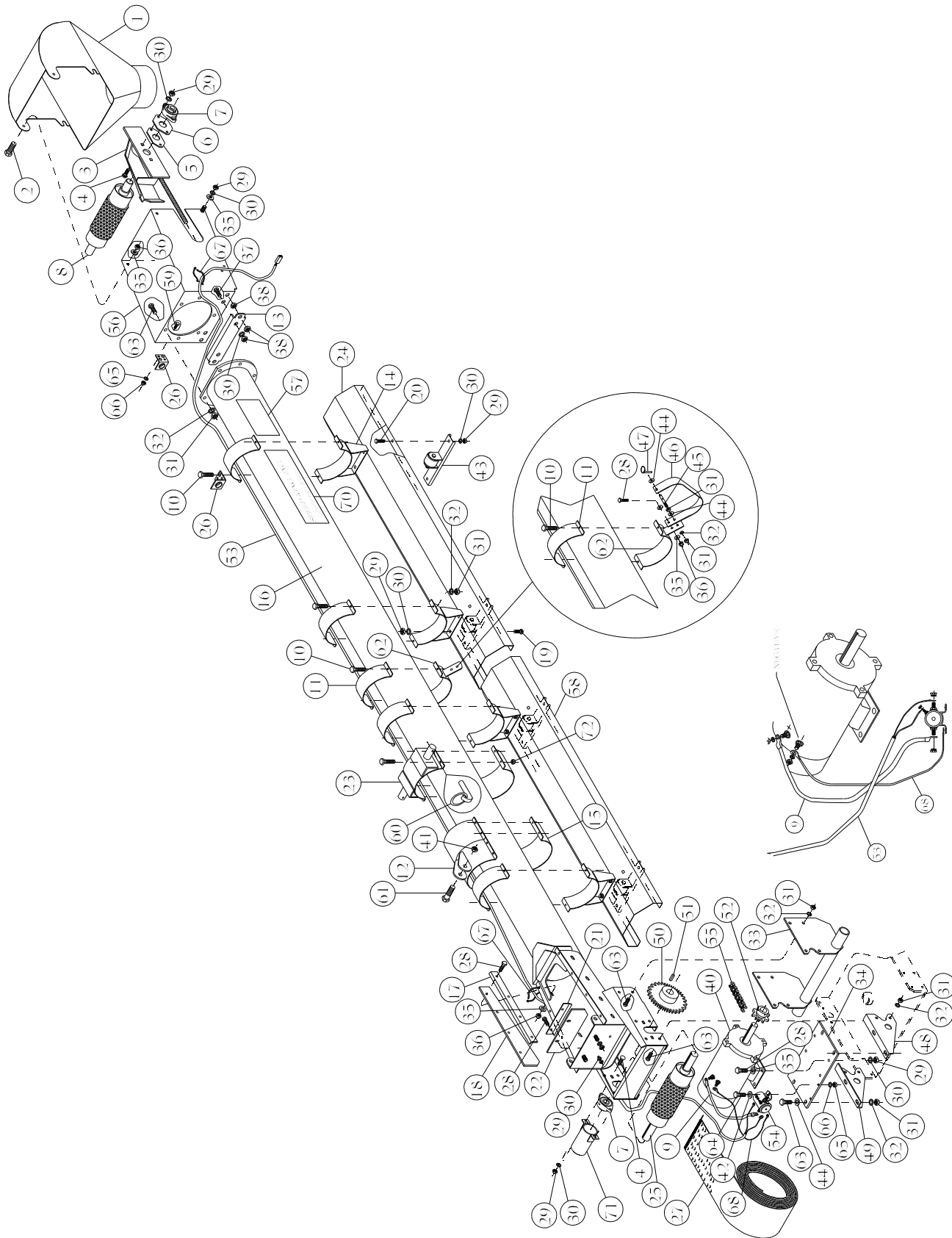
Seed Box Tote Stand - Gas Drive

Item	Qty	Part No.	Description	Item	Qty	Part No.	Description
1	1	82528100	Frame	40	1	605220	Bushing 1 1/4" x 1" x 1/2" HS
2	1	62486600	Spout Rear	41	1	330407	Flat Washer 1"
3	1	62487400	Spout Front	42	1	330597	Hex Nylock Nut 1"
4	1	607416	Manual Pak	44	4	01144500	HHCS 5/16" x 3/4"
5	4	01057900	HHCS 1/4" x 3/4"	45	10	330811	Hex Nut 5/16"
6	5	330522	Nylock 1/4"	46	10	330845	Lock Washer 5/16"
7	1	62767900	15' Feed Tube Assembly	47	18	01017300	HHCS 3/8" x 1"
8	1	62605100	Belt Guard	48	2	05310800	Decal Debris
9	1	01429000	Battery Box Group 24	49	2	05325600	Decal Safety Strap
10	6	01200500	Screw 5/16" x 3/4" Self Tap	50	2	05326400	Decal Warning Tip-Over
11	1	234849	Remote Box Mount	51	1	05327200	Decal Warning Clean-out
12	1	334847	Wing Nut 3/8"	52	1	05328000	Decal Danger Hopper
13	2	330050	Lock Washer 1/4"	53	1	05303300	Decal Warnings
14	2	332205	Hex Nut 1/4"	54	1	82133000	Spout Attachment
15	2	05315700	Decal Pinch Point	55	1	17385600	Spout Gate
16	4	82519000	Box Lock Bar	56	1	17387200	Spout Gate
17	2	17634700	Carrier Strap Long	57	1	82527300	Turnbuckle Bracket
18	24	330035	Hex Nut 3/8"	58	1	332288	Jam Nut 1"
19	23	330043	Lock Washer 3/8"	59	1	06814800	Turnbuckle 1" x 8 3/4"
20	33	330894	Flat Washer 3/8"	60	1	17287400	Turnbuckle Pin
21	2	16864100	Pin 3/8" x 2 1/2"	61	1	17392200	Owners Manual
22	2	330928	Klik Pin 3/16"	62	1	03439700	Decal Patent No. 6,505,760
23	1	606327	Decal Loading Caution	63	4	02016400	Flat Washer 1/4"
24	2	600577	Drive Screw	64	1	82502600	Shaft End Guard
25	1	00694000	Serial Plate	66	1	02393700	HHCS 1/4 x 1 1/4"
26	2	01113000	Decal "Speed King Head"	67	4	82425000	Lock Bracket
27	2	01202100	Decal "Name"	68	4	03670700	Spring
28	1	82099300	Chute	69	4	20302600	Spring Bushing
29	4	330852	Flat Washer 5/16"	70	4	03783800	Carriage Bolt 3/8" x 2 1/2"
30	2	82089400	Transport Lock	71	1	82518200	Index
31	6	01158500	HHCS 3/8" x 1 1/4"	72	1	20608600	Index Mount Plate
32	1	82119900	Dual Spout Bracket	73	1	20609400	Index Brace Plate
33	5	330837	Hex Nylock Nut 3/8"	74	1	03651700	Insulator
34	1	331884	HHCS 3/8" x 2 1/2"	75	1	01034800	U-bolt 3/8" x 1 1/4" x 2 1/4"
35	1	570630	Wear Plate 16"	76	2	19892900	Bushing
36	1	82114000	Pivot Base	77	2	01047000	Carriage Bolt 5/16" x 1"
37	1	332569	Machine Bushing 1 7/8" x 1 1/4" x 10ga	78	2	331835	HHCS 1/4" x 1"
38	1	967638	Shaft	79	8	01158500	HHCS 3/8" x 1 1/4"
39	1	153478	Lock Bushing	80	33'	01467000	Nylon Rope 1/4"
				81	4	03818200	Square Plug

Remote Receiver #03962800
Remote Transmitter #03963600

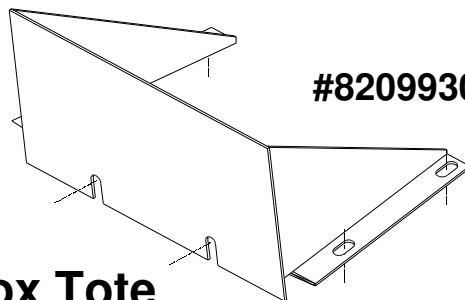


Seed Box Tote 15' Feed Tube Assembly Electric Drive



Seed Box Tote 15' Feed Tube Assembly Electric Drive

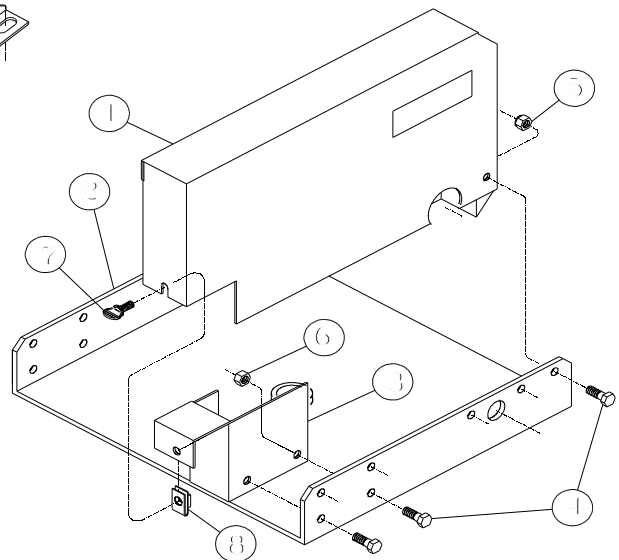
Item	Qty	Part No.	Description	Item	Qty	Part No.	Description
1	1	81842700	Spout	36	11	331611	Hex Nylock 5/16"
2	2	01144500	HHCS 5/16" x 3/4"	37	2	335240	HHCS 1/2" x 1 3/4"
3	1	961714	Take-up Bar Right	38	6	330134	Hex Nut 1/2"
	1	961565	Take-up Bar Left	39	2	330142	Lock Washer 1/2"
4	8	01261700	Carriage Bolt 5/16" x 1 1/2"	40	1	03648300	Electric Motor 12V 1HP
5	2	151746	Head Bearing Slide Inner	41	1	331363	Hex Nylock 1/2"
6	2	151753	Head Bearing Slide Outer	42	2	02016400	Flat Washer 1/4"
7	4	03001500	Bearing 1" Flange	43	1	62751300	Roller Base
8	1	62212600	Head Roller	44	6	330894	Flat Washer 3/8"
9	1	62377700	Positive Connector Cable	45	1	16864100	Spout Pin Shaft
10	22	01158500	HHCS 3/8" x 1 1/4"	46	1	16865800	Spout Strap
11	5	16577910	Half Band 6 x 2	47	1	330928	Klik Pin 3/16"
12	1	82358300	Turn Buckle Half Band	48	1	17230400	Mount Plate Right
13	1	16497000	Adjustment Mount Plate	49	1	17229600	Mount Plate Left
14	4	82489600	Belt Cover Mount	50	1	84723600	Sprocket #40 36T 1"B
15	3	16578710	Half Band 6 x 4	51	1	17375700	Key 1/4" x 1"
16	1	82421900	Tail	52	1	03722600	Sprocket #40 11T 5/8" B
17	2	16427700	Skirt Board Plate	53	1	62379300	Tube Cable
18	2	16431900	Skirt Board Back	54	1	03251600	Solenoid Switch
19	8	334409	Carriage Bolt 5/16" x 3/4"	55	1	62371000	Chain #40 x 58 Complete
20	2	333542	HHCS 5/16" x 5/8"	56	1	82353400	Head Frame
21	1	16428500	Skirt Board Plate	57	1	606335	Decal Belt Training
22	1	16432700	Skirt Board Back	58	1	20531000	Belt Guard Plate
23	1	82117300	Tube Transport Lock	59	2	01150200	HHCS 1/4" x 1/2"
24	1	20489100	Belt Guard	60	1	336974	Klik Pin 5/16" w/ring
25	1	62705900	Tail Roller	61	1	335422	HHCS 1/2" x 2 1/2"
26	3	62213400	Head Rope Guide	62	1	81865800	Half Band Guard
27	1	62850300	Belt 8" x 35'-7 7/8"	63	22	01017300	HHCS 3/8" x 1"
28	11	01010800	HHCS 5/16" x 1"	64	2	331835	HHCS 1/4" x 1"
29	22	330811	Hex Nut 5/16"	65	4	332205	Hex Nut 1/4"
30	22	330845	Lock Washer 5/16"	66	4	330050	Lock Washer 1/4"
31	18	330035	Hex Nut 3/8"	67	2	571299	Cable Tie 8 1/2"
32	17	330043	Lock Washer 3/8"	68	1	62378500	Ground Wire
33	1	82111600	Tube Mount	70	2	01202100	Decal Speed King
34	1	17227000	Motor Mount Plate	71	1	80161300	Shaft End Guard
35	16	330852	Flat Washer 5/16"	72	28	330837	Hex Nylock 3/8"



#82099300 - Hopper

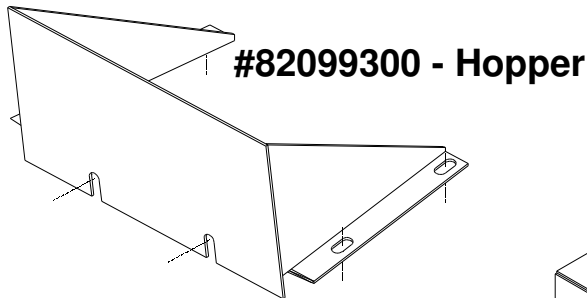
Seed Box Tote Guard - Electric

Item	Qty	Part No.	Description
1	1	62382700	Chain Guard Assembly
2	1	82114000	Pivot Base
3	1	17306200	Guard Bracket
4	3	01017300	HHCS 3/8" x 1"
5	1	330837	Hex Nylock Nut 3/8"
6	2	330035	Hex Nut 3/8"
7	1	01489400	Thumb Screw 5/16" x 3/4"
8	1	01574300	Clip Nut 5/16" U-Type



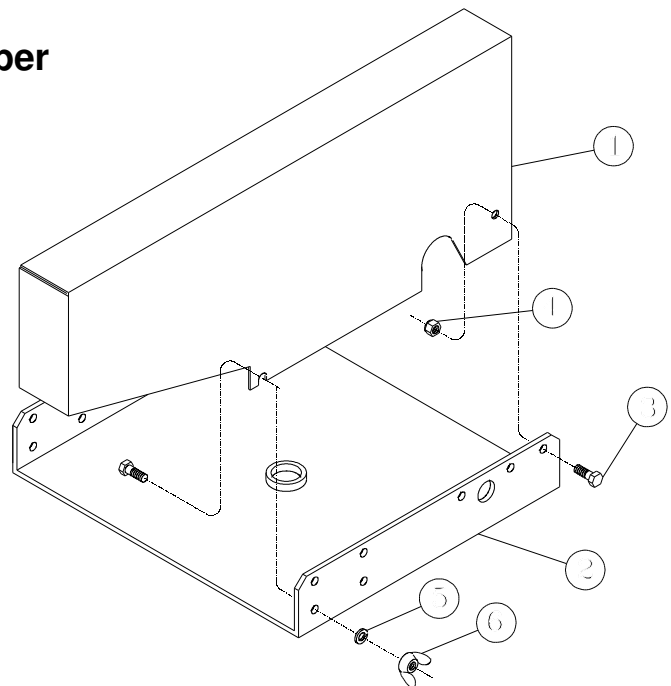
Seed Box Tote 15' Feed Tube Assembly Gas Drive

Item	Qty	Part No.	Description	Item	Qty	Part No.	Description
1	1	81842700	Spout	36	11	331611	Hex Nylock 5/16"
2	2	01144500	HHCS 5/16" x 3/4"	37	2	335240	HHCS 1/2" x 1 3/4"
3	1	961714	Take-up Bar Right	38	6	330134	Hex Nut 1/2"
	1	961565	Take-up Bar Left	39	2	330142	Lock Washer 1/2"
4	8	01261700	Carriage Bolt 5/16" x 1 1/2"	40	1	82353400	Head Frame
5	2	151746	Head Bearing Slide Inner	41	1	331363	Hex Nylock 1/2"
6	2	151753	Head Bearing Slide Outer	42	2	333542	HHCS 5/16" x 5/8"
7	4	03001500	Bearing 1" Flange	43	1	62751300	Roller Base
8	1	62212600	Head Roller	44	2	330894	Flat Washer 3/8"
9	8	334409	Carriage Bolt 5/16" x 3/4"	45	1	16864100	Spout Pin Shaft
10	22	01158500	HHCS 3/8" x 1 1/4"	46	1	16865800	Spout Strap
11	5	16577910	Half Band 6 x 2	47	1	330928	Klik Pin 3/16"
12	1	82358300	Turn Buckle Half Band	48	1	82501800	Motor Mount-Electric Start
13	1	16497000	Adjustment Mount Plate	49	1	04255600	Sheave 8 x 1 1B
14	4	82489600	Belt Cover Mount	50	1	17375700	Key 1/4" x 1"
15	3	16578710	Half Band 6 x 4	51	1	336974	Klik Pin 5/16" w/ring
16	1	82421900	Tail	52	1	335422	HHCS 1/2" x 2 1/2"
17	2	16427700	Skirt Board Plate	53			
18	2	16431900	Skirt Board Back	54	18	01017300	HHCS 3/8" x 1"
19	3	62213400	Head Rope Guide	55	1	81865800	Half Band Guard
20	2	01150200	HHCS 1/4" x 1/2"	56	2	332205	Hex Nut 1/4"
21	1	16428500	Skirt Board Plate	57	2	330050	Lock Washer 1/4"
22	1	16432700	Skirt Board Back	58	1	80161300	Shaft End Guard
23	1	82117300	Tube Transport Lock	59	28	330837	Hex Nylock Nut 3/8"
24	1	20489100	Belt Guard	60	1	20531000	Belt Guard Plate
25	1	62705900	Tail Roller	61			
26	2	01202100	Decal Speed King	62	1	62787700	Power Lead Cable
27	1	62850300	Belt 8" x 35'-7 7/8"	63	1	62774500	Solenoid Ground Wire
28	11	01010800	HHCS 5/16" x 1"	64	1	62772900	Engine Assembly
29	10	330811	Hex Nut 5/16"	65	1	03752300	V-Belt B-44
30	10	330845	Lock Washer 5/16"	66	1	62782800	Battery Cable 23"
31	10	330035	Hex Nut 3/8"	67	1	571299	Cable Tie 8 1/2"
32	9	330043	Lock Washer 3/8"	68	4	335448	HHCS 5/16" x 1 1/2"
33	1	82111600	Tube Mount				
34	1	606335	Decal Belt Training				
35	17	330852	Flat Washer 5/16"				

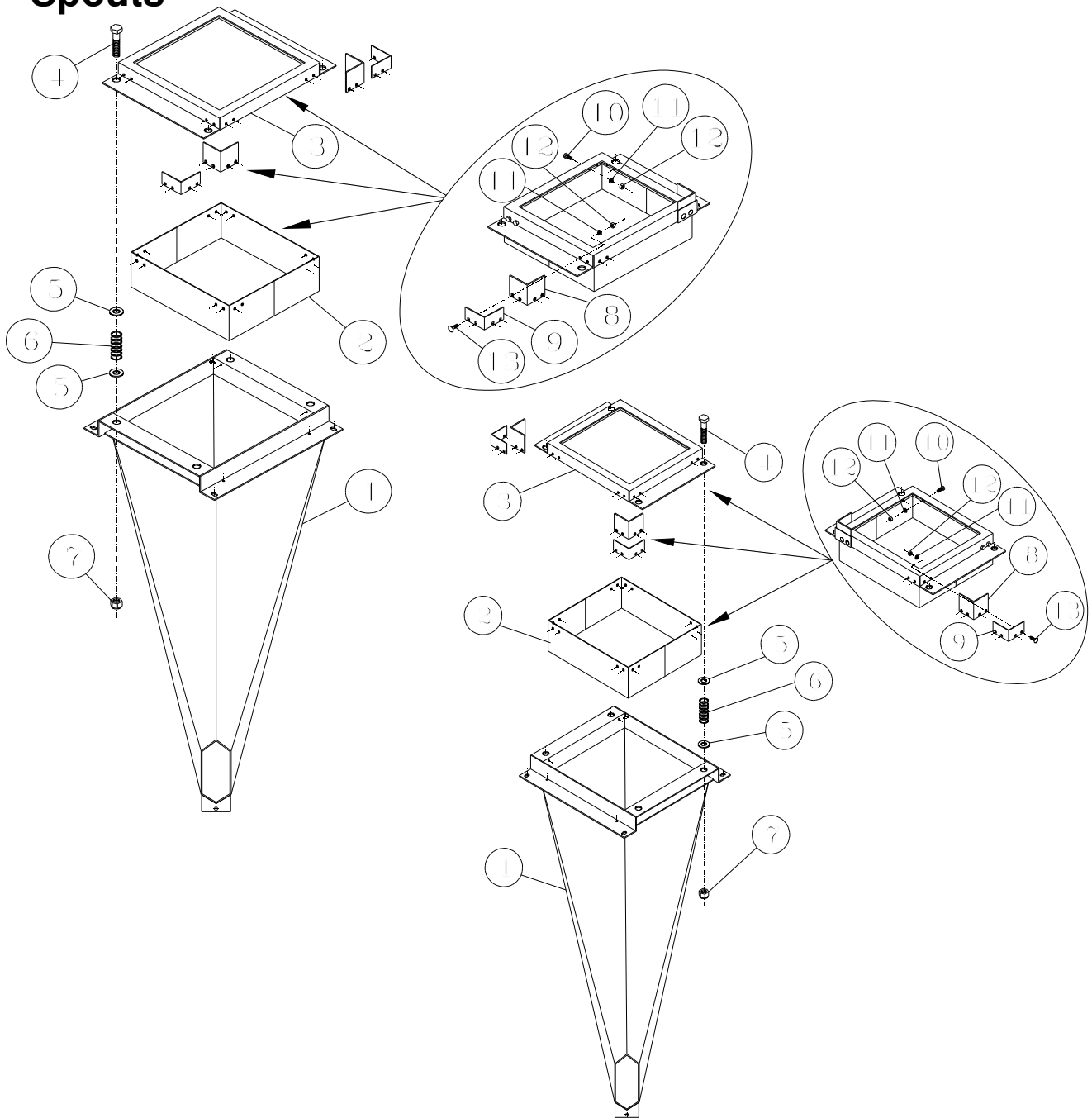


Seed Box Tote Guard - Gas

Item	Qty	Part No.	Description
1	1	62605100	Guard
2	1	82114000	Pivot Base
3	2	01017300	HHCS 3/8" x 1"
4	1	330837	Hex Nylock Nut 3/8"
5	1	330043	Lock Washer 3/8"
6	1	334847	Wing Nut 3/8"



Seed Box Tote Spouts



#62487400 Front Spout Assembly

#62486600 Rear Spout Assembly

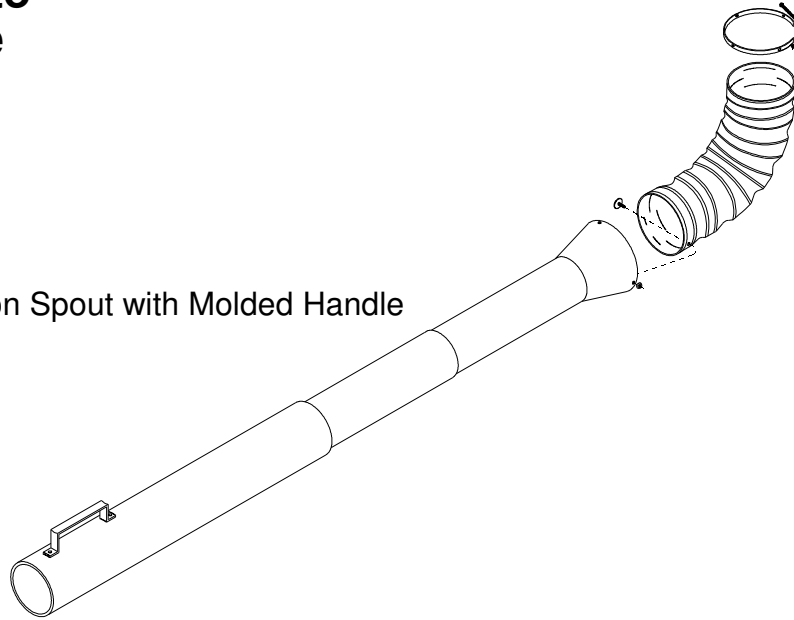
Item	Qty	Part No.	Description
1	1	82110800	Spout Front
2	1	82105800	Spout Frame Inside
3	1	82107400	Spout Frame Top
4	4	335620	HHCS 5/8" x 3"
5	8	330183	Flat Washer 5/8"
6	4	501031	Spring 7/64" x 2 3/4"
7	4	01572700	Hex Nylock Nut 5/8"
8	2	17252800	Deflector Skirtboard
9	2	17251000	Deflector Back-up
10	8	01057900	HHCS 1/4" x 3/4"
11	16	330050	Lock Washer 1/4"
12	16	332205	Hex Nut 1/4"
13	8	336636	Carriage Bolt 1/4" x 3/4"

Item	Qty	Part No.	Description
1	1	82109000	Spout Rear
2	1	82105800	Spout Frame Inside
3	1	82107400	Spout Frame Top
4	4	335620	HHCS 5/8" x 3"
5	8	330183	Flat Washer 5/8"
6	4	501031	Spring 7/64" x 2 3/4"
7	4	01572700	Hex Nylock Nut 5/8"
8	2	17252800	Deflector Skirtboard
9	2	17251000	Deflector Back-up
10	8	01057900	HHCS 1/4" x 3/4"
11	16	330050	Lock Washer 1/4"
12	16	332205	Hex Nut 1/4"
13	8	336636	Carriage Bolt 1/4" x 3/4"

Seed Box Tote Flexible Tube

Units with Remote

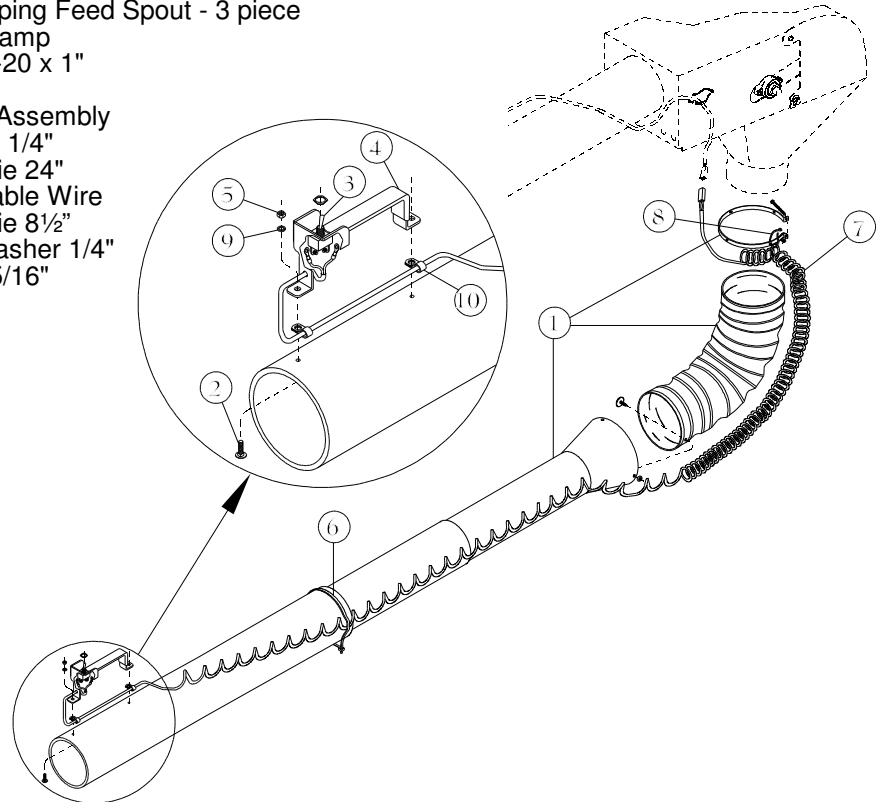
#03968500 - 3 Section Spout with Molded Handle



Units without remote

#62369400 - Flexible Spout Assembly

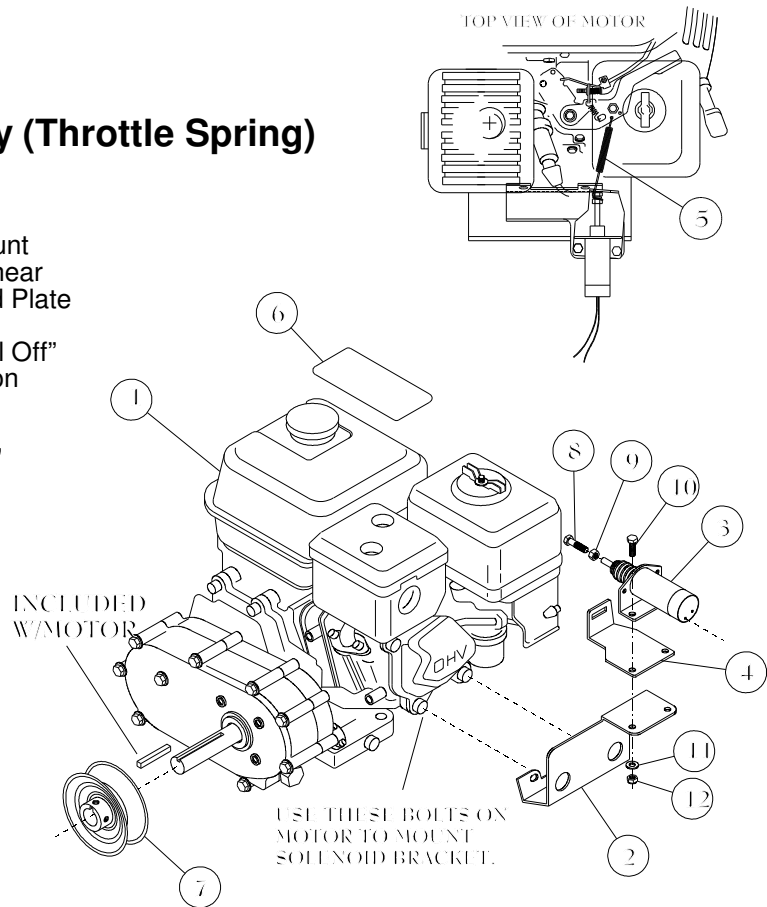
Item	Qty	Part No.	Description
1	1	01526300	Telescoping Feed Spout - 3 piece
		03423100	Hose Clamp
2	2	01065200	Bolt 1/4-20 x 1"
3	1	03723400	Switch
4	1	62748900	Handle Assembly
5	2	332205	Hex Nut 1/4"
6	1	571281	Cable Tie 24"
7	1	62380100	Retractable Wire
8	1	571299	Cable Tie 8 1/2"
9	2	330050	Lock Washer 1/4"
10	2	01059500	Clamp 5/16"



Seed Box Tote Engine Assembly

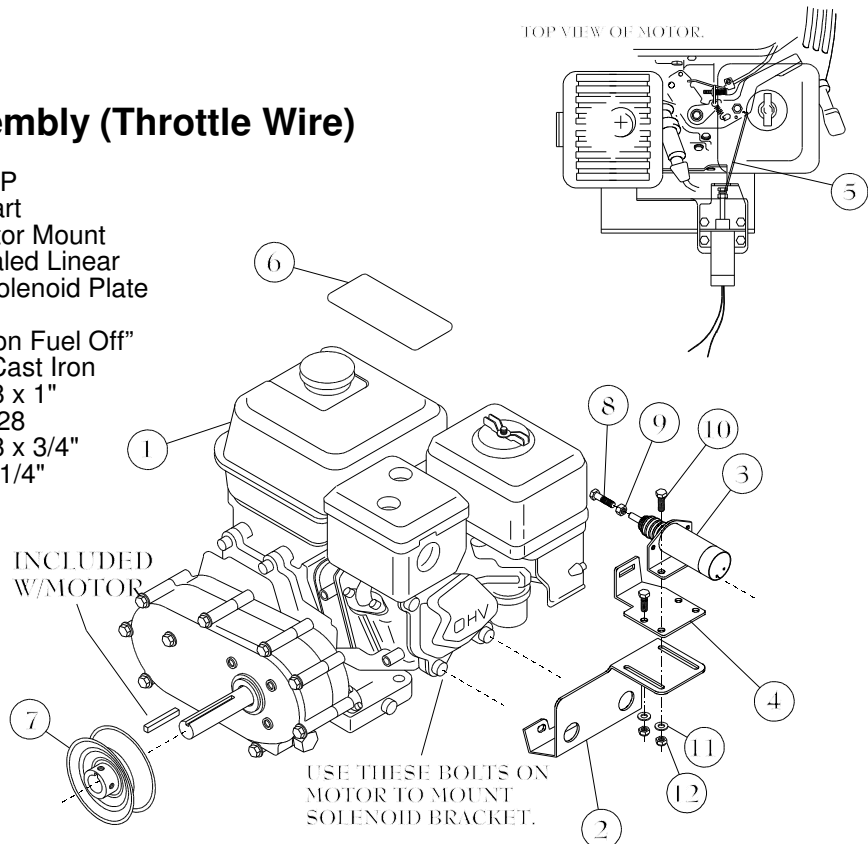
#63046700 - Engine Assembly (Throttle Spring)

Item	Qty	Part No.	Description
1	1	03750400	Engine 5.5 HP Electric Start
2	1	82820200	Solenoid Motor Mount
3	1	03961000	Solenoid Sealed Linear
4	1	30479000	Adjustable Solenoid Plate
5	1	04123600	Throttle Spring
6	1	05316500	Decal "Caution Fuel Off"
7	1	16612400	Sheave 3.5 Cast Iron
8	1	03959400	HHCS 1/4-28 x 1"
9	1	03960200	Hex Nut 1/4-28
10	2	01057900	HHCS 1/4-28 x 3/4"
11	2	02016400	Flat Washer 1/4"
12	2	330522	Nylock 1/4"



#62936000 - Engine Assembly (Throttle Wire)

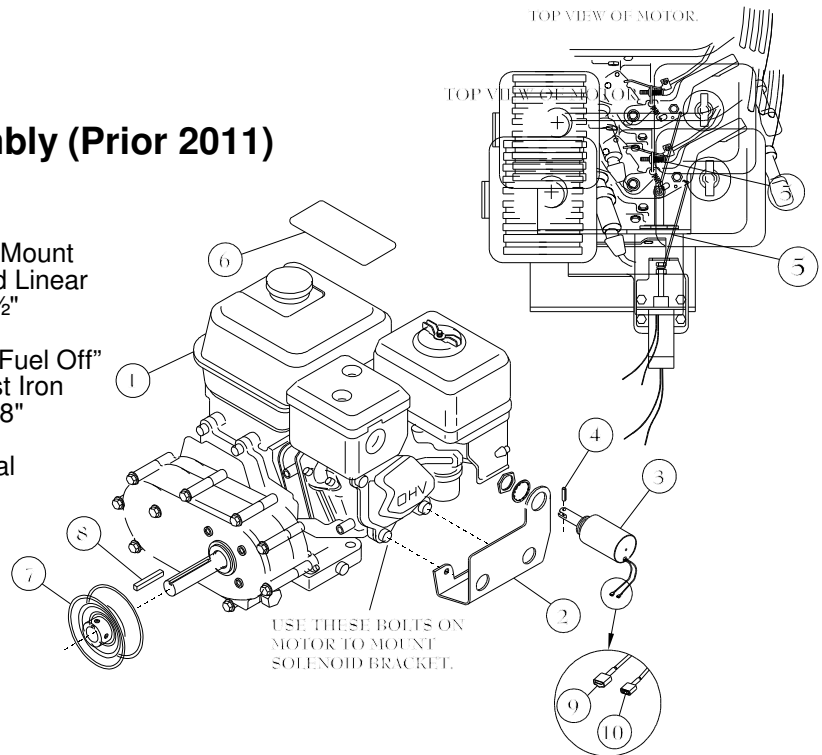
Item	Qty	Part No.	Description
1	1	03750400	Engine 5.5 HP Electric Start
2	1	235671	Solenoid Motor Mount
3	1	03961000	Solenoid Sealed Linear
4	1	285148	Adjustable Solenoid Plate
5	1	611202	Throttle Wire
6	1	05316500	Decal "Caution Fuel Off"
7	1	16612400	Sheave 3.5 Cast Iron
8	1	03959400	HHCS 1/4-28 x 1"
9	1	03960200	Hex Nut 1/4-28
10	4	01057900	HHCS 1/4-28 x 3/4"
11	4	02016400	Flat Washer 1/4"
12	4	330522	Nylock 1/4"



Seed Box Tote Engine Assembly

#62772900 - Engine Assembly (Prior 2011)

Item	Qty	Part No.	Description
1	1	03750400	Engine 5.5 HP Electric Start
2	1	20530200	Solenoid Motor Mount
3	1	03751500	Solenoid Sealed Linear
4	1	03757200	Roll Pin 1/8" x 1/2"
5	1	03770500	Throttle Wire
6	1	05316500	Decal "Caution Fuel Off"
7	1	16612400	Sheave 3.5 Cast Iron
8	1	16613200	Key 7mm x 1 3/8"
9	1	03772100	Male Terminal
10	1	03771300	Female Terminal



Remote Control

To Program Remote:

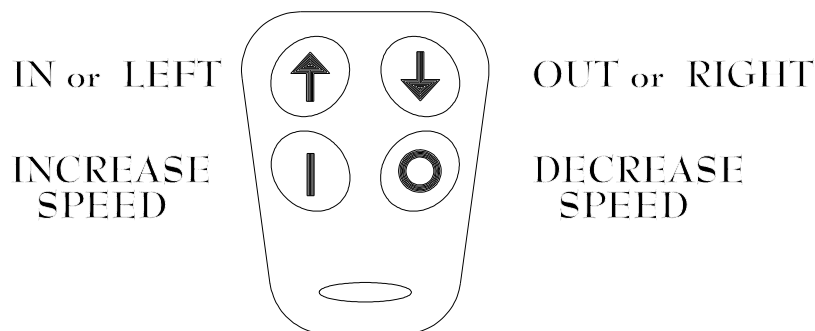
Power up the unit. When you do so, the LED on the receiver unit will flash RED four times. This indicates that the unit has received power. There is magnetically controlled switching circuitry embedded in the receiver unit. Place a fairly powerful magnet over the receiver "learn" area (near R11) for a brief moment (3 seconds), and then remove it. The LED will go to constant RED state. Now immediately press any button on the transmitter you are attempting to learn in. The LED will go to a GREEN/YELLOW color. This confirms that the receiver has picked up a signal from the transmitter, and subsequently learned that signal. Communication has been established, and it is now ready to function properly.

Troubleshooting:

Should the above procedure not complete successfully, wait until the LED light goes out, and repeat the procedure. If for any reason you experience a second failure of the learn procedure, do the following. Place the magnet on the learn area and the LED will go to a constant RED state. Leave the magnet in place on the receiver until the LED light goes out (approximately 10 seconds). This action completely clears the receiver's memory. It's akin to reformatting, or freeing up all of the space on a computer hard drive. Once you have cleared the memory, proceed with the standard learn procedure detailed above for each of the key fob transmitters you wish to use with the device. If, after all of the procedures detailed above are completed, the unit is still not functioning, check the battery in the transmitter once again. (Occasionally, even new batteries fail, or are defective from the factory. If you have a voltage meter, confirm that battery voltage is at least 2.7 volts.) If that still does not solve the problem, contact CrustBuster/Speed King, Inc. At (620) 227-7106.

Battery:

It is recommended that the battery be replaced every year.





P.O. Box 1438

Dodge City, Kansas 67801

(620) 227-7106
