

P.O. Box 526 - Spearville, Kansas 67876 - (620) 227-7106

Seed Tote 4 Box

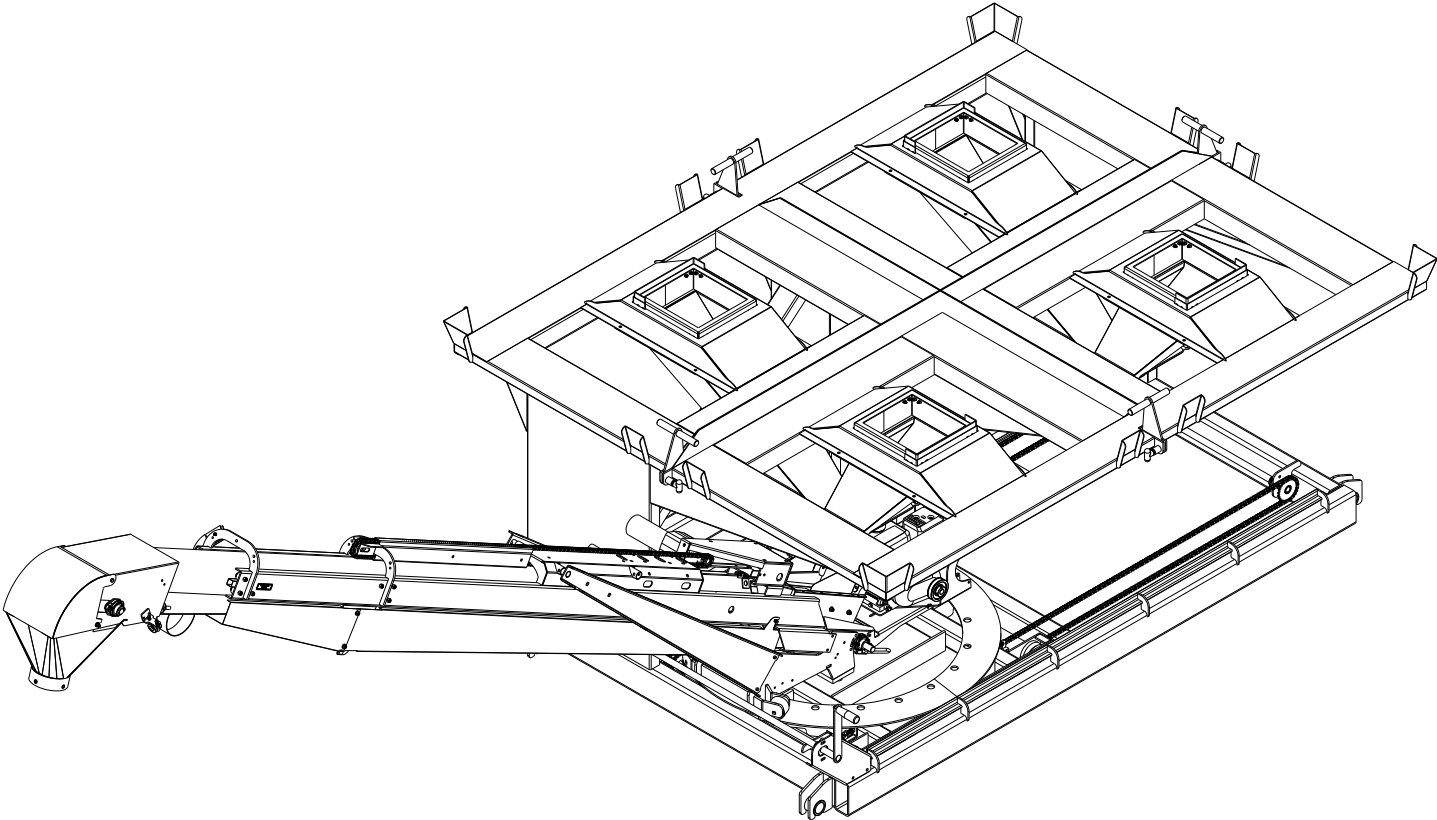


Table of Contents

Warranty Information.	1	Repair Parts	
Operator Qualifications.	2	Seed Tote 4 Box.	13-14
Safety and Warnings.	3-12	Telescoping Conveyor.	14-18
		Carriage Assembly.	19
		Hopper Assembly.	19
		Engine Assembly.	20
		Remote Assembly.	21
		Trailer Assembly.	22

Identification

Your Seed Tote is identified by a Serial Number and Model Number. Record these numbers in the spaces provided in this manual and refer to them when ordering parts or requesting service.

Serial Number	Model Number
---------------	--------------

Warranty

CrustBuster/Speed King, Inc. of Spearville, Kansas, warrants consumer products, so far as the same is of our own manufacture, against defects in material and workmanship under normal and reasonable use for a period of one (1) year after date of delivery to the original purchaser. Our obligation under this warranty is limited, however, to furnishing a replacement part for a defective part, or at our option to repair the defective parts without charge, either method F.O.B. our works, provided the consumer gives CrustBuster/Speed King, Inc. written notice within ten (10) days after said part appears to be defective and affords CrustBuster/Speed King, Inc. an opportunity to inspect. Unless otherwise expressly agreed to by CrustBuster/Speed King, Inc., the consumer shall bear the expense of installation.

CrustBuster/Speed King, Inc. will not be liable for consequential damages where the loss is commercial, including but not limited to loss of profit, delays or expenses.

This warranty sets forth the extent of our liability. The foregoing is in lieu of all other warranties, expressed or implied, including any warranties that extend beyond the description of the product.

Operator Qualifications

Operation of this Seed Tote shall be limited to competent and experienced persons. In addition, anyone who will operate or work around this equipment must use good common sense. In order to be qualified, he or she must also know and meet all other requirements, such as:

1. Some regulations specify that no one under the age of 16 may operate power machinery. It is your responsibility to know what these regulations are in your area or situation.
2. Current OSHA regulations state in part: "At the time of initial assignment and at least annually thereafter the employer shall instruct EVERY employee in the safe operation of servicing of all equipment with which the employer is, or will be involved."
3. Unqualified persons are to STAY OUT of the work area.
4. A person who has not read and understood all operating and safety instructions is not qualified to operate the machinery.



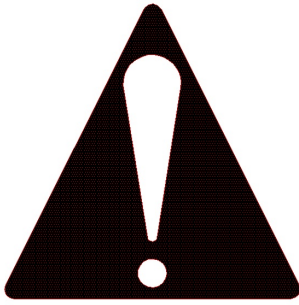
FAILURE TO READ THIS SEED TENDER MANUAL AND ITS SAFETY INSTRUCTIONS IS A MISUSE OF THE EQUIPMENT.



Sign Off Sheet

As a requirement of OSHA, it is necessary for the employer to train the employee in the safe operation and safety procedures with this Seed Tender. We include this sign off sheet for your convenience and personal record keeping.

DATE	EMPLOYER	EMPLOYER'S SIGNATURE



BE ALERT!

Your Safety is involved.

General Safety Statement



WATCH FOR THIS SYMBOL. IT POINTS OUT IMPORTANT SAFETY PRECAUTIONS. IT MEANS "ATTENTION — BECOME ALERT!"

YOUR SAFETY IS INVOLVED.

It is your responsibility as an owner, operator, or supervisor to know and instruct everyone using this Seed Tote at the time of initial assignment and at least annually thereafter, of the proper operation, precautions, and work hazards which exist in the operation of this Seed Tote in accordance with OSHA Regulations.

Safety Is No Accident

The following safety instructions, combined with common sense, will save your equipment from needless damage and the operator from unnecessary exposure to personal hazard. Pay special attention to the caution notes in the text. Review this manual at least once each year with new and/or experienced operators.



1. Read and understand the operator's manual before operating this Seed Tote. Failure to do so is considered a misuse of the equipment.
2. Make sure Seed Tote is secure before operating.
3. Always keep children away from Seed Tote when operating.
4. Make sure everyone that is not directly involved with the operation is out of the work area before beginning the operation.
5. Make sure all safety devices, shields, and guards are in place and are functional before beginning the operation.
6. Shut off power to adjust, service, or clean.
7. Keep hands, feet, and clothing away from moving parts. It is a good idea to remove all jewelry before starting the operation.
8. Visually inspect the Seed Tote periodically during operation for signs of excessive vibration, loose fasteners, and unusual noises.
9. Before transportation unit, make sure tube assembly is locked into place and safety strap is on and secure.
10. Keep box tote on level surface.

DANGER: Indicates an imminently hazardous situation which, if not avoided, will result in death or serious injury.



WARNING: Indicates a hazardous situation which, if not avoided, could result in death or serious injury.



CAUTION: Indicates a potentially hazardous situation which, if not avoided, may result in minor or moderate injury.



NOTICE: Used to address practices not related to physical injury.





CAUTION

1. Read and understand instruction manual before operating.
2. Keep all safety shields and devices in place.
3. Make certain everyone is clear before operating machine.
4. Keep hands, feet, and clothing away from moving parts.
5. Shut off power to adjust, service, or clean.
6. Make sure machine is secured before operating.
7. When transporting, shut fuel valve lever off.

Pre-Operation Check List

1. Check all bearings for proper lubrication.
2. Check the tube for foreign material.
3. Check all belts for proper tension.
4. Start unit and check tender belt alignment while unit is empty.

BELT CARE

It is suggested that the unit be run every two to three days or more often if possible. This tends to keep the tender belt alive and stops any forming of the belt to the curvature of the tube while the unit is not in use.

NOTE: Belt may deteriorate if not in use and exposed to weather conditions for any prolonged period of time.

Operation Sequence

1. Check drive belt for proper tension.
2. Make sure tender belt is properly tensioned.
3. Allow unit to run empty for a few minutes to flex tender belt.
4. Check tender belt for proper alignment.
5. Before shutting power off, be certain head and tail unit is empty.

STORAGE

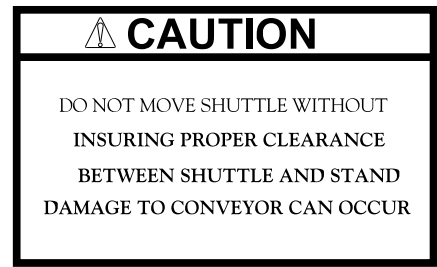
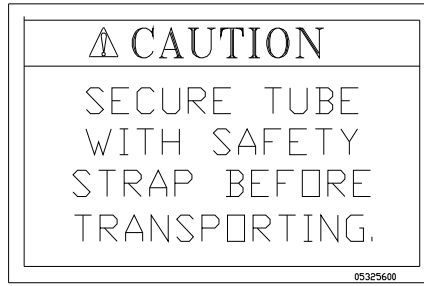
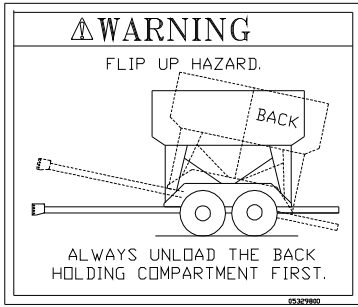
Temporary Storage

1. Relieve tension from all belts; both v-belt and tender belt.
2. Store all belt equipment in a dry place. If equipment cannot be stored out of the weather, cover engine and mechanical parts with waterproof material.

Prolonged Storage

1. Remove all belts and store in a cool, dark, dry place.
2. Wash belt thoroughly.
3. Wash tube both inside and out.
4. Lubricate all bearings.
5. Store in a dry shelter.

Operation Cautions



Operation Remote

- Belt On →
 - Gate Close →
 - Telescope In →
 - Rotate Rear →
 - Shuttle Rear →
- ←Belt Off
 - ←Gate Open
 - ←Telescope Out
 - ←Rotate Foward
 - ←Shuttle Foward



- Step 1:** Make sure conveyor has all transport locks removed.
- Step 2:** Rotate conveyor rearward until conveyor clears stand corner.
- Step 3:** Move shuttle rearward until conveyor is lined up with rear spout.
(Note: There are prox sensors that stop shuttle when all the way back.)
- Step 4:** Flip toggle switch located on remote box to the Gate 2 (rear gate).

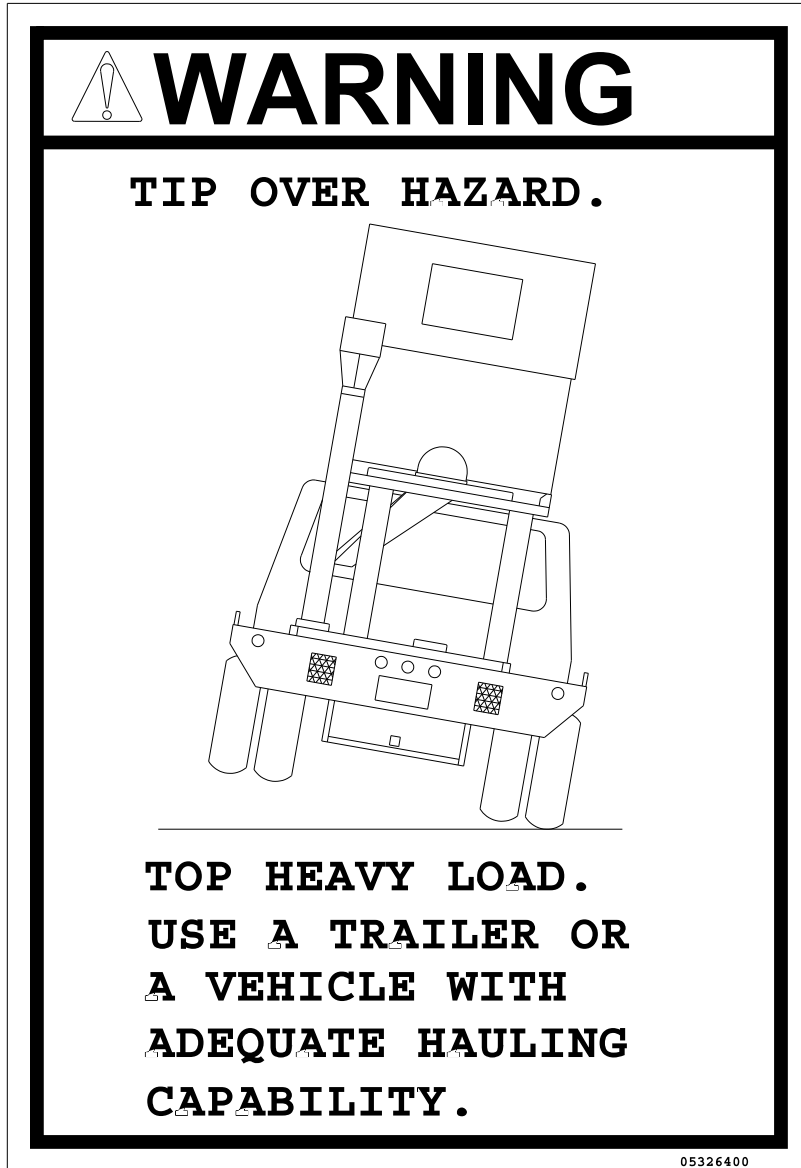


- Step 5:** Open tote box.
- Step 6:** Open gate to allow seed access to belt.
- Step 7:** Position spout to unit to be filled by using the rotate and telescoping buttons.
- Step 8:** Turn belt on and off as needed to fill unit. Once unit is full, close gate and run excess seed out of tube.
- Step 9:** Shut gate of pro box.
- Step 10:** Move shuttle to forward position.
- Step 11:** Rotate conveyor to forward postion .
- Step 12:** Re-attach transport hooks.

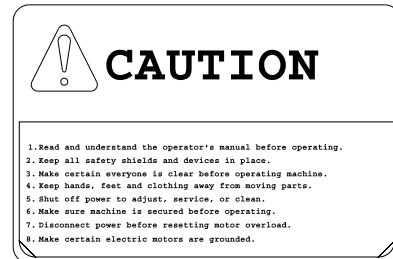
Safety Decals

REMEMBER: If Safety signs have been damaged, removed, become illegible or parts replaced without decals, new decals must be applied. New decals are available from your authorized distributor or factory. Individual decals shown below.

#05326400



#05303300



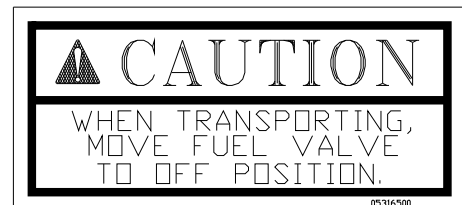
#05312400



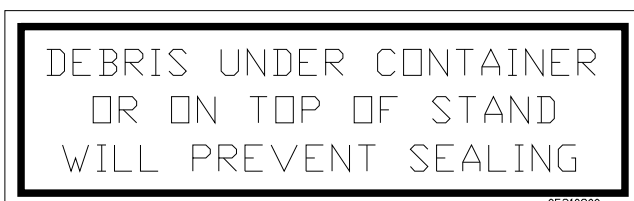
#05328000



#05316500

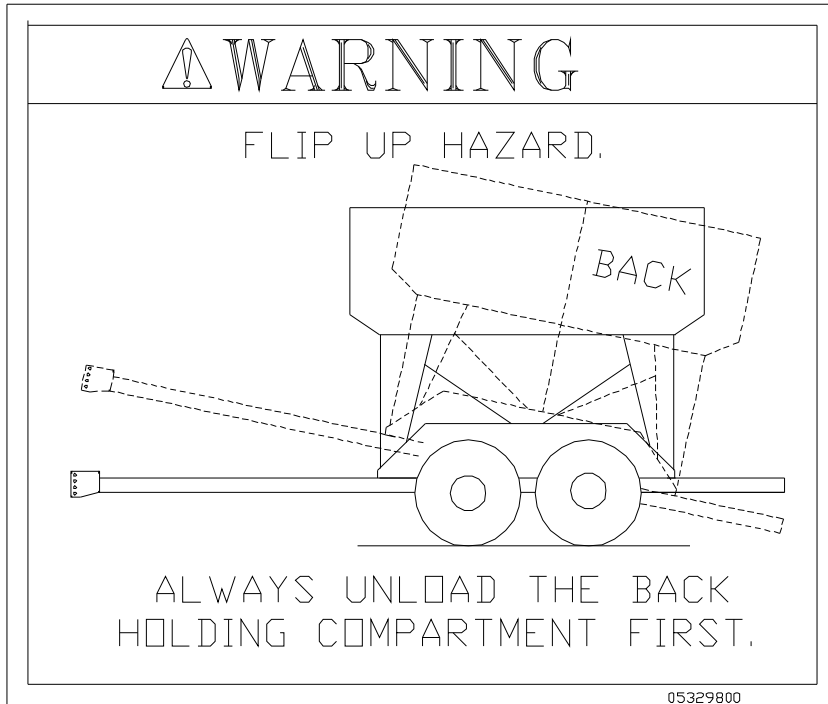


#05310800

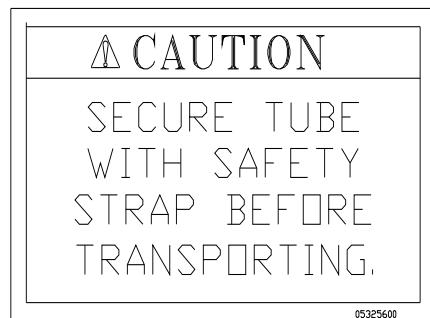


Safety Decals Cont'd

#05310800



#05325600



#05315700





Danger

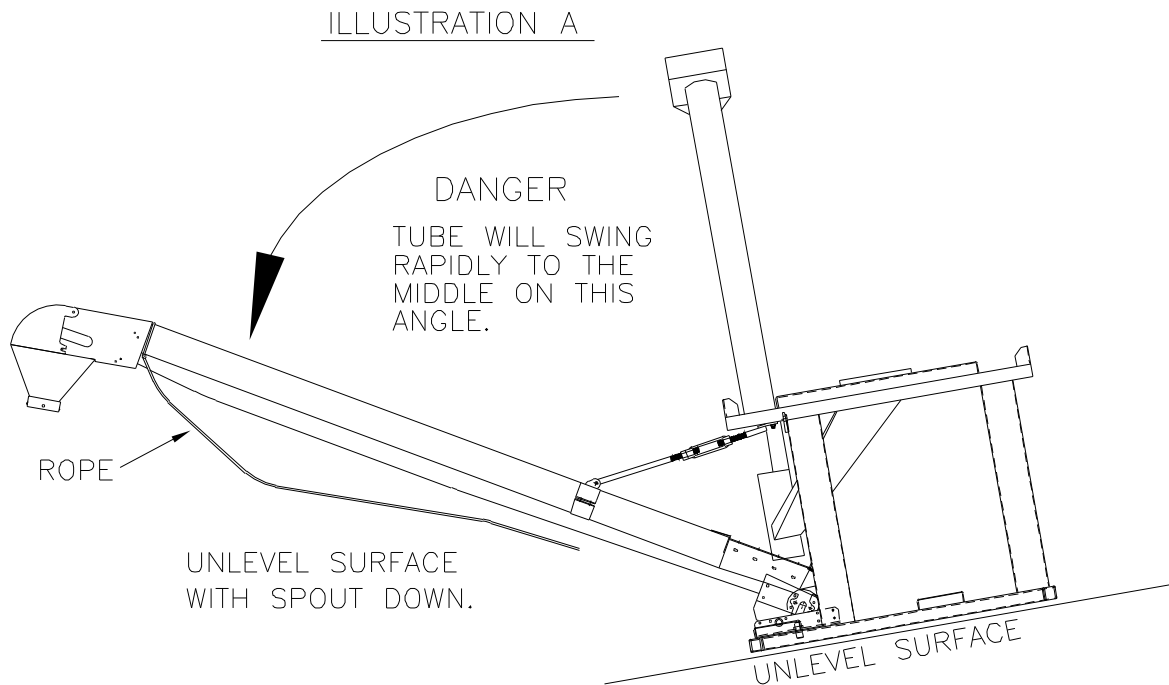
**BE ALERT! YOUR PERSONAL SAFETY IS INVOLVED.
ALWAYS PARK TENDER ON LEVEL SURFACE TO UNLOAD.**

Before releasing safety strap that secures tube assembly, make sure tender is sitting on a level surface.

If parked on an unlevel surface, and the tube assembly is not restrained, it could swing rapidly and out of control to one side or the other.

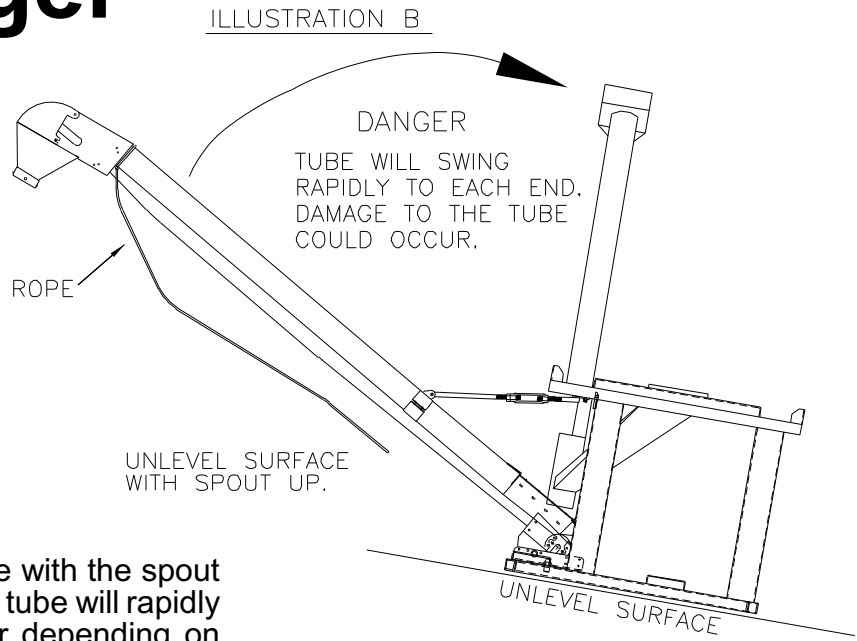
The rope attached to the tube is to assist in guiding the tube. If tube is swinging out of control, the rope may not control the tube.

If parked on an unlevel surface with the spout side down, (See *illustration A*) the tube could rapidly swing out.





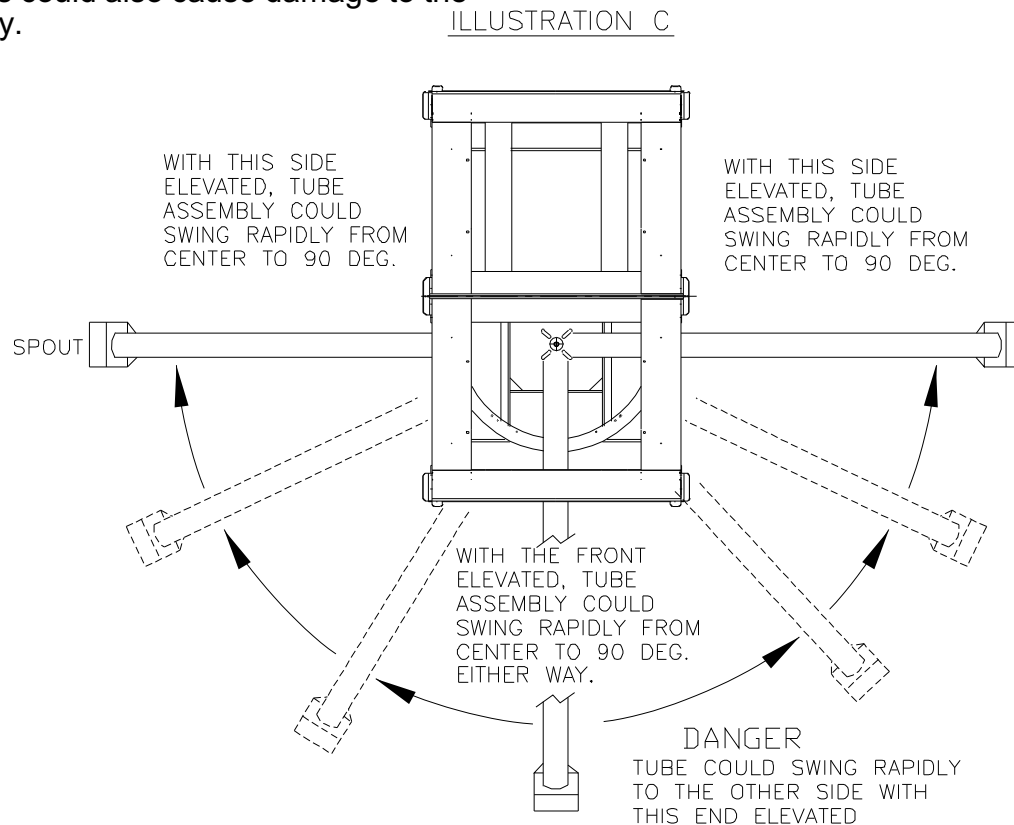
Danger



If parked on an unlevel surface with the spout side up, (See *illustration B*) the tube will rapidly swing to one end or the other depending on which side the gravity pulls it. This could be very hazardous for anyone standing in its path. Be very cautious of situation.

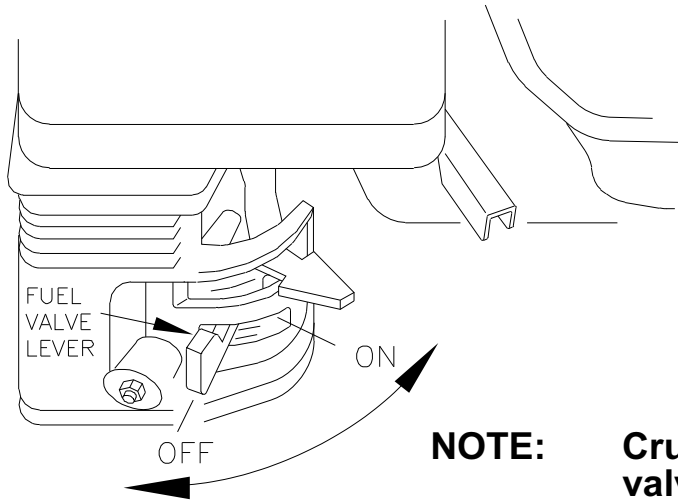
If parked on an unlevel surface with the spout side up, (See *illustration C*) the tube could rapidly swing from one end to the other.

This could be very hazardous for anyone standing in its path. Be very cautious of this situation. This could also cause damage to the tube assembly.





CAUTION



FUEL VALVE

When engine is not in use, leave the fuel valve lever in the OFF position to prevent

- carburetor flooding
- fuel in the oil crank case because of transporting vibrations
- the possibility of fuel leakage.

See engine owner's manual to help you avoid other damage to your engine.

NOTE:

Crust Buster recommends fuel valve be shut off and the motor run completely out of fuel before transporting.

Assembly

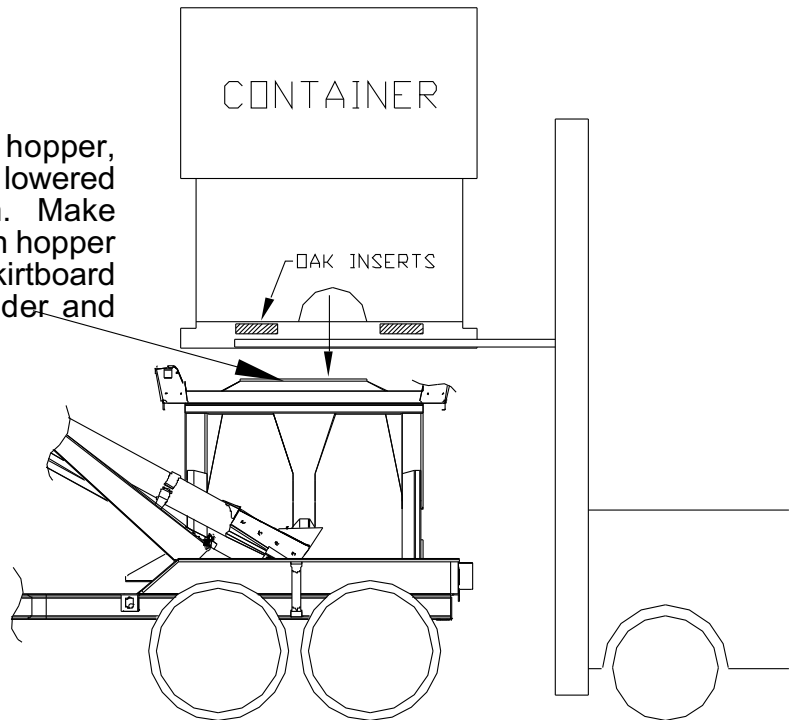


CAUTION

ALWAYS LIFT THE CONTAINER FROM THE BOTTOM. NEVER USE STRAPS OR LIFT BY TYING ANYTHING TO THE SIDES OF THE CONTAINER. REQUIRES MINIMUM 3000 LB. FORKLIFT TO PICK UP FULL CONTAINER. OAK INSERTS, LOCATED IN THE BASE OF THE CONTAINER, REDUCE LIPPAGE ON FORKLIFT FORKS AND PROVIDE STRUCTURAL SUPPORT.

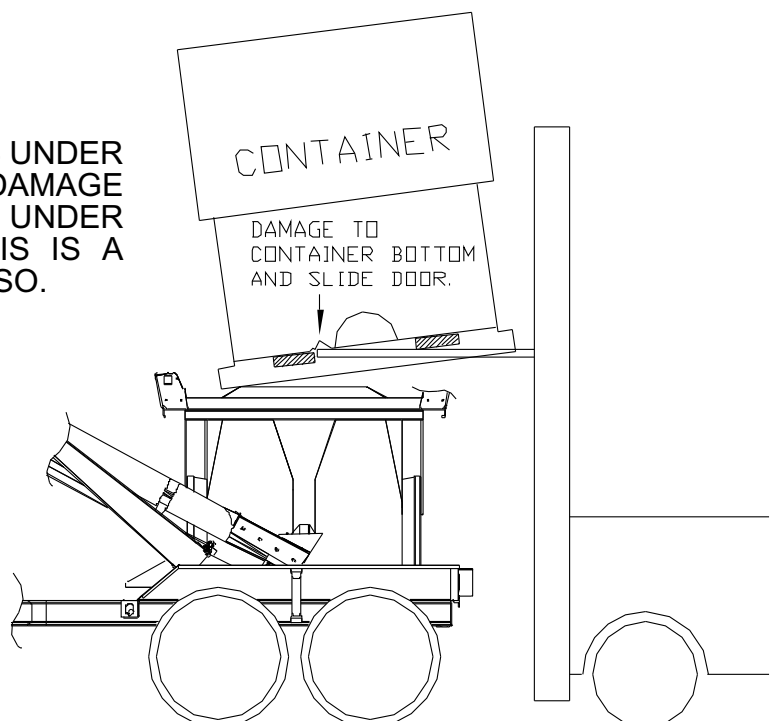
NOTE:

For proper seal to hopper, container should be lowered straight down as shown. Make sure there is no debris on hopper top. Make sure rubber skirtboard deflector is not bent under and preventing a good seal.



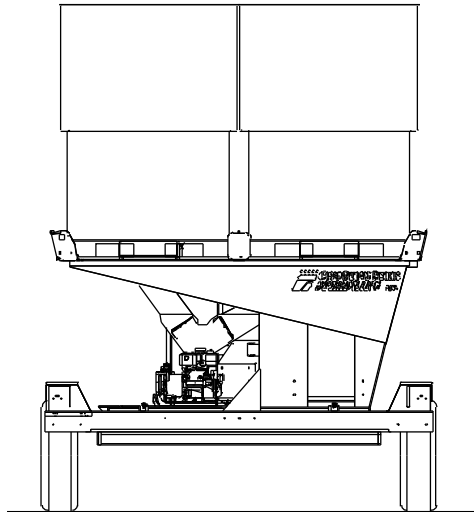
CAUTION

FAILURE TO EXTEND FORKS UNDER OAK INSERTS WILL CAUSE DAMAGE TO SLIDE DOOR ON THE UNDER SIDE OF CONTAINER. THIS IS A DANGEROUS SITUATION ALSO.



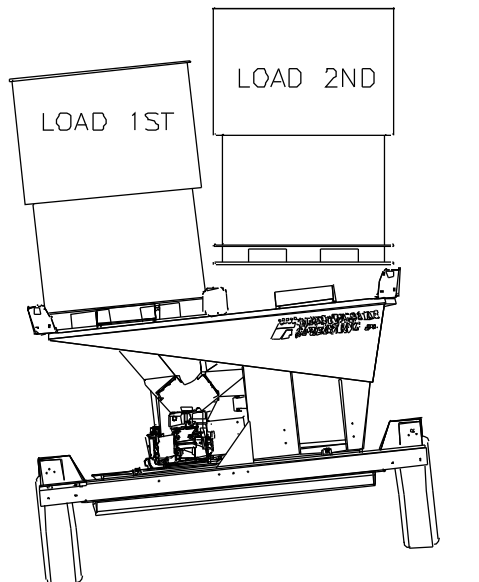
Seed Box Loading

TO LOAD SEED BOXES, THE TOTE SHOULD BE ON LEVEL GROUND OR SURFACE AS SHOWN.



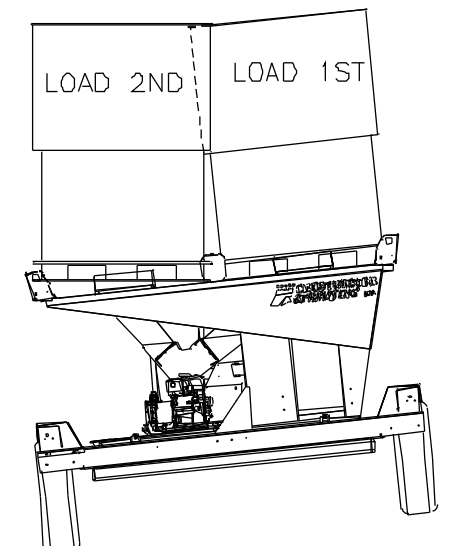
IF IT IS NOT POSSIBLE TO LOAD ON A LEVEL SURFACE, LOAD THE DOWN HILL CONTAINER FIRST, AS SHOWN.

THIS IS THE RIGHT WAY!

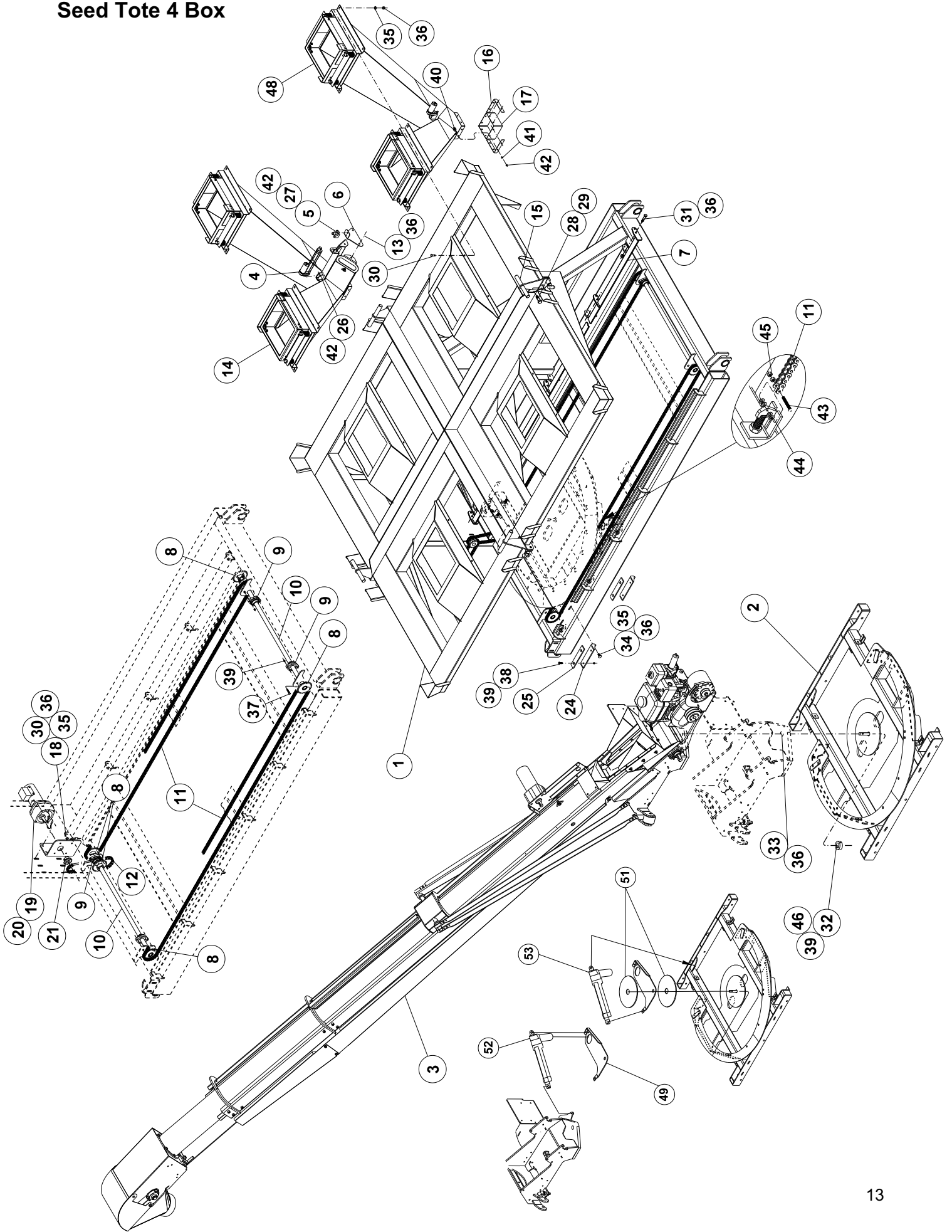


IF YOU LOAD THE UP HILL BOX FIRST, IT WILL BE VERY DIFFICULT TO GET THE SECOND BOX LOADED.

THIS IS THE WRONG WAY!



Seed Tote 4 Box

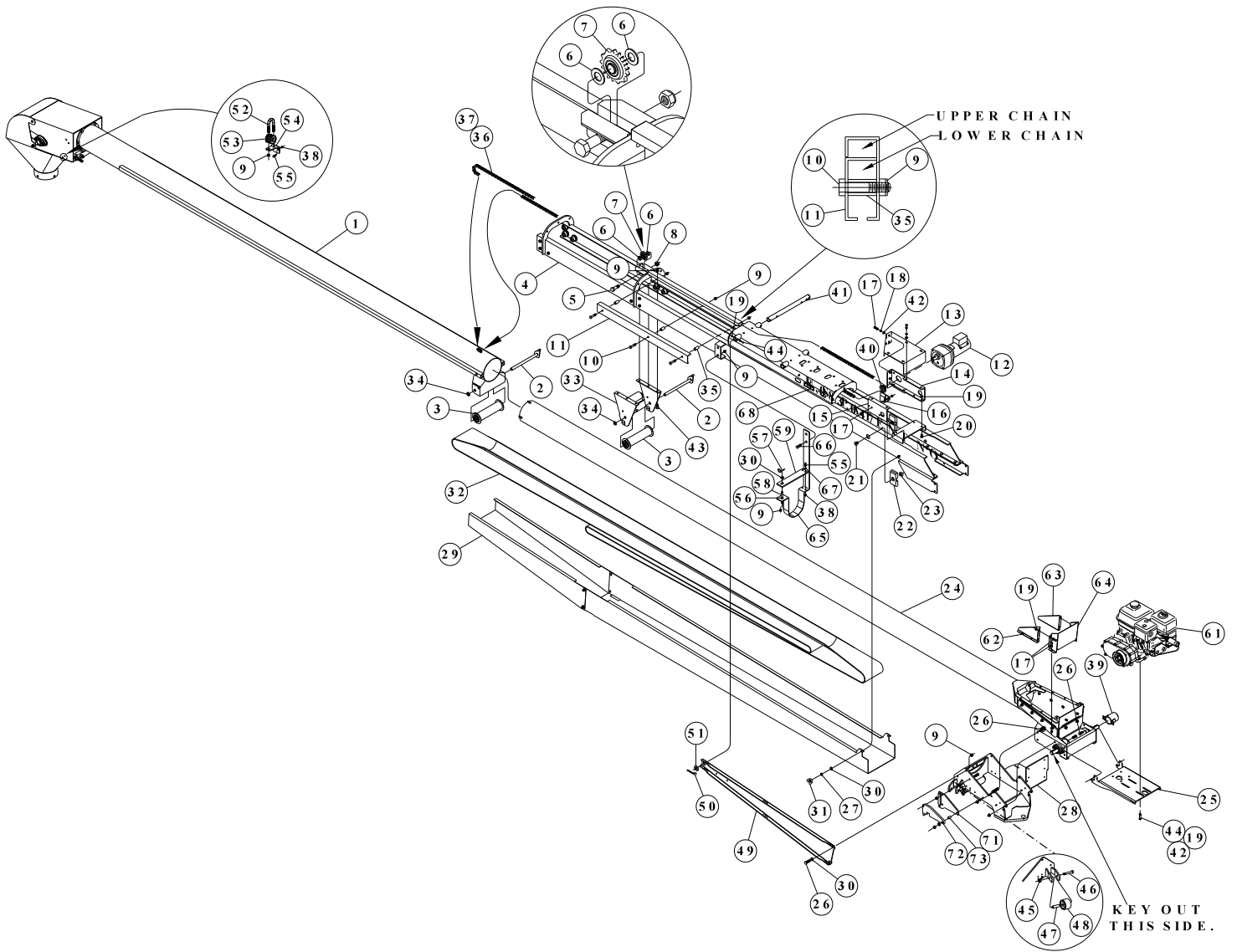


Seed Tote 4 Box

#90926700 4 Box Seed Tote

Item	Qty	Part No.	Description	Item	Qty	Part No.	Description
1	1	82947300	Stand	24	2	82954900	Front Hold Down
2	1	63185300	Conveyor Carriage	25	2	31037500	Nylon Guide
3	1	63186100	Telescoping Conveyor	26	2	331843	HHCS .250 X 1.5
4	2	04396800	Actuator	27	4	331835	Crank Handle
5	2	04398400	Actuator Bracket W/Pin	28	4	01147800	Bolt 1/2" x 1 1/2"
6	2	32473100	Actuator Mount	29	4	331363	Nylock 1/2"
7	1	82951500	Top Track	30	20	01017300	Bolt 3/8" x 1"
8	5	970897	Sprocket #40-24T-1" Hub	31	10	01158500	Bolt 3/8" x 1 1/4"
9	4	03001500	Bearing 1" Flange	32	1	153478	Lock Collar 1" ID
10	2	31017700	Shaft 1" x 36 15/16	33	1	331884	HHCS .375 x 2.5
11		709501	Chain #40 2 pc -343 Links	34	4	335919	Carriage Bolt 3/8" x 1 1/4"
12	1	434209	Chain #40 x 63 Pitches	35	24	330894	Flat Washer 3/8"
13	4	01145200	HHCS .375 X .75	36	39	330837	Nylock 3/8"
14	2	63187900	Hopper Assembly Rear	37	8	01261700	Carriage Bolt 5/16" x 1 1/2"
15	4	82953100	Lock Down	38	4	03683000	Screw 5/16 x 1 Flat Head
16	4	31029200	Socket Plate	39	13	331611	Nylock 5/16"
17	2	04189700	Socket	40	16	337949	Carriage Bolt 1/4" x 3/4"
18	1	32474900	Motor Mount	41	16	02016400	Flat Washer 1/4"
19	1	03881000	Motor 12V	42	22	330522	Nylock 1/4"
20	4	01057900	HHCS .250 X .75	43	4	01165000	Screw #8-32 x 1 1/4
21	1	434225	Sprocket # 40-10T				Round Head
22	1	63394100	Remote Assembly	44	16	02692200	Flat Washer #10
23	1	123448	Tube Rd 2 X 1.010 X .938	45	8	01166800	Hex Nut #8-32
				46	1	02440600	HHCS .313 x 2.25
				47	2	04429700	Cable Hose Carrier Flex
				48	1	63423800	Hopper Assy Front
				49	1	84733500	Rotation Actuator Plate
				50	1	04480000	Mounting Kit
				51	1	04477600	Plastic 9" OD .250" Disk
				52	1	04475000	Actuator Linear-6"-900#
				53	1	04476800	Actuator Linear-9"-900#

Seed Tote 4 Box Telescoping Conveyor

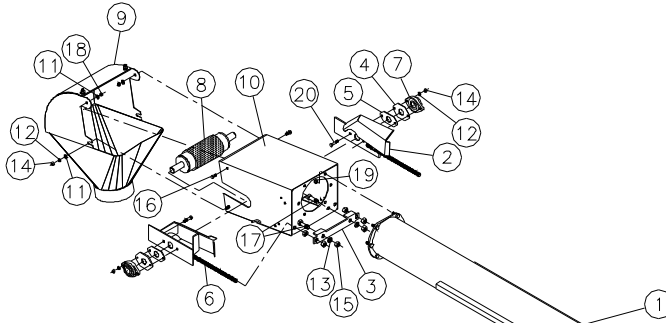


Seed Tote 4 Box Telescoping Conveyor

#63186100 Conveyor Assembly

Item	Qty	Part No.	Description	Item	Qty	Part No.	Description
1	1	62884200	Top Tube	34	2	03869500	Retaining Ring 5/8" Self-Locking
2	2	82638800	Roller Shaft	35	3	20863700	Guard Bushing
3	2	62891700	S-wrap Roller	36		709501	Chain #40 x ft (397 Links)
4	1	62925300	Support Frame	37	3	434084	Chain Connector #40
5	1	01071000	Bolt 5/8" x 2"	38	2	330522	Nylock 1/4"
6	2	330720	Machine Bushing 5/8 x 1 1/8 x 14ga	39	1	82502600	Shaft End Guard
7	1	430603	Idler Sprocket #40-17T 5/8" Bore	40	1	434225	Sprocket #40 -10T
8	1	01572700	Nylock 5/8"	41	1	313718	Shaft 1" x 11 7/8"
9	52	330837	Nylock 3/8"	42	6	330852	Flat Washer 5/16"
10	1	335877	Bolt 3/8" x 1 3/4	43	6	330654	Carriage Bolt 3/8" x 1"
11	1	20982500	Chain Guard	44	4	335448	HHCS .313 X 1.500
12	2	03881000	Motor 12V	45	2	331363	Nylock 1/2"
13	1	972026	Cover	46	2	333310	Carriage Bolt 1/2" x 3 1/2"
14	1	971994	Motor Mount	47	2	30131700	Roller Bushiing
15	1	972034	Motor Mount	48	2	60967700	Roller Assembly
16	1	234641	Prox Switch Mount Plate	49	2	241034	Side Support Plate
17	18	01144500	Bolt 5/16" x 3/4x'	50	2	334037	Cotter Pin 1/4 x 2 1/2"
18	8	330845	Lock Washer 5/16"	51	2	330407	Flat Washer 1"
19	22	331611	Nylock 5/16"	52	1	01034800	U-bolt 3/8 x 1 1/4 x 2 1/4
20	4	334409	Carriage Bolt 5/16" x 3/4	53	1	03651700	Insulator
21	2	03871100	Screw 1/2" x 3/4 Flat Hd	54	1	243642	Insulator Mount Plate
22	2	20972600	Nylon Guide	55	2	01057900	Bolt 1/4" x 3/4"
23	2	332197	Square Nut 1/2"	56	1	330035	Hex Nut 3/8"
24	1	62892500	Bottom Tube	57	1	330928	Klik Pin 3/16"
25	1	32588600	Motor Mount Plate	58	1	16864100	Spout Pin Shaft
26	16	01158500	Bolt 3/8" x 1 1/4"	59	1	614321	Spout Strap
27	2	330043	Lock Washer 3/8"	60	1	31012800	Engine Side Plate
28	1	82950700	Feed Tube Mount	61	1	63046700	Engine Assembly
29	1	62890900	Wind Guard	62	1	31006000	Hopper Side Left
30	7	330894	Flat Washer 3/8"	63	1	31005200	Hopper Side Right
31	2	334847	Wing Nut 3/8"	64	1	31007800	Hopper Back
32	1	62896600	Belt PVG 110 Crescent 8" x 47'-8 3/8"	65	1	244384	3PCFlexible Spout Hanger
33	1	62886700	Upper Roller Bracket	66	2	01017300	HHCS .375 x 1
				67	2	02016400	Flat Wsasher .250
				68	1	04380200	Decal "Patent No"
				69	1	434407	Chain #40 x 53P
				70	1	434092	Chanin #40 Offset Link
				71	1	82972100	Stop Wa
				72	1	31142300	Detent Arm
				73	1	31141500	Tube .625 X .109W X .750

Seed Tote 4 Box Telescoping Conveyor

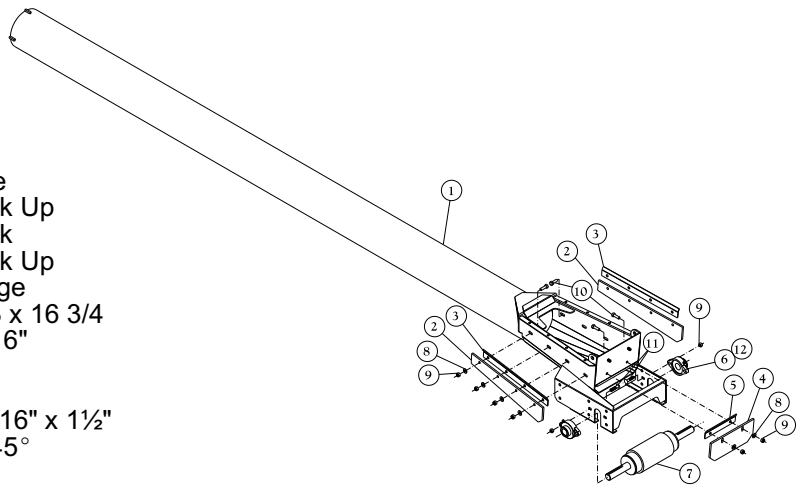


#62884200 Top Tube Assembly

Item	Qty	Part No.	Description
1	1	82616400	Upper Tube
2	1	961714	Take Up Bar Right
3	1	16497400	Take Up Bracket
4	2	151753	Bearing Slide Outer
5	2	151746	Bearing Slide Inner
6	1	961565	Take Up Bar Left
7	2	03001500	Bearing 1" Flange
8	1	62212600	Lagged Roller 3 x 14
9	1	63198600	Spout w/Lining
10	1	82353400	Head Frame
11	4	330852	Flat Washer 5/16"
12	6	330845	Lock Washer 5/16"
13	2	330142	Lock Washer 1/2"
14	6	330811	Hex Nut 5/16"
15	6	330134	Hex Nut 1/2"
16	2	01144500	Bolt 5/16" x 3/4"
17	2	335240	Bolt 1/2" x 1 3/4"
18	2	331611	Nylock 5/16"
19	6	330837	Nylock 3/8"
20	4	335448	Bolt 5/16" x 1 1/2"

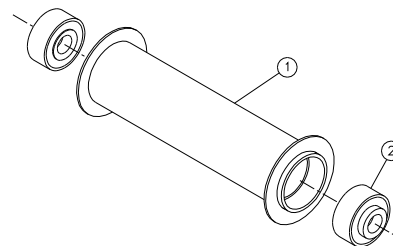
#63387500 Bottom Tube Assembly

Item	Qty	Part No.	Description
1	1	83337600	Bottom Tube
2	2	16431900	Skirt Board Side
3	2	16427700	Skirt Board Back Up
4	1	16432700	Skirt Board Back
5	1	16428500	Skirt Board Back Up
6	2	03001500	Bearing 1" Flange
7	1	62705900	Lagged Roller 3 x 16 3/4
8	10	330852	Flat Washer 5/16"
9	14	331611	Nylock 5/16"
10	10	01010800	Bolt 5/16" x 1"
11	4	01261700	Carriage Bolt 5/16" x 1 1/2"
12	2	01162700	Zerk 1/4"-28 x 45°



#62891700 S-Wrap Roller Assembly

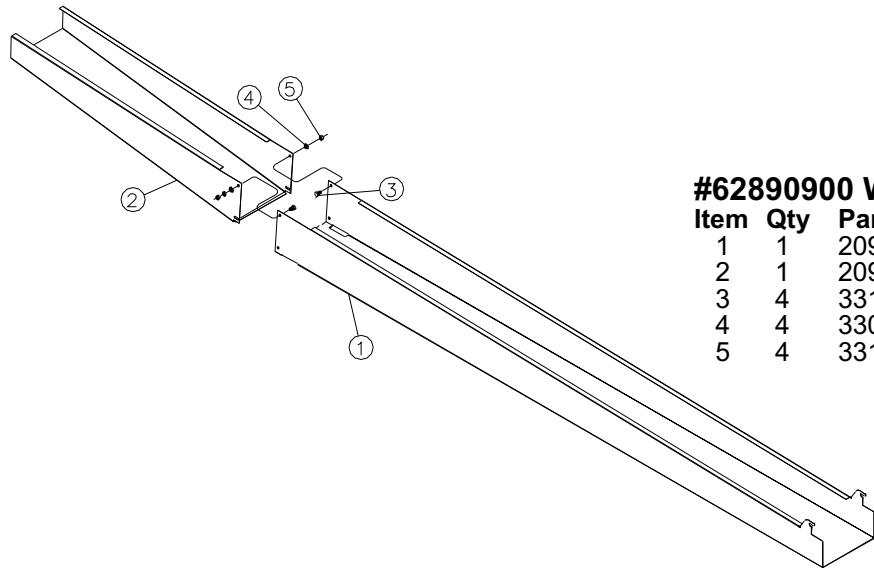
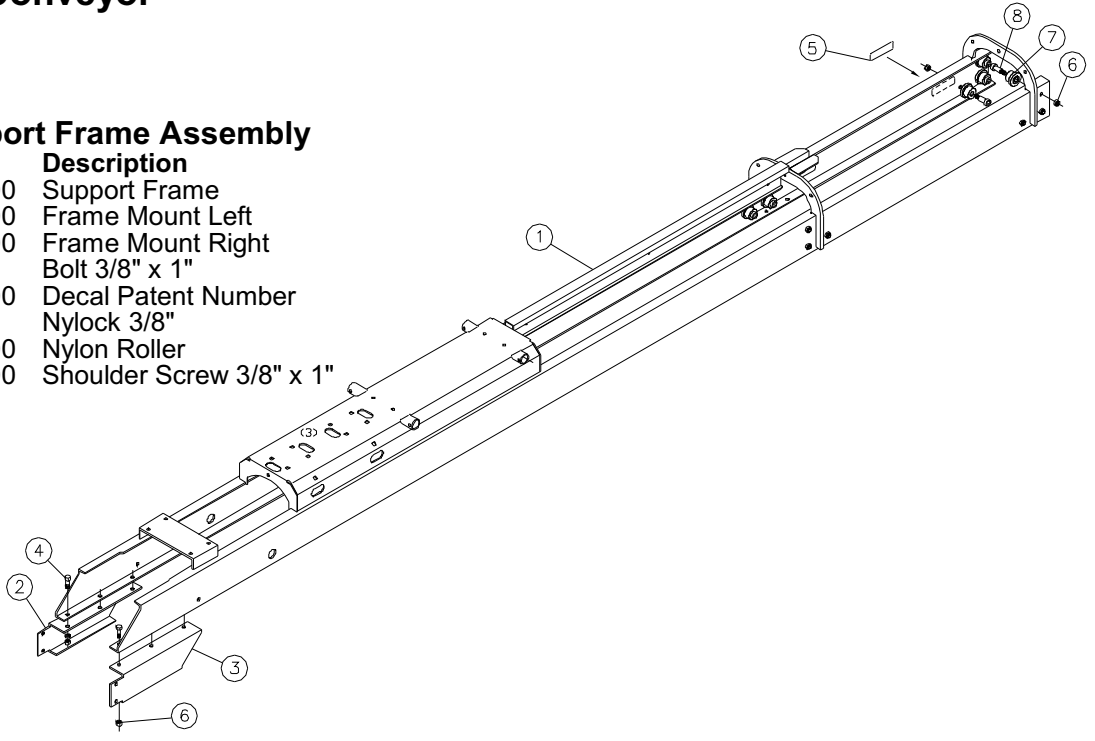
Item	Qty	Part No.	Description
1	1	82639600	S-Wrap Roller
2	2	401042	Bearing



Seed Tote 4 Box Telescoping Conveyor

#62925300 Support Frame Assembly

Item	Qty	Part No.	Description
1	1	82657800	Support Frame
2	1	20945200	Frame Mount Left
3	1	20946000	Frame Mount Right
4	6	330654	Bolt 3/8" x 1"
5	1	04152500	Decal Patent Number
6	18	330837	Nylock 3/8"
7	12	20947800	Nylon Roller
8	12	03866100	Shoulder Screw 3/8" x 1"

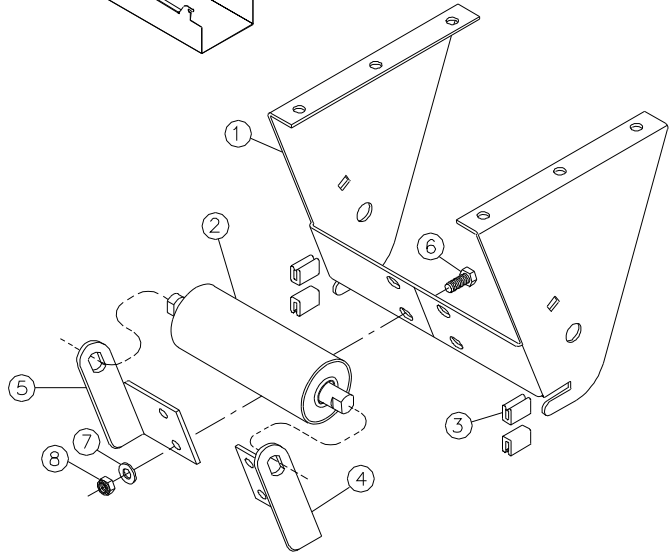


#62890900 Wing Guard Assembly

Item	Qty	Part No.	Description
1	1	20973400	Lower Guard
2	1	20974200	Upper Guard
3	4	331546	Bolt 5/16" x 1/2"
4	4	330852	Flat Washer 5/16"
5	4	331611	Nylock 5/16"

#62886700 Upper Roller Bracket

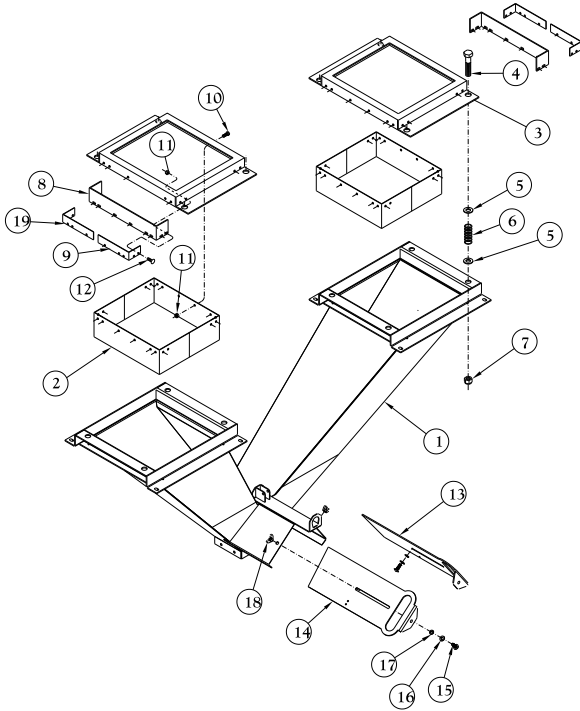
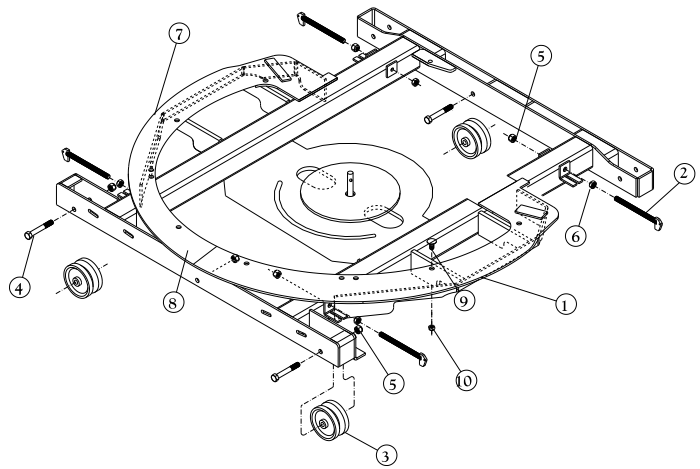
Item	Qty	Part No.	Description
1	1	82633900	Roller Mount
2	1	60190600	Roller Assembly
3	4	20956900	Trim Lock 1/8" x 9/16 x 13/16"
4	1	20953600	Roller Bracket Left
5	1	20959300	Roller Bracket Right
6	4	01144500	Bolt 5/16" x 3/4"
7	4	330852	Flat Washer 5/16"
8	4	331611	Nylock 5/16"



Seed Tote 4 Box

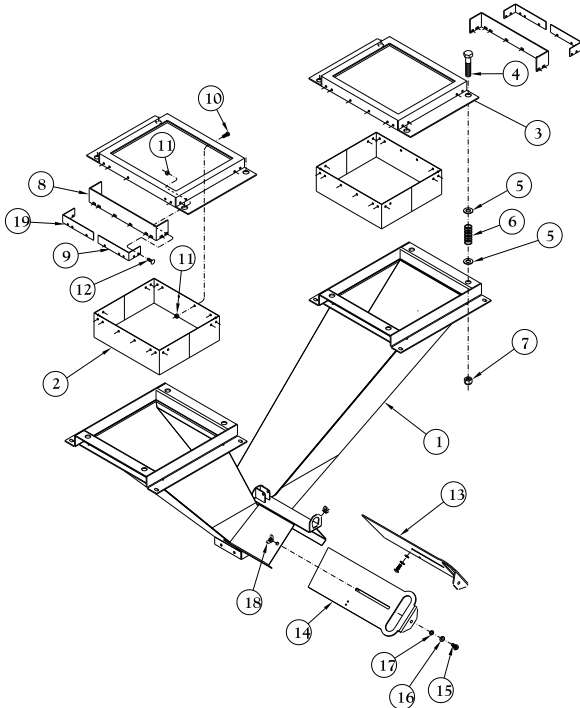
#63185300 Conveyor Carriage Assembly

Item	Qty	Part No.	Description
1	1	82948100	Carriage
2	4	82949900	Take up
3	3	04188900	Roller
4	5	334300	Bolt 1/2" x 3"
5	9	331363	Nylock 1/2"
6	4	332262	Jam Nut 1/2"
7	2	30987200	Plate .250 X 10.5 X 26.696
8	1	30986400	Plate .250 X 12.02X36.549
9	10	01047000	Bolt .313 X 1.00G5
10	10	331611	Nut .313 Hex Nylock



#63187900 Hopper Assembly Front

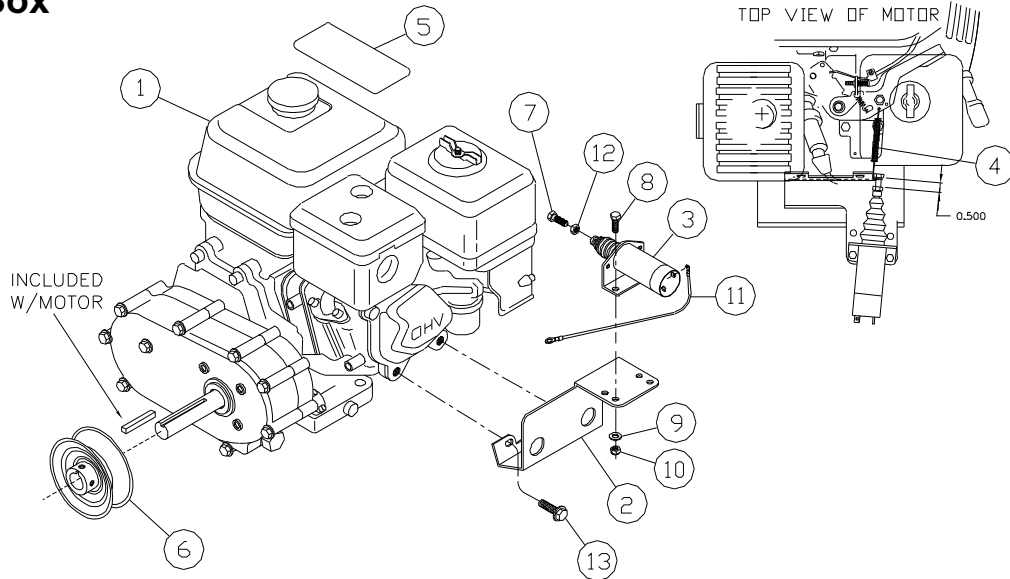
Item	Qty	Part No.	Description
1	1	82952300	Hopper Front
2	2	82105800	Inside Frame
3	2	82107400	Frame Top
4	8	335620	Bolt 5/8" x 3"
5	16	330183	Flat Washer 5/8"
6	8	501031	Spring
7	8	01572700	Nylock 5/8"
8	4	17252800	Deflector Skirt Board
9	4	17251000	Deflector Back Up
10	16	01057900	Bolt 1/4" x 3/4"
11	32	330522	Nylock 1/4"
12	16	337949	Carriage Bolt 1/4" x 3/4"
13	1	31133200	Gate
14	1	31134000	Gate
15	2	01252600	Carriage Bolt 5/16" x 1" Stainless Steel
16	2	02218600	Flat Washer 5/16" Stainless Steel
17	2	02234300	Lock Washer 5/16" Stainless Steel
18	2	335984	Wing Nut 5/16"
19	2	32222000	Deflector Back up



#63423800 Hopper Assembly Rear

Item	Qty	Part No.	Description
1	1	84731900	Hopper Rear
2	2	82105800	Inside Frame
3	2	82107400	Frame Top
4	8	335620	Bolt 5/8" x 3"
5	16	330183	Flat Washer 5/8"
6	8	501031	Spring
7	8	01572700	Nylock 5/8"
8	4	17252800	Deflector Skirt Board
9	4	17251000	Deflector Back Up
10	16	01057900	Bolt 1/4" x 3/4"
11	32	330522	Nylock 1/4"
12	16	337949	Carriage Bolt 1/4" x 3/4"
13	1	31133200	Gate
14	1	31134000	Gate
15	2	01252600	Carriage Bolt 5/16" x 1" Stainless Steel
16	2	02218600	Flat Washer 5/16" Stainless Steel
17	2	02234300	Lock Washer 5/16" Stainless Steel
18	2	335984	Wing Nut 5/16"
19	2	32222000	Deflector Back up

Seed Tote 4 Box



#63046700 Engine Assembly

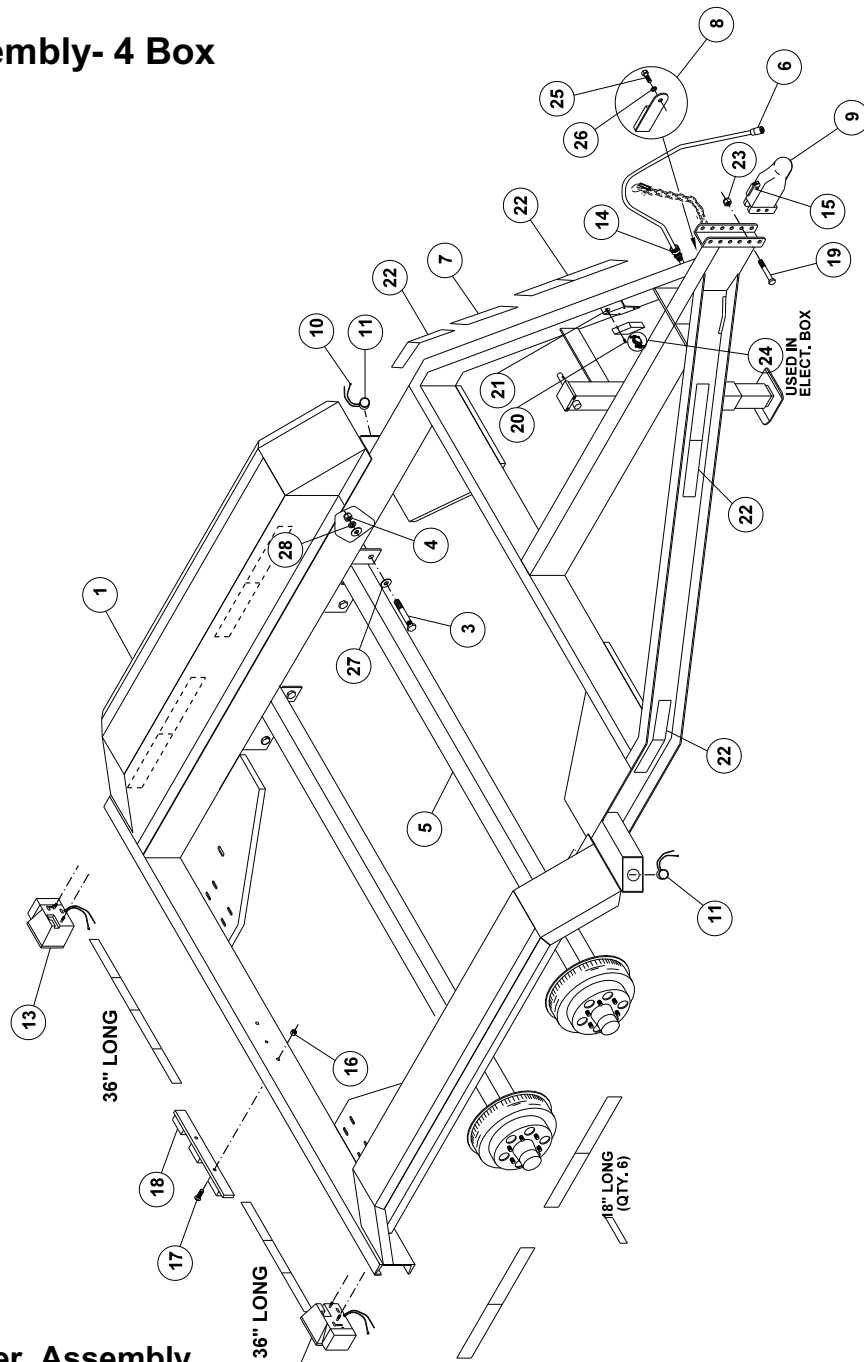
Item	Qty	Part No.	Description
1	1	03750400	Engine 5½" HP
2	1	82820200	Solenoid Motor Mount
3	1	03961000	Solenoid
4	1	04123600	Throttle Spring
5	2	05316500	Decal -Caution Fuel Off
6	1	16612400	Sheave 3½" Cast Iron
7	1	03959400	Bolt 1/4"-28 x 1"
8	2	01057900	Bolt 1/4" x 3/4"
9	2	02016400	Flat Washer 1/4"
10	2	330522	Nylock 1/4"
11	1	62774500	Solenoid Ground Wire
12	1	03960200	Hex Nut 1/4"-28
13	2	339242	Screw M6-1 x 16mm Flange

Remote Assembly

#63394100-Remote Assy

Item	Qty	Part No.	Description
1	1	883397	Remote Enclosure
2	1	04424800	10 Button Remote Kit
3	10	04312500	Screw #10-32 X .625
4	10	03917200	Wire 12ga Red X Ft
5	10	03916400	Wire 12ga White X Ft
6	10	03914900	Wire 12ga Black X Ft
7	45	03912300	Wire Term 16-14ga #8-32 Non-IN
8	3	03906500	Connector M12 Male 3p Panel
9	3	03905700	Connector M12 Female 3p Panel
10	6	03903200	Connector Recp
11	13	03902400	Contact Socket .125 Size 8 50 AMP
12	24	03899200	Screw #6-32 X .50 Phil Pan
13	4	03893500	Screw M3-5 X 8 Phil
14	9	03892700	Relay Allied
15	9	03891900	Relay Socket
16	3	03890100	Terminal Block 6 POS
17	45	03887700	Terminal Conn Relay 14-16ga
18	1	03723400	Switch Toggle SS206S-BG
19	1	03713500	Switch ON-OFF-ON MON 15AMP
20	24	03698800	Nut #6-32 Hex SS
21	24	03697000	Washer #6 Lock SS
22	2	03682200	Switch Boot Seal

Trailer Assembly- 4 Box



#883603 Trailer Assembly

Item	Qty	Part No.	Description	Item	Qty	Part No.	Description
1	1	982173	Trailer Conduit WA 4 Box	15	1	338772	Pin Wire Lock .250 X 2.750 SQ
2				16	2	338533	Nut #12-24 Hex Nylock
3	8	338541	HHCS .625 X 1.500 SAE	17	2	338525	Screw #12-24 Hex Nylock
4	8	332494	Nut .625 Hex SAE	18	1	613372	Red Light Bar-LED
5	2	600205	Axle 8000# Hybrid Electric	19	2	338517	HHCS .625 X 4.500 GR8
6	1	616540	Wire RV Plug 12-706	20	4	331835	HHCS.250 X 1.00- GR5
7	1	609875	Decal Trailer Safety 5 Point	21	4	330522	Nut .250 Hex Nylock
8	1	609677	Breakaway Kit W/Box & Battery	22	.143	03726700	Refelctor Tape 2" X 150' Red/White
9	1	609669	Coupler 20,000#-2.313"	23	2	01572700	Nut .625 Hex Nylock
10				24	2	03394400	Clamp .375 Romex Conn
11	2	613364	Clearance Light Amber LED	25	1	01552900	HHCS .250 X 1.00 Self Drill
12	1	613380	Right Tail Light Red LED	26	1	330550	Washer .250 Lock
13	1	613406	Left Trail Light Red LED W/ Tag light	27	16	330183	Washer .625 Flat
14	1	473470	Strain Relief .625"	28	8	330878	Washer .625 Lock



P.O. Box 526

Spearville, Kansas 67876

(620) 227-7106
